



Service Description Document: CCMS Data Exchange CAL803

COURT RECEIVES COURT RESOURCE
VACATION DATES NOTIFICATION
JUNE 2011



ADMINISTRATIVE OFFICE
OF THE COURTS

INFORMATION SERVICES DIVISION

Judicial Council of California
Administrative Office of the Courts
Information Services Division
455 Golden Gate Avenue
San Francisco, California 94102-3688
415-865-4200
www.courts.ca.gov

Copyright © 2011 by Judicial Council of California/Administrative Office of the Courts. All rights reserved.

Except as permitted under the Copyright Act of 1976 and as otherwise expressly provided herein, no part of this publication may be reproduced in any form or by any means, electronic or mechanical, including the use of information storage and retrieval systems, without permission in writing from the copyright holder. Permission is hereby granted to nonprofit institutions to reproduce and distribute this publication for educational purposes if the copies credit the copyright holder.

Revision History

Version	Date	Author	Description of Changes
1.0.0	June	M. West	First release

Reference Documents

Version	Date	Document Title	Author
9.0	June 2011	ISB and CCMS Data Exchange Overview	Deloitte Consulting
9.0	June 2011	Data Exchange Functional Design Guidelines	Deloitte Consulting
2.0.0	September 2011	Data Exchange Common Technical Requirements	AOC
1.0.0	September 2011	CAL803 Data Exchange Specification	Deloitte Consulting/AOC/SEARCH
9.0	July 2011	CCMS Data Exchange Errors	Deloitte Consulting
1.0	July 2010	Court Policy File Overview	AOC
N/A	September 2011	AOC Codes	AOC/SEARCH
1.0	September 2011	Local Integration Assessment Methodology (LIAM)	AOC
2.0	June 2010	LIAM Light	AOC

Table of Contents

1.0	Executive Summary	1
1.1	Purpose.....	1
1.2	Audience	2
1.3	CCMS Data Exchange Overview	3
1.4	Assumptions.....	3
1.5	Risks.....	3
1.6	Conventions Used in this Document.....	3
1.6.1	Exchange naming convention	3
2.0	Exchange Description	5
2.1	Capabilities	5
2.2	Real World Effects.....	5
2.3	Related Forms and Exchanges	5
2.3.1	Business response exchanges	5
2.3.2	Related exchanges	5
2.3.3	Related forms	5
2.4	Assumptions and Dependencies	6
3.0	Primary and Alternate Information Flows.....	7
3.1	Primary Flow	7
3.2	Alternate Flow	8
3.3	Messages	8
4.0	Exchange Context	10
4.1	Triggering Events.....	10
4.2	Subsequent Events	10
5.0	Data Exchange Errors and Exceptions.....	12
6.0	Additional Business Rules and Processes	14
6.1	Business Rules	14
6.2	Allowable Values	14
6.2.1	AOC code values.....	14
6.2.2	Court configurable elements	15
6.2.3	Indicator element allowable values	15
6.3	Business Processes.....	15
6.4	Data Classification	15
6.4.1	Privacy considerations.....	15
7.0	ISB Message Processing	16
7.1	Routing.....	16
7.2	Message Interactions.....	16
	Appendix A. Acronyms.....	18

List of Figures

Figure 1. Implementation Phases	2
Figure 2. Court Receives Court Resource Vacation Dates Notification Activity Diagram	7

List of Tables

Table 1. Business Rules	14
Table 2. AOC Code Values	15
Table 3. Acronyms	18

1.0 Executive Summary

1.1 Purpose

The purpose of this document is to provide integration partners with descriptive information regarding the context and business processes when preparing to implement data exchanges with the California Court Case Management System (CCMS). This document details the exchange content requirements and related business requirements needed for a trial court to receive court resource vacation dates for an integration partner.

Integration partners most likely to use this data exchange include:

- Law enforcement agencies

This document reflects agency business rules and policies that have a direct impact on the system interactions among court and integration partners. This is a companion to the exchange specifications contained in the exchange eXtensible Markup Language (XML) schemas, Web Service Description Language (WSDL) files, and the “*CCMS Data Exchange Common Technical Requirements*,” and should be reviewed along with those documents when preparing for deployment. The XML schemas, WSDLs, and Common Technical Requirements provide specific technical details regarding message structures and implementation requirements, including infrastructure, security, and deployment information. Collectively, these documents provide all of the information an integration partners requires to send and receive data with CCMS for this exchange.

The information contained here compiles court-specific information from a number of AOC documents and resources, including the “*CCMS Data Exchange Functional Design*,” “*CCMS Core Application Functionality*,” and the “*CCMS Technical Architecture*.” The content of this Service Description Document provides integration partners with a concise, detailed explanation of data exchange content and related business processes, and includes the following topics:

- Exchange description
- Events and conditions
- CCMS business processes and rules
- CCMS data requirements
- Message patterns
- Exceptions, acknowledgements, errors
- Other descriptive information

This document is based on the [Global Justice Reference Architecture’s Service Specifications Guidelines](#)¹.

¹ <http://www.it.ojp.gov/default.aspx?area=nationalInitiatives&page=1015#RefSSPs>

Prior to implementing data exchanges with CCMS, it is strongly advised that each integration partner participate in a readiness assessment prepared by the AOC in partnership with the courts. This assessment, called the “*Local Integration Assessment Methodology (LIAM)*,” consists of four phases that provide integration partners and the courts with necessary information prior to implementation activities. Figure 1 describes this process in more detail.

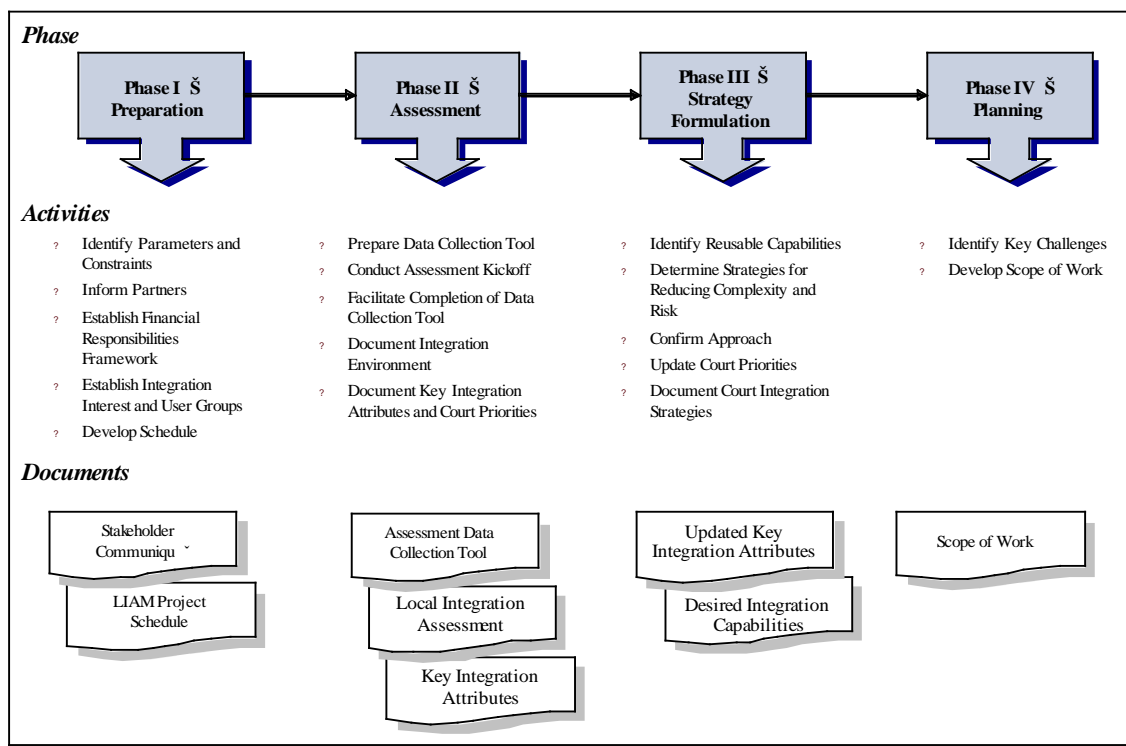


Figure 1. Implementation Phases

Alternatively, an integration partner can choose to participate in the “*LIAM Light*” assessment, which focuses on replacing existing electronic exchanges instead of automating new exchanges.

After CCMS is deployed with the replaced existing exchanges, integration partners may want to use the full LIAM to assess other business processes that can be automated using other exchanges.

1.2 Audience

Audiences for this document are subject matter experts (SMEs) and technical staff, who need to understand how this data exchange works in order to implement it between an integration partner and CCMS. Known audiences include:

- Integration partner CCMS Data Exchange Implementation Team
- CCMS Deployment Team
- AOC Data Integration staff, including business analysts, developers, and architects, etc.

- Integrated Services Backbone (ISB) vendors
- CCMS vendors
- Court CCMS project managers and SMEs

1.3 CCMS Data Exchange Overview

As part of the CCMS project, 121 data exchanges servicing all case types were developed to enable courts and their integration partners to exchange information using CCMS. Sixty-three exchanges are based on data exchange standards established in the [National Information Exchange Model](#)² (NIEM), and 58 exchanges are based on California judicial branch XML schema. It is important to note that each of the 121 exchanges is actually a set of exchanges that includes individual exchanges for Request, Response, and Error Handling. A complete list of CCMS data exchanges is available on the [Integration Partners website](#)³.

1.4 Assumptions

Following is a list of current assumptions:

- Integration partners and courts have completed their LIAM process as a prerequisite to implementing data exchanges.
- Integration partners have a working proficiency with Web services and XML, and a basic understanding and knowledge of the NIEM structure and implementation concepts.

1.5 Risks

To date, there are no risks identified for this exchange.

1.6 Conventions Used in this Document

1.6.1 Exchange naming convention

During the data exchange development process, the AOC adopted a standard naming convention to describe the “action” of the exchange from the court perspective, and applied an alphanumeric categorization for various court functions. Each follows this format:

<Application>-<Interface Number><Interface Name>

² <http://niem.gov/>

³ <http://www.courts.ca.gov/partners/482.htm>

Where:

- *Application* is CCMS
- *Interface Number* consists of code name of functional area (two or three letters (e.g., “DOJ” for Department of Justice-related data exchanges)), and a three-digit number:
 - If the first digit is “8” then CCMS is receiving the data from an integration partner.
 - If the first digit is “9” then CCMS is sending the data to an integration partner.
 - The remaining two digits identify the unique integer ID sequentially assigned to the data exchange.
- *Interface Name* is descriptive name of the data exchange.

Examples:

- CCMS-V4-DOJ802 Receive Disposition Error Report Notification
 - CCMS receives data from an integration partner.
- CCMS-V4-DOJ901 Send Initial, Subsequent Disposition Notification
 - CCMS sends data to an integration partner.

2.0 Exchange Description

This section outlines the requirements and functional design for the CAL803 Receive Resource Vacation Dates Notification data exchange. A trial court will use this NIEM-based data exchange to receive court resource vacation dates for law enforcement agency officers from an integration partner.

On success, there is no functional response to this data exchange. On error, the response to this data exchange is returned to the integration partner containing a rejection indicator and reason.

2.1 Capabilities

This service provides the ability for a trial court (service provider) to **receive** court resource vacation dates for law enforcement agency officers from an integration partner (service consumer).

2.2 Real World Effects

This service provides the ability for an integration partner (service consumer) to **send** resource vacation dates for law enforcement agency officers to a trial court (service provider). An integration partner may send this notification when they wish to notify a trial court of their employees' vacation dates.

2.3 Related Forms and Exchanges

2.3.1 Business response exchanges

All exchanges subject to a court clerk review have corresponding business response exchanges that describe the outcome of the court clerk's review.

- This data exchange is not subject to a clerk review; consequently, there are no business responses for this data exchange.

2.3.2 Related exchanges

Related exchanges identify associated exchanges integration partners may use to modify, update, or complete a correlated business process.

- There are no related exchanges.

2.3.3 Related forms

“Related forms” refers to forms, reports, or other documents currently used by courts and integration partners for the types of documents that may be included in this data exchange. This list is not exhaustive and is not an authoritative list of documents replaced by the data exchange; it is only for informational purposes.

- There are no related forms.

2.4 Assumptions and Dependencies

The data exchange specification package includes a data mapping specification based on the NIEM- and CCMS-specific definitions used in this exchange. Each integration partner is responsible for mapping, or performing data translations if necessary, for all content (including coded values) sent and received using this exchange.

3.0 Primary and Alternate Information Flows

This section provides a basic description of the exchange sequence and flow between an integration partner and CCMS. It explains the primary scenario for successful delivery and receipt of data exchange content and alternate flow of information for error and exception handling scenarios. Additional diagrams and descriptions of information flows are found in the “*Data Exchange Functional Guidelines*.”

3.1 Primary Flow

1. An integration partner sends the court resource vacation dates notification message to the ISB.
2. The ISB receives the notification request, performs schema validations, translates the message to the California judicial branch XML schema standard, and forwards the vacation dates notification message to CCMS.
3. CCMS acknowledges receipt of the message.
4. CCMS performs business validations, per the rules outlined in [Section 6.0, Additional Business Rules and Processes](#). If an error is encountered, CCMS sends the error response to the ISB.
5. The ISB receives the error response message, translates the message to the NIEM schema, and forwards the error response message to the integration partner.
6. The integration partner receives the error response message and takes appropriate action.

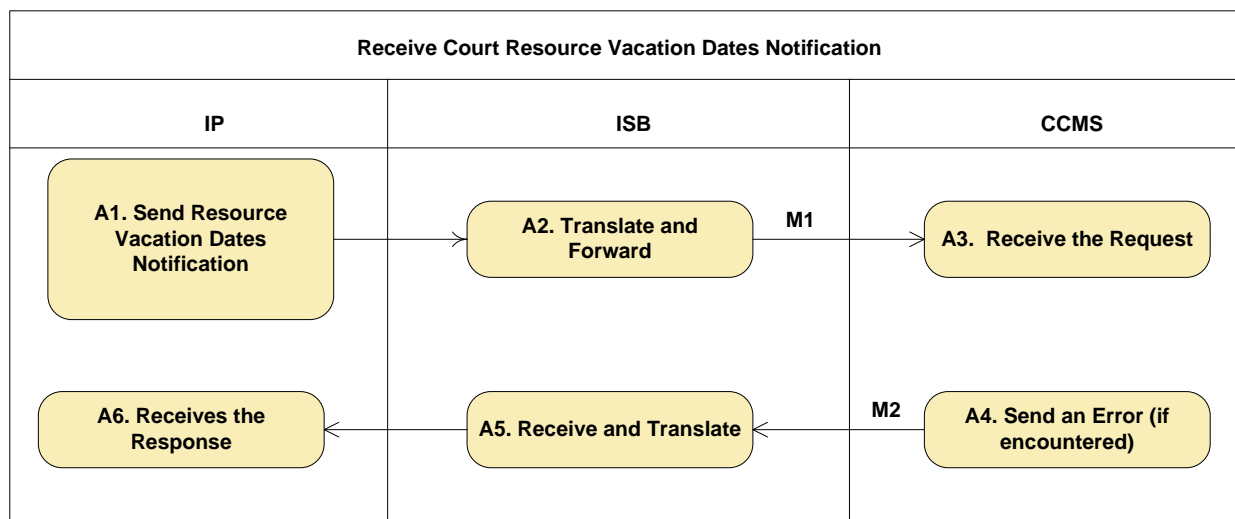


Figure 2. Court Receives Court Resource Vacation Dates Notification Activity Diagram

3.2 Alternate Flow

This exchange includes three possible alternate flows, depending upon the nature of the problem.

- The ISB returned a positive acknowledgement to the source system (integration partner,) and an exception occurs within the ISB, (e.g., schema validation) before the request is forwarded to the target system (CCMS). The ISB handles the exception and sends a response (containing the failure reason) to the source system (integration partner).
- The ISB returned a positive acknowledgement to the source system (integration partner), and an exception occurs when the ISB attempts to forward the request to the target system (CCMS). The ISB handles the exception and sends a response (containing the failure reason) to the source system (integration partner).
- The ISB forwards the request to the target system (CCMS) and receives a negative acknowledgement, (e.g., syntactic data error) from the target system. The ISB handles the exception and sends a response (containing the failure reason) to the source system (integration partner).

3.3 Messages

A data exchange message⁴ is a complete package of information sent between a court and an integration partner. This exchange includes two types of messages:

1. Request message
 - a. The Request message contains the court resource vacation date information, (e.g., court resource CMS ID, court resource name, start date, and end date) sent to a court by an integration partner.
2. Response message
 - a. The Request message contains the court resource vacation date information, (e.g., court resource CMS ID, court resource name, start date, and end date) sent to a court by an integration partner.

⁴ As defined in the Justice Reference Architecture v1.8 February 2010.

4.0 Exchange Context

This section provides integration partners with information regarding the context of the exchange.

4.1 Triggering Events

An integration partner sends a trial court the court resource (law enforcement agency officer only) vacation date information.

- Conditions = None

4.2 Subsequent Events

CCMS stores the court resource vacation dates received from the integration partner.

- Condition = The court resource exists in CCMS

CCMS stores the court resource vacation dates received from the integration partner.

- Condition = The court resource must be a Resource Type: Law Enforcement Agency (LEA) Officer in CCMS

5.0 Data Exchange Errors and Exceptions

“*CCMS Data Exchange Errors*” contains all exchange specific errors that may occur between an integration partner and CCMS; it includes the following three sections that list error codes, names, and descriptions for each error type:

- **Transient and non-transient errors** may occur while the ISB processes messages.
- **Functional errors** may occur while the ISB or CCMS process messages.
- **Transactional errors** may occur while processing a message in CCMS according to the Business Rule validations identified in [Section 6.0, Additional Business Rules and Processes](#).

6.0 Additional Business Rules and Processes

This section contains additional business rules and process requirements for an integration partner to successfully send or receive information from CCMS. The content of this section reflects specific rules that either cannot or are not enforced in the technical specifications that accompany the onboarding documents, specifically the mapping spreadsheets, exchange schemas, and code schemas. Integration partners must rely on this information to produce and consume valid messages exchanged with CCMS.

6.1 Business Rules

Table 1. Business Rules

Referenced Element	Business Rule Description
Add/Remove	All removals must be processed before additions
Holiday Indicator	The Holiday Indicator is used only for “Add” operations and will be ignored for “Remove” operations.
Participant ID	Participant ID should take preference if both Participant ID and First and Last Name are returned by the justice partner. Either a Participant ID or Participant name must be sent
Vacation End Time	Required when holiday indicator is not set
Vacation Start Time	Required when holiday indicator is not set

6.2 Allowable Values

This section provides additional information regarding individual allowable values for elements contained in this data exchange. Essentially, allowable values come in two forms—AOC codes or Boolean types. This section also includes subsections that list the elements by type with specific instructions for each type.

6.2.1 AOC code values

Table 2 contains element names and the corresponding AOC Code Schema Table name.

- The AOC Code Schema contains the actual coded values and descriptions required for each element used in this exchange.
- The AOC Code Schema is provided in the exchange schema file under the “AOC Code” folder.

Integration partners should refer to the AOC Code Schema for all element-allowable values listed in Table 2.

As a reference, the AOC created the “*AOC Codes*” document, which lists all AOC code tables, values, and descriptions in alphabetical order. At the time of this writing, “*AOC Codes*” reflects the current values and should not be used as the authoritative source for validation purposes.

Table 2. AOC Code Values

Element Name	AOC Code Schema Table Name
Error Response	
Error Code	See “CCMS Data Exchange Errors” for a list of errors.
Error Description	See “CCMS Data Exchange Errors” for a list of errors.

6.2.2 Court configurable elements

Each local court has the ability to create, edit, and remove allowable values for some data elements. In practice, many of these values are standard across courts, but integration partners should contact their local court administrator for an authoritative list of the court-specific allowable values. These values will be contained in the Court Policy File, which describes specific court business and operational rules (e.g., hours of operation, code lists, and fee schedules) in a machine-readable format. The Court Policy File for each local court will be developed as part of the CCMS deployment of that court. Integration partners can learn more about the Court Policy File by referring to the “*Court Policy File Overview*.”

- There are no court-configurable data elements.

6.2.3 Indicator element allowable values

This exchange includes numerous “Indicator” elements that provide additional information related to a specific condition or scenario. Following is a list of indicator elements contained in this exchange. The allowable values for each element must be either “true” or “false” or “1” = true or “0” = false. Integration partners should not rely on the exchange mapping spreadsheets for the indicator element allowable values, but rather the exchange schemas contained in the appropriate schema folder.

The following schema is the authoritative source for the indicator allowable values:

- Holiday Indicator

6.3 Business Processes

There are no additional business processes that impact the exchange.

6.4 Data Classification

At the time of this writing, no security classifications or restrictions to the data contained in this exchange have been identified.

6.4.1 Privacy considerations

At the time of this writing, no specific privacy considerations for the content contained in this exchange have been identified.

7.0 ISB Message Processing

7.1 Routing

The ISB performs message routing for this data exchange. Routing rules are based on the content contained in the Common Service Header, which is described in the “*CCMS Data Exchange Common Technical Requirements*.”

- No additional routing rules apply to this exchange.

7.2 Message Interactions

This is an asynchronous exchange; however, all messages sent to the ISB are processed in real time. This means messages received by the ISB are validated, translated to the appropriate format, and routed to the destination immediately.

- This message is retransmitted every 10 minutes, up to three times, before being declared unsuccessful.

Refer to the “*Data Exchange Functional Design Guidelines*” for an additional description of the message interactions with the ISB and CCMS.

Appendix A. Acronyms

Table 3. Acronyms

Acronym	Name
ACCMS	Appellate Court Case Management System
AOC	Administrative Office of the Courts
CCMS	California Case Management System
CCTC	California Courts Technology Center
CEB	Common Element Block
DI	data integration
F&F	Fees and Fines
FTA	Failure To Appear
IP	integration partner
ISB	Integrated Services Backbone
LIAM	Local Integration Assessment Methodology
NIEM	National Information Exchange Model
OWSM	Oracle Web Services Management
RRA	request/reply-asynchronous
RRS	request/reply-synchronous
SDD	Service Description Document
SLA	service level agreement
SME	subject matter experts
URL	Universal Resource Locator
WSDL	Web Services Description Language
XML	eXtensible Markup Language

