



Service Description Document: CCMS Data Exchange DSP915

COURT SENDS TRUE FINDING ON
JUVENILE 602 CASE ORDER
NOTIFICATION
JUNE 2011



ADMINISTRATIVE OFFICE
OF THE COURTS

INFORMATION SERVICES DIVISION

Judicial Council of California
Administrative Office of the Courts
Information Services Division
455 Golden Gate Avenue
San Francisco, California 94102-3688
415-865-4200
www.courts.ca.gov

Copyright © 2011 by Judicial Council of California/Administrative Office of the Courts. All rights reserved.

Except as permitted under the Copyright Act of 1976 and as otherwise expressly provided herein, no part of this publication may be reproduced in any form or by any means, electronic or mechanical, including the use of information storage and retrieval systems, without permission in writing from the copyright holder. Permission is hereby granted to nonprofit institutions to reproduce and distribute this publication for educational purposes if the copies credit the copyright holder.

Revision History

Version	Date	Author	Description of Changes
1.0.0	June 2011	M. West	First release

Reference Documents

Version	Date	Document Title	Author
9.0	June 2011	Executive Summary	Deloitte Consulting
9.0	June 2011	ISB and CCMS Data Exchange Overview	Deloitte Consulting
9.0	June 2011	Data Exchange Functional Design Guidelines	Deloitte Consulting
2.0.0	September 2011	Data Exchange Common Technical Requirements	AOC
1.0.0	September 2011	DSP915 Data Exchange Specification	Deloitte Consulting/AOC/SEARCH
9.0	July 2011	CCMS Data Exchange Errors	Deloitte Consulting
1.0	July 2010	Court Policy File Overview	AOC
N/A	September 2011	AOC Codes	AOC/SEARCH
1.0	September 2011	Local Integration Assessment Methodology (LIAM)	AOC
2.0	June 2010	LIAM Light	AOC

Table of Contents

1.0	Executive Summary	1
1.1	Purpose	1
1.2	Audience.....	2
1.3	CCMS Data Exchange Overview	3
1.4	Assumptions	3
1.5	Risks	3
1.6	Conventions Used in this Document	3
1.6.1	Exchange naming convention	3
2.0	Exchange Description	5
2.1	Capabilities	5
2.2	Real World Effects	5
2.3	Related Forms and Exchanges	5
2.3.1	Business response exchanges	5
2.3.2	Related exchanges	5
2.3.3	Related forms	5
2.4	Assumptions and Dependencies	9
3.0	Primary and Alternate Information Flows.....	11
3.1	Primary Flow	11
3.2	Alternate Flow	11
3.3	Messages	12
4.0	Exchange Context.....	13
4.1	Triggering Events	13
4.2	Subsequent Events.....	15
5.0	Data Exchange Errors and Exceptions	17
6.0	Additional Business Rules and Processes	19
6.1	Business Rules.....	19
6.2	Allowable Values	20
6.2.1	AOC code values	20
6.2.2	AOC code values	20
6.2.3	Court configurable elements	22
6.2.4	Indicator element allowable values	22
6.3	Business Processes	24
6.4	Data Classification	24
6.4.1	Privacy considerations.....	24
7.0	ISB Message Processing	25
7.1	Routing	25
7.2	Message Interactions	25
	Appendix A. Acronyms	27

List of Figures

Figure 1.	Implementation Phases	2
Figure 2.	Court Sends True Finding on Juvenile 602 Case Order Notification Activity Diagram.....	11

List of Tables

Table 1. Business Rules	19
Table 2. AOC Code Values	21
Table 3. Acronyms	27

1.0 Executive Summary

1.1 Purpose

The purpose of this document is to provide integration partners with descriptive information regarding the context and business processes when preparing to implement data exchanges with the California Court Case Management System (CCMS). This document details the exchange content requirements and related business requirements needed for the trial court to send an order of true finding on a juvenile delinquency case to a law enforcement agency/county sheriff when this action has been ordered by the trial court.

Integration partners most likely to use this data exchange include:

- Law enforcement agency/sheriff

This document reflects agency business rules and policies that have a direct impact on the system interactions among court and integration partners. This is a companion to the exchange specifications, contained in the exchange Extensible Markup Language (XML) schemas and Web Service Description Language (WSDL) files, and the “*CCMS Data Exchange: Common Technical Requirements*,” and should be reviewed along with these documents when preparing for deployment. The schemas, WSDLs, and “*Common Technical Requirements*” documentation provide specific technical details regarding message structures and implementation requirements, including infrastructure, security, and deployment information. Collectively, these documents provide all information required for an integration partner to send and receive data for this exchange with CCMS.

The information contained here compiles court-specific information from a number of AOC documents and resources, including the “*CCMS Data Exchange Functional Design*,” “*CCMS Core Application Functionality*,” and the “*CCMS Technical Architecture*.” The content in this document provides integration partners with a concise, detailed explanation of data exchange content and related business processes, and includes the following topics:

- Exchange description
- Events and conditions
- CCMS business processes and rules
- CCMS data requirements
- Message patterns
- Exceptions, acknowledgements, errors
- Other descriptive information

This Service Description Document is based on the Global Justice Reference Architecture’s Service Specifications Guidelines. More information about this initiative is available at <http://www.it.ojp.gov/default.aspx?area=nationalInitiatives&page=1015#RefSSPs>.

Prior to implementing data exchanges with CCMS, it is strongly advised that each integration partner participate in a readiness assessment prepared by the AOC in partnership with the courts. This assessment, called the “Local Integration Assessment Methodology (LIAM),” consists of four phases to provide both integration partners and the courts with necessary information prior to implementation activities. Figure 1 describes this process in more detail.

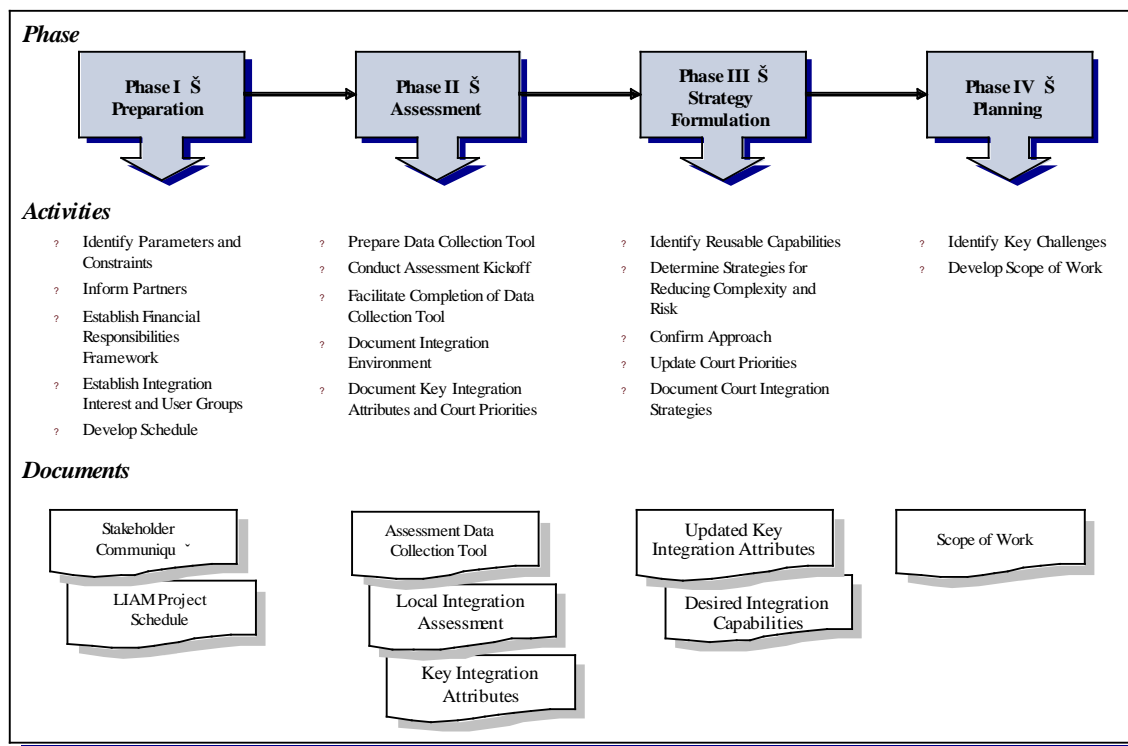


Figure 1. Implementation Phases

Alternatively, an integration partner can choose to participate in the “*LIAM Light*” assessment, which focuses on replacing existing electronic exchanges instead of automating new exchanges.

After CCMS is deployed with the replaced existing exchanges, integration partners may want to use the full LIAM to assess other business processes that can be automated using other exchanges.

1.2 Audience

Audiences for this document are subject matter experts (SMEs) and technical staff, who need to understand how this data exchange works in order to implement it between an integration partner and CCMS. Known audiences include:

- Integration partner CCMS Data Exchange Implementation Team
- CCMS Deployment Team
- AOC Data Integration staff, including business analysts, developers, and architects, etc.

- Integrated Services Backbone (ISB) vendors
- CCMS vendors
- Court CCMS project managers and SMEs

1.3 CCMS Data Exchange Overview

As part of the CCMS project, 121 data exchanges servicing all case types were developed to enable courts and their integration partners to exchange information using CCMS. Sixty-three exchanges are based on data exchange standards established in the [National Information Exchange Model](#)¹ (NIEM), and 58 exchanges are based on California judicial branch XML schema. It is important to note that each of the 121 exchanges is actually a set of exchanges that includes individual exchanges for Request, Response, and Error Handling. A complete list of CCMS data exchanges is available on the [Integration Partners website](#)².

1.4 Assumptions

Following is a list of current assumptions:

- Integration partners and courts have completed their LIAM process as a prerequisite to implementing data exchanges.
- Integration partners have a working proficiency with Web services and XML, and a basic understanding and knowledge of the NIEM structure and implementation concepts.

1.5 Risks

To date, there are no risks identified for this exchange.

1.6 Conventions Used in this Document

1.6.1 Exchange naming convention

During the data exchange development process, the AOC adopted a standard naming convention to describe the “action” of the exchange from the court perspective, and applied an alphanumeric categorization for various court functions. Each follows this format:

<Application>-<Interface Number><Interface Name>

Where:

- *Application* is CCMS

¹ <http://niem.gov/>

² <http://www.courts.ca.gov/partners/integration.htm>

- *Interface Number* consists of code name of functional area (two or three letters (e.g., “DOJ” for Department of Justice-related data exchanges)), and a three-digit number:
 - If the first digit is “8” then CCMS is receiving the data from an integration partner.
 - If the first digit is “9” then CCMS is sending the data to an integration partner.
 - The remaining two digits identify the unique integer ID sequentially assigned to the data exchange.
- *Interface Name* is descriptive name of the data exchange.

Examples:

- CCMS-V4-DOJ802 Receive Disposition Error Report Notification
 - CCMS receives data from an integration partner.
- CCMS-V4-DOJ901 Send Initial, Subsequent Disposition Notification
 - CCMS sends data to an integration partner.

2.0 Exchange Description

This section outlines the requirements and functional design for the DSP915 Send True Finding on Juvenile 602 Case Order Notification data exchange. A trial court uses this NIEM-based data exchange to send an order of true finding on a juvenile delinquency case to a law enforcement agency/county sheriff when this action has been ordered by a trial court.

This data exchange does not include a functional success response message, but integration partners may return an error response message to the court if an error is encountered.

2.1 Capabilities

This service provides the ability for a trial court (service consumer) to **send** an order of true finding on a juvenile delinquency case to a law enforcement agency/county sheriff (service provider) when this action has been ordered by a trial court.

2.2 Real World Effects

This service provides the ability for a law enforcement agency/county sheriff (service provider) to **receive** an order of true finding on a juvenile delinquency case from a trial court (service consumer) when this action has been ordered by the court.

2.3 Related Forms and Exchanges

2.3.1 Business response exchanges

All exchanges subject to a court clerk review have corresponding ‘business response’ exchanges that describe the outcome of the court clerk’s review.

- This data exchange is not subject to a court clerk review; consequently there are no corresponding business response exchanges.

2.3.2 Related exchanges

The related exchanges identify associated exchanges integration partners may use to modify, update, or complete a correlated business process.

- There are no related exchanges.

2.3.3 Related forms

“Related forms” refers to forms, reports, or other documents currently used by courts and integration partners for the types of documents that may be included in this data exchange. This list is not exhaustive and is not an authoritative list of documents replaced by the data exchange; it is only for informational purposes. The following forms are related to this exchange:

Condition – Counseling Ordered

- JV-624 Terms and Conditions

Condition – Community Service

- JV-624 Terms and Conditions
- JV-622 Informal Probation Agreement

Condition – Driver License Limitation

- JV-624 Terms and Conditions
- JV-665 Disposition – Juvenile Delinquency

Condition – Drug Use

- JV-624 Terms and Conditions

Condition – Vehicle Limitations

- JV-624 Terms and Conditions
- JV-665 Disposition – Juvenile Delinquency

Condition – Gang Membership/Association

- JV-624 Terms and Conditions

Condition – Gang Clothing

- JV-624 Terms and Conditions

Condition – Gang related tattoos/piercings

- JV-624 Terms and Conditions

Condition – Graffiti materials

- JV-624 Terms and Conditions

Condition – Graffiti related activities

- JV-624 Terms and Conditions

Condition – Graffiti Community Service

- JV-624 Terms and Conditions

Condition – Enter Condition (1)

- JV-624 Terms and Conditions

Condition – Enter Condition (2)

- JV-624 Terms and Conditions

Disposition – Probation / Wardship Ordered

- JV-624 Terms and Conditions
- JV-665 Disposition – Juvenile Delinquency
- JV-550 Juvenile Court Transfers Orders

Condition – DNA Sampling

- JV-624 Terms and Conditions

Condition – Minor Ordered to Home Supervision / Electronic Monitoring Program

- JV-624 Terms and Conditions

Advisement – Advised of Appeal rights

- JV-320 Orders Under Welfare and Institution Code Sections 366.26, 727.3, 727.31
- JV-665 Disposition – Juvenile Delinquency

Advisement – Advised of Appeal rights

- JV-320 Orders Under Welfare and Institution Code Sections 366.26, 727.3, 727.31
Case – Notice provided as required by law
- JV-320 Orders Under Welfare and Institution Code Sections 366.26, 727.3, 727.31
- JV-665 Disposition – Juvenile Delinquency

Case – Restitution Ordered to the Victim

- JV-790 Order for Restitution and Abstract of Judgment
- JV-665 Disposition – Juvenile Delinquency

Condition – Fine (730.5 W&I)

- JV-732 Commitment to the California Department of Corrections and Rehabilitation
Division of Juvenile Justice
- JV-665 Disposition – Juvenile Delinquency

Condition – Fine (730.6 W&I)

- JV-732 Commitment to the California Department of Corrections and Rehabilitation
Division of Juvenile Justice
- JV-665 Disposition – Juvenile Delinquency

Disposition – Count Offense Level

- JV-665 Disposition – Juvenile Delinquency

Disposition – Disposition Hearing - Placement in Foster Care

- JV-665 Disposition – Juvenile Delinquency

Disposition – Disposition Hearing - Risk of entering foster care

- JV-665 Disposition – Juvenile Delinquency

Disposition – Enter Dismissal on Petition - Delinquency

- JV-665 Disposition – Juvenile Delinquency

Disposition – Previously Sustained Petitions

- JV-665 Disposition – Juvenile Delinquency

Disposition – Modify Probation / Wardship Ordered

- JV-665 Disposition – Juvenile Delinquency

Finding – Judicial Notice of All Prior Findings

- JV-320 Orders Under Welfare and Institution Code Sections 366.26, 727.3, 727.31
- JV-665 Disposition – Juvenile Delinquency

Finding – Maximum confinement time for offenses

- JV-665 Disposition – Juvenile Delinquency

Finding – Out-of-state Placement - Delinquency

- JV-665 Disposition – Juvenile Delinquency

Finding – Pending Placement

- JV-665 Disposition – Juvenile Delinquency

Finding – Physical Custody Removed From Parent / Guardian

- JV-665 Disposition – Juvenile Delinquency
- Finding – Probation Officer to Provide Reunification*
 - JV-665 Disposition – Juvenile Delinquency
- Finding – Reasonable Efforts - Removal*
 - JV-665 Disposition – Juvenile Delinquency
- Finding – Reunification Services Do Not Need to be Provided*
 - JV-665 Disposition – Juvenile Delinquency
- Miscellaneous – All Prior Orders Not in Conflict Remain in Effect*
 - JV-665 Disposition – Juvenile Delinquency
 - JV-320 Orders Under Welfare and Institution Code Sections 366.26, 727.3, 727.31
- Miscellaneous – Attachment - Disposition*
 - JV-665 Disposition – Juvenile Delinquency
- Miscellaneous – Judicial Notice of Social Study/Other Relevant Evidence*
 - JV-665 Disposition – Juvenile Delinquency
- Order – Commitment Ordered*
 - JV-665 Disposition – Juvenile Delinquency
- Order – Commitment to DJJ*
 - JV-665 Disposition – Juvenile Delinquency
 - JV-732 Commitment to the California Department of Corrections and Rehabilitation Division of Juvenile Justice
- Order – Commitment to Juvenile Hall*
 - JV-665 Disposition – Juvenile Delinquency
- Order – County of Residence*
 - JV-665 Disposition – Juvenile Delinquency
- Order – Other Order 1 - Disposition*
 - JV-665 Disposition – Juvenile Delinquency
- Order – Other Order 2 - Disposition*
 - JV-665 Disposition – Juvenile Delinquency
- Order – Update Commitment*
 - JV-665 Disposition – Juvenile Delinquency
- Participant – Child to Reside in the Custody of Legal Guardian*
 - JV-665 Disposition – Juvenile Delinquency
- Participant – Child to reside in the custody of Parent 1*
 - JV-665 Disposition – Juvenile Delinquency
- Participant – Child to reside in the custody of Parent 2*
 - JV-665 Disposition – Juvenile Delinquency
- Participant – Custody Terms*
 - JV-665 Disposition – Juvenile Delinquency

Participant – Terms Attachment

- JV-665 Disposition – Juvenile Delinquency

Transfer – Transfer for Disposition / Other Proceedings

- JV-665 Disposition – Juvenile Delinquency

2.4 Assumptions and Dependencies

The data exchange specification package includes a data mapping specification based on the NIEM- and CCMS-specific definitions used in this exchange. Each law enforcement agency is responsible for mapping, or performing data translations if necessary, for all content (including coded values) sent and received through this exchange.

3.0 Primary and Alternate Information Flows

This section provides a basic description of the exchange sequence and flow between an integration partner and CCMS; it explains the primary scenario for successful delivery and receipt of data exchange content, and the “alternate” flow of information for error and exception handling scenarios. Additional diagrams and descriptions of information flows are found in the *“Data Exchange Functional Design Guidelines.”*

3.1 Primary Flow

1. CCMS sends an order of true finding on case information to the ISB.
2. The ISB receives the order, performs schema validation, facilitates data mapping to the California judicial branch XML schema standard and forwards the notification to the integration partner.
3. The integration partner acknowledges receipt the message.
4. The integration partner performs business validations, per the rules outlined in [Section 6.0, Additional Business Rules and Processes](#). If encountered, the integration partner sends the error response to the ISB.
5. The ISB receives the error response message, performs schema validation, translates to the NIEM standard and forwards the response to CCMS.
6. CCMS receives the response.

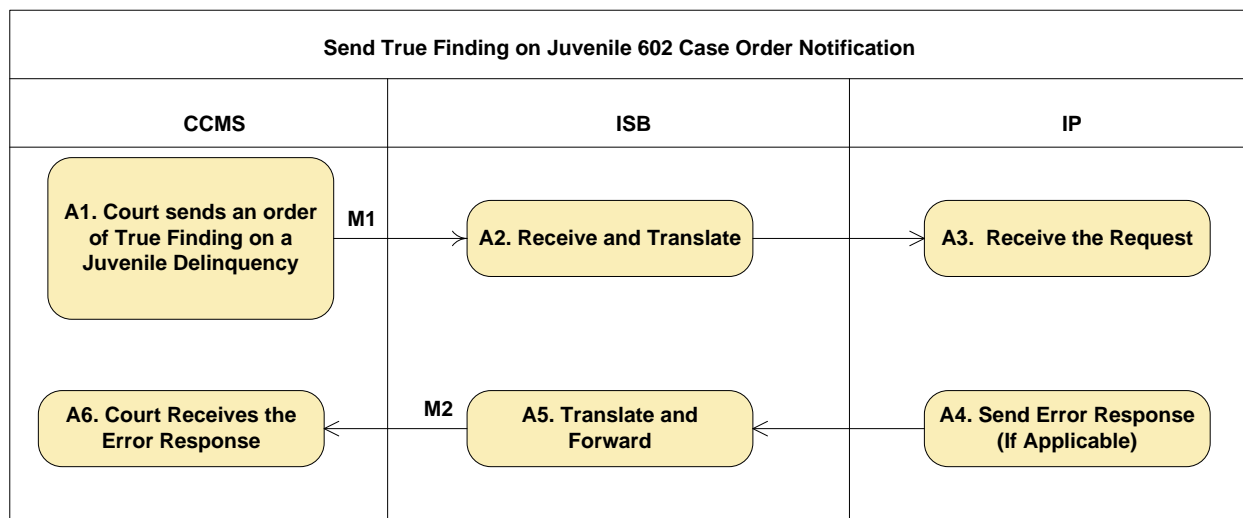


Figure 2. Court Sends True Finding on Juvenile 602 Case Order Notification Activity Diagram

3.2 Alternate Flow

This exchange includes three possible alternate flows, depending upon the nature of the problem.

- The ISB returned a positive acknowledgement to the source system (CCMS) and an exception occurs within the ISB, (e.g., schema validation) before the request is

forwarded to the target system (county sheriff). The ISB handles the exception and sends a response (containing the failure reason) to the source system (CCMS).

- The ISB returned a positive acknowledgement to the source system (CCMS system), and an exception occurs when the ISB attempts to forward the request to the target system (county sheriff). The ISB handles the exception and sends a response (containing the failure reason) to the source system (CCMS).
- The ISB forwards the request to the target system (county sheriff) and receives a negative acknowledgement, (e.g., syntactic data error) from the target system. The ISB handles the exception and sends a response (containing the failure reason) to the source system (CCMS system).

3.3 Messages

A data exchange message³ is a complete package of information sent between the courts and an integration partner. This exchange includes two types of messages.

1. Request message
 - a. The Request message contains the true finding information notification, (e.g., allegations and finding) sent from the court to the integration partner.
2. Response messages
 - a. The Error Response message contains error and error description information indicating the true finding notification message was not successful and corrective action is required.

³ As defined in the Justice Reference Architecture v1.8 February 2010.

4.0 Exchange Context

This section provides integration partners with specific information regarding the context of the exchange.

4.1 Triggering Events

The trial court sends a true finding (counts or allegations information) notification on a Juvenile 602 case by processing one of the following:

- *Disposition – Enter Finding on Counts*
- *Disposition – Enter Finding on Allegation*
- *Condition – Counseling Ordered*
- *Condition – Community Service*
- *Condition – Driver License Limitation*
- *Condition – Drug Use*
- *Condition – Vehicle Limitations*
- *Condition – Gang Membership/Association*
- *Condition – Gang Clothing*
- *Condition – Gang related tattoos/piercings*
- *Condition – Graffiti materials*
- *Condition – Graffiti related activities*
- *Condition – Graffiti Community Service*
- *Condition – Enter Condition (1)*
- *Condition – Enter Condition (2)*
- *Condition – Enter Condition (3)*
- *Condition – Enter Condition (4)*
- *Condition – Attend School Regularly*
- *Condition – Seek and Maintain Employment*
- *Condition – Drug Use – Specify*
- *Condition – Weapons*
- *Condition – Campus Restrictions*
- *Condition – Submit to Search*
- *Condition – No Contact/Association*
- *Condition – Submit to Chemical Testing*
- *Condition – Regarding Victim/Letter of Apology*

- *Condition – Regarding Victim*
- *Condition – Curfew*
- *Condition – DNA Sampling*
- *Disposition – Probation/Wardship Ordered*
- *Order – Minor Ordered to Home Supervision/Electronic Monitoring Program*
- *Advisement – Advised of Appeal Rights*
- *Case – Notice Provided as Required by Law*
- *Case – Restitution Ordered to the Victim*
- *Condition – Fine (730.5 W&I)*
- *Condition – Fine (730.6 W&I)*
- *Disposition – Count Offense Level*
- *Disposition – Disposition Hearing - Placement in Foster Care*
- *Disposition – Disposition Hearing - Risk of Entering Foster Care*
- *Disposition – Enter Dismissal on Petition – Delinquency*
- *Disposition – Previously Sustained Petitions*
- *Disposition – Modify Probation/Wardship Ordered*
- *Finding – Judicial Notice of All Prior Findings*
- *Finding – Maximum Confinement Time for Offenses*
- *Finding – Out-of-State Placement – Delinquency*
- *Finding – Pending Placement*
- *Finding – Physical Custody Removed From Parent/Guardian*
- *Finding – Probation Officer to Provide Reunification*
- *Finding – Reasonable Efforts – Removal*
- *Finding – Reunification Services Do Not Need to be Provided*
- *Miscellaneous – All Prior Orders Not in Conflict Remain in Effect*
- *Miscellaneous – Attachment – Disposition*
- *Miscellaneous – Judicial Notice of Social Study/Other Relevant Evidence*
- *Order – Commitment Ordered*
- *Order – Commitment to DJJ*
- *Order – Commitment to Juvenile Hall*
- *Order – County of Residence*
- *Order – Other Order 1 – Disposition*
- *Order – Other Order 2 – Disposition*

- *Order – Update Commitment*
- *Participant – Child to Reside in the Custody of Legal Guardian*
- *Participant – Child to reside in the custody of Parent 1*
- *Participant – Child to reside in the custody of Parent 2*
- *Participant – Custody Terms*
- *Participant – Terms Attachment*
- *Transfer – Transfer for Disposition/Other Proceedings*

4.2 Subsequent Events

The integration partner is notified and updates its system appropriately with the true finding on a Juvenile 602 case notification.

- Conditions = None

5.0 Data Exchange Errors and Exceptions

The document titled “*CCMS Data Exchange Errors*” contains all exchange specific errors that may occur between an integration partner and CCMS. It includes three sections that list error codes, names, and descriptions for each type below.

- **Transient and Non-Transient Errors** may occur while the message is processed by the ISB.
- **Functional Errors** may occur while processing messages in the ISB or CCMS.
- **Transactional Errors** may occur while processing a message in CCMS according to the Business Rule validations identified in [Section 6.0, Additional Business Rules and Processes](#).

6.0 Additional Business Rules and Processes

This section contains additional business rules and process requirements for an integration partner to successfully send or receive information from CCMS. The content of this section reflects specific rules that either cannot or are not enforced in the technical specifications that accompany the onboarding documents, specifically the mapping spreadsheets, exchange schemas, and code schemas. Integration partners must rely on this information to produce and consume valid messages exchanged with CCMS.

6.1 Business Rules

Table 1. Business Rules

Referenced Element	Business Rule Description
Add/Remove Indicator	Allowable values are: <ul style="list-style-type: none"> A R
Child Committed to DCR	Applicable if "Order – Commitment to DJJ" F/A is entered
Child Declared a Ward	Applicable if Wardship Stage = "Ward"
Child Must Pay Restitution	Applicable if "Order – Commitment to DJJ" F/A is entered
Child on Probation Without Reform	Applicable if "The Child has been on probation in the custody of the parent or guardian and has failed to reform" = "Y"
Child Placed on Probation	Applicable if Wardship Pursuant To is "W&I 725(a)"
Child's License Is Delayed	ID's from 156 to 158 are mutually exclusive
Child's License Is Revoked	ID's from 156 to 158 are mutually exclusive
Child's License Is Suspended	ID's from 156 to 158 are mutually exclusive
Dismissed Interest of Justice	Applicable if Dismissal Subtype is "Pursuant to W&I 782"
Dismissed No Treatment Needed	Applicable if Dismissal Subtype is: <ul style="list-style-type: none"> Pursuant to W&I 651 Pursuant to W&I 654.1 Pursuant to W&I 654.2
For a Period Of Years	ID's 159 and 160 are mutually exclusive and is dependent of ID 158

Referenced Element	Business Rule Description
Last Name	Branch: Court.Case.Event.Delinquency.Section12.Parent1.Person <ul style="list-style-type: none"> Required if participant is not an Entity/Organization
	Branch: Court.Case.Event.Delinquency.Section12.Parent2.Person <ul style="list-style-type: none"> Required if participant is not an Entity/Organization
	Branch: Court.Case.Event.Delinquency.Section12.LegalGuardian.Person <ul style="list-style-type: none"> Required if participant is not an Entity/Organization
	Branch: Court.Case.Event.Delinquency.Section16.NoReunification.Person <ul style="list-style-type: none"> Required if participant is not an Entity/Organization
	Branch: Court.Case.Event.Delinquency.Section16.Parent1.Person <ul style="list-style-type: none"> Required if participant is not an Entity/Organization
	Branch: Court.Case.Event.Delinquency.Section16.Parent2.Person <ul style="list-style-type: none"> Required if participant is not an Entity/Organization
	Branch: Court.Case.Event.Delinquency.Section16.LegalGuardian.Person <ul style="list-style-type: none"> Required if participant is not an Entity/Organization
	Branch: Court.Case.Event.Delinquency.Section16.Other.Person <ul style="list-style-type: none"> Required if participant is not an Entity/Organization

6.2 Allowable Values

This section provides additional information regarding individual allowable values for elements contained in this exchange. Essentially, allowable values come in two forms: AOC codes or Boolean types. This section includes subsections that list the elements by type with specific instructions for each type.

6.2.1 AOC code values

This section provides additional information regarding individual allowable values for elements contained in this exchange. Essentially, allowable values come in two forms—AOC codes or Boolean types. This section includes subsections that list the elements by type with specific instructions for each type.

6.2.2 AOC code values

Table 2 contains element names and the corresponding AOC Code Schema Table name.

- The AOC Code Schema contains the actual coded values and descriptions required for each element used in this exchange.
- The AOC Code Schema is provided in the exchange schema file under the AOC Code folder.

Integration partners should refer to the AOC Code Schema for all element allowable values listed in this table.

As a reference, AOC created the “*AOC Codes*” document that lists all AOC Code tables, values, and descriptions in alphabetical order. This document reflects the current values (i.e., at the time of this writing) and should not be used as the authoritative source for validation purposes.

Table 2. AOC Code Values

Element Name	AOC Code Schema Table Name
Request and Success Response	
Address Type	AddressCodeSimpleType
Case Category	CaseCategoryCodeSimpleType
Case Status	CaseStatusSimpleType
Case Transferred to County	CountySimpleType
Case Type	CaseCodeSimpleType
Charge Degree	ChargeDegreeCodeSimpleType
Child Declared a Ward	WardshipStageCodeSimpleType
Count Type	CountCodeSimpleType
Country	CountryCodeSimpleType
County of Camp	CountyCodeSimpleType
County of Detainment	CountyCodeSimpleType
County of Residence	CountyCodeSimpleType
Dismissed Interest of Justice	DispositionSubCodeSimpleType
Disposition Type	DispositionCodeSimpleType
External Case Xref Type	ExternalCaseCodeSimpleType This exchange only allows the following enumerated values for this element: <ul style="list-style-type: none"> • Booking Number = BKNMBR • Citation Number = CTNNMBR • DA Case File Number = DACSNMBR • DR Number = DRNUM • Filing Agency Case = FILEAGNCY • Fingerprint Card Number = FINGPRNT • Probation Case Number = PROCSNMBR • Public Defender Case Number = PDCN • Warrant Control Number = WARCONNUM
Gender	GenderCodeSimpleType
Offense Level	OffenseLevelCodeSimpleType
Participant Case Name Type	NameCodeSimpleType
Participant Type	ParticipantCodeSimpleType
Plea	PleaCodeSimpleType
State	StateCodeSimpleType
Street Direction	StreetDirectionCodeSimpleType
Street Type	StreetCodeSimpleType
Violation Type	ViolationCodeSimpleType
Error Response	
Error Code	See “ <i>CCMS Data Exchange Errors</i> ” for a list of all errors.
Error Description	See “ <i>CCMS Data Exchange Errors</i> ” for a list of all errors.

6.2.3 Court configurable elements

Each local court has the ability to create, edit, and remove the allowable values for the following data element within this exchange:

- Calendar Type

In practice, many of these values are standard across courts, but integration partners should contact the local court administrator for a definitive and authoritative list of the court specific allowable values. These values will be contained in the Court Policy File, which describes specific court business and operational rules (e.g., hours of operation, code lists, and fee schedules) in a machine readable format. At the time of this writing, the Court Policy File for each local court is under development and will be available prior to CCMS implementation. Integration partners can learn more about the Court Policy File by referring to the “*Court Policy File Overview*” document.

6.2.4 Indicator element allowable values

This exchange includes numerous ‘Indicator’ elements that provide additional information related to a specific condition or scenario. The following is a list of indicator elements contained in this exchange. The allowable values for each element must be either ‘true’ or ‘false; or ‘1’ = true or ‘0’ = false. Integration Partners should not rely on the exchange mapping spreadsheets for the indicator element allowable values, but rather the exchange schemas contained in the appropriate schema folder.

These schemas are the authoritative source for the indicator allowable values.

- All Prior Orders
- Child Advised
- Child Committed to A Camp
- Child Committed to DCR
- Child Continued as a Ward
- Child Detained and At Risk
- Child May Only Drive To and From
- Child Must Pay Restitution
- Child on Probation Without Reform
- Child Placed on Probation
- Child Remanded Forthwith
- Child’s License Is Suspended
- Child’s License Is Revoked
- Child’s License is Delayed

- Committed Till Prog Reqts Complete
- Court Read and Considered
- Court Takes Judicial Notice
- Continue Custody to Probation Ofcr
- Convicted Murder of Another Child
- Convicted of Conspiring to Murder
- Convicted of Felony Assault
- Convicted Vol Manslaughter Child
- County Authorized to Pay
- Court Read and Considered
- Custody to Probation Officer
- DSS Performed Initial Inspection
- Determined By Probation Officer
- Dismissed No Treatment Needed
- Effort to Prevent Removal
- Felony
- Fifteen Day Review
- FC 7911.1 Requirements Met
- Guardian Cannot Provide
- In Custody Without Probation
- In Custody With Probation
- In Custody Under JV-624 Conditions
- In Juvenile Hall Pending Placement
- In The Home of Other
- InState Facilities Unavailable
- Legacy Case Indicator
- Misdemeanor
- No Effort to Prevent Removal
- Notice Given
- Other Reason
- Remove Custody From parent

- Parent Right Specifically Limited
- Parental Rights for Sib Terminated
- Permanence Planning Hearing
- Previously Terminated
- Probation Officer Recommended
- Restitution on Attachment
- Reunification Biological Father
- Reunification Indian Custodian
- Reunification Other
- Reunification Presumed Father
- Reunification With Alleged Father
- Reunification With Legal Guardian
- Reunification with Mother
- Six Month Review
- Subject to Electronic Monitoring
- Surrender To Court
- Surrender to Probation Officer
- The parent must cooperate
- Until 18 Years Old

6.3 Business Processes

There are no additional business processes that impact the exchange.

6.4 Data Classification

At the time of this writing, no security classifications or restrictions to the data contained in this exchange have been identified.

6.4.1 Privacy considerations

At the time of this writing, no specific privacy considerations for the content contained in this exchange have been identified.

7.0 ISB Message Processing

7.1 Routing

The ISB performs message routing for this exchange. Routing rules are based on the content contained in the Common Service Header, described in the “*Service Description Document-Common Technical Requirements.*” In addition, AOC will use the following data elements’ rules to route this exchange to an integration partner:

- Court Code
- Exchange Name

7.2 Message Interactions

This is an asynchronous exchange; however, all messages sent to the ISB are processed in real time. This means messages received by the ISB are validated, translated to the appropriate format, and routed to the destination immediately.

- Starting at 8:00 a.m., this message is retransmitted every hour until 4:00 p.m. before being declared unsuccessful.
- Starting at 4:00 p.m., this message is retransmitted every hour until:00 8 a.m. before being declared unsuccessful.

Refer to the “*Data Exchange Functional Design Guidelines*” document for an additional description of the message interactions with the ISB and CCMS.

Appendix A. Acronyms

Table 3. Acronyms

Acronym	Name
ACCMS	Appellate Court Case Management System
AOC	Administrative Office of the Courts
CCMS	California Case Management System
CCTC	California Courts Technology Center
CEB	Common Element Block
DI	data integration
F&F	Fees and Fines
FTA	Failure To Appear
IP	integration partner
ISB	Integrated Services Backbone
LIAM	Local Integration Assessment Methodology
NIEM	National Information Exchange Model
OWSM	Oracle Web Services Management
RRA	request/reply-asynchronous
RRS	request/reply-synchronous
SDD	Service Description Document
SLA	service level agreement
SME	subject matter experts
URL	Universal Resource Locator
WSDL	Web Services Description Language
XML	eXtensible Markup Language

