



Service Description Document: CCMS Data Exchange DSP917

COURT SENDS RESTRAINING ORDER
ISSUANCE/CANCEL/UPDATE
NOTIFICATION
JUNE 2011



ADMINISTRATIVE OFFICE
OF THE COURTS

INFORMATION SERVICES DIVISION

Judicial Council of California
Administrative Office of the Courts
Information Services Division
455 Golden Gate Avenue
San Francisco, California 94102-3688
415-865-4200
www.courts.ca.gov

Copyright © 2011 by Judicial Council of California/Administrative Office of the Courts. All rights reserved.

Except as permitted under the Copyright Act of 1976 and as otherwise expressly provided herein, no part of this publication may be reproduced in any form or by any means, electronic or mechanical, including the use of information storage and retrieval systems, without permission in writing from the copyright holder. Permission is hereby granted to nonprofit institutions to reproduce and distribute this publication for educational purposes if the copies credit the copyright holder.

Revision History

Version	Date	Author	Description of Changes
1.0.0	June 2011	L. Modisette	First release

Reference Documents

Version	Date	Document Title	Author
9.0	June 2011	ISB and CCMS Data Exchange Overview	Deloitte Consulting
9.0	June 2011	Data Exchange Functional Design Guidelines	Deloitte Consulting
2.0.0	September 2011	Data Exchange Common Technical Requirements	AOC
1.0.0	September 2010	DSP917 Data Exchange Specification	Deloitte Consulting/AOC/SEARCH
9.0	July 2011	CCMS Data Exchange Errors	Deloitte Consulting
1.0	July 2010	Court Policy File Overview	AOC
N/A	September 2011	AOC Codes	AOC/SEARCH
1.0	September 2011	Local Integration Assessment Methodology (LIAM)	AOC
2.0	June 2010	LIAM Light	AOC

Table of Contents

1.0	Executive Summary	1
1.1	Purpose	1
1.2	Audience.....	3
1.3	CCMS Data Exchange Overview	3
1.4	Assumptions	4
1.5	Risks	4
1.6	Conventions Used in this Document	4
1.6.1	Exchange naming convention	4
2.0	Exchange Description	5
2.1	Capabilities	5
2.2	Real World Effects	5
2.3	Related Forms and Exchanges	5
2.3.1	Business response exchanges	5
2.3.2	Related exchanges	5
2.3.3	Related forms	5
2.4	Assumptions and Dependencies	9
3.0	Primary and Alternate Information Flows	11
3.1	Primary Flow	11
3.2	Alternate Flow	12
3.3	Messages	12
4.0	Exchange Context.....	13
4.1	Triggering Events	13
4.2	Subsequent Events.....	14
5.0	Data Exchange Errors and Exceptions	15
6.0	Additional Business Rules and Processes	17
6.1	Business Rules.....	17
6.2	Allowable Values	18
6.2.1	AOC code values	18
6.2.2	Court configurable elements	19
6.2.3	Indicator element allowable values	19
6.3	Business Processes	20
6.4	Data Classification	20
6.4.1	Privacy considerations.....	20
7.0	ISB Message Processing.....	21
7.1	Routing	21
7.2	Message Interactions	21
Appendix A.	Acronyms	23

List of Figures

Figure 1. Implementation Phases	Error! Bookmark not defined.
Figure 2. Send Restraining Order Issuance/Cancel/Update Notification Activity Diagram	11

List of Tables

Table 1. Business Rules	17
Table 2. AOC Code Values	18
Table 3. Acronyms	23

1.0 Executive Summary

1.1 Purpose

The purpose of this document is to provide integration partners with descriptive information regarding the context and business processes when preparing to implement data exchanges with the California Court Case Management System (CCMS). This document details the data exchange that will be used by a trial court to send restraining order issuances, modifications, and removals to an integration partner when any of the following actions are ordered by the trial court:

- Restraining order is issued.
- Restraining order is modified.
- Restraining order is removed.

Integration partners most likely to use this data exchange include:

- Attorney General
- City attorney
- Department of Child Support Services
- California Department of Justice
- District attorney – adult
- District attorney – juvenile
- Law enforcement agency/sheriff
- Probation – adult
- Probation – juvenile

This document reflects agency business rules and policies that have a direct impact on the system interactions among court and integration partners. This is a companion to the exchange specifications contained in the exchange eXtensible Markup Language (XML) schemas, Web Service Description Language (WSDL) files, and the “*CCMS Data Exchange Common Technical Requirements*,” and should be reviewed along with those documents when preparing for deployment. The XML schemas, WSDLs, and Common Technical Requirements provide specific technical details regarding message structures and implementation requirements, including infrastructure, security, and deployment information. Collectively, these documents provide all of the information an integration partners requires to send and receive data with CCMS for this exchange.

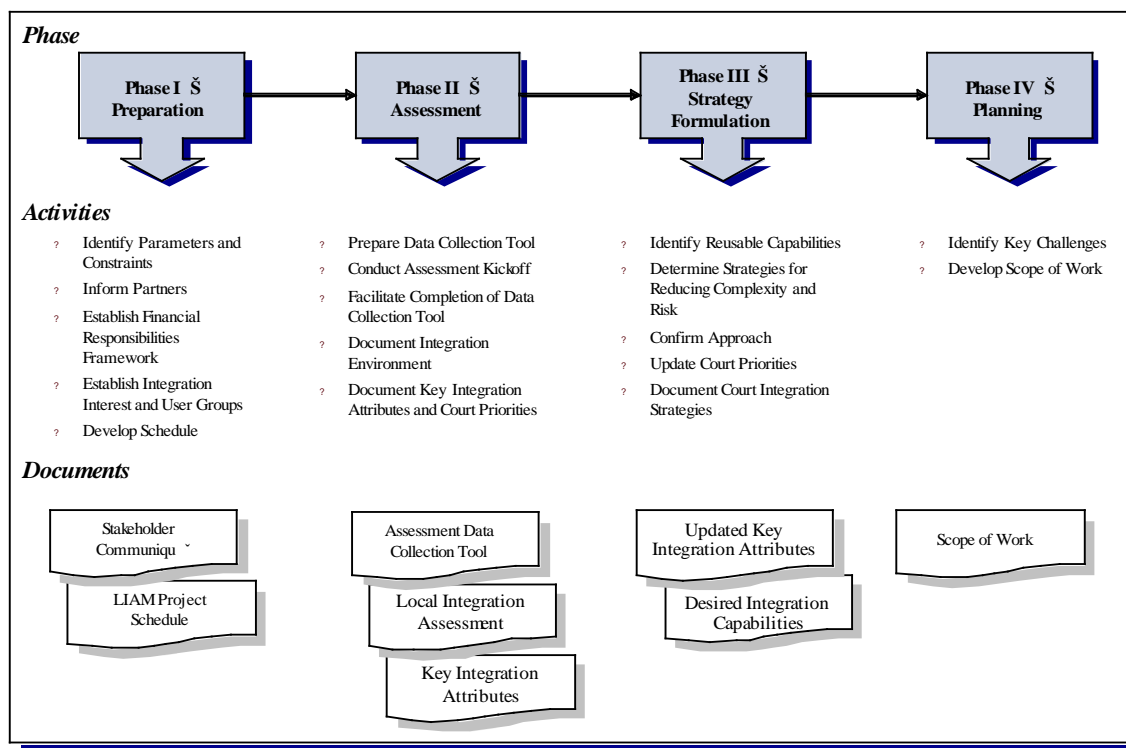
The information contained here compiles court-specific information from a number of AOC documents and resources, including the “*CCMS Data Exchange Functional Design*,” “*CCMS*

Core Application Functionality,” and the “*CCMS Technical Architecture*.” The content of this Service Description Document provides integration partners with a concise, detailed explanation of data exchange content and related business processes, and includes the following topics:

- Exchange description
- Events and conditions
- CCMS business processes and rules
- CCMS data requirements
- Message patterns
- Exceptions, acknowledgements, errors
- Other descriptive information

This document is based on the [Global Justice Reference Architecture’s Service Specifications Guidelines](#)¹.

Prior to implementing data exchanges with CCMS, it is strongly advised that each integration partner participate in a readiness assessment prepared by the AOC in partnership with the courts. This assessment, called the “*Local Integration Assessment Methodology (LIAM)*,” consists of four phases that provide integration partners and the courts with necessary information prior to implementation activities. Figure 1 describes this process in more detail.



¹ <http://www.it.ojp.gov/default.aspx?area=nationalInitiatives&page=1015#RefSSPs>

Figure 1. Implementation Phases

As an alternative, an integration partner can choose to participate in the LIAM Light assessment. Alternatively, an integration partner can choose to participate in the “*LIAM Light*” assessment, which focuses on replacing existing electronic exchanges instead of automating new exchanges.

After CCMS is deployed with the replaced existing exchanges, integration partners may want to use the full LIAM to assess other business processes that can be automated using other exchanges.

1.2 Audience

Audiences for this document are subject matter experts (SMEs) and technical staff, who need to understand how this data exchange works in order to implement it between an integration partner and CCMS. Known audiences include:

- Integration partner CCMS Data Exchange Implementation Team
- CCMS Deployment Team
- AOC Data Integration staff, including business analysts, developers, and architects, etc.
- Integrated Services Backbone (ISB) vendors
- CCMS vendors
- Court CCMS project managers and SMEs

1.3 CCMS Data Exchange Overview

As part of the CCMS project, 121 data exchanges servicing all case types were developed to enable courts and their integration partners to exchange information using CCMS. Sixty-three exchanges are based on data exchange standards established in the [National Information Exchange Model](#)² (NIEM), and 58 exchanges are based on California judicial branch XML schema. It is important to note that each of the 121 exchanges is actually a set of exchanges that includes individual exchanges for Request, Response, and Error Handling. A complete list of CCMS data exchanges is available on the [Integration Partners website](#)³.

² <http://niem.gov/>

³ <http://www.courts.ca.gov/partners/integration.htm>

1.4 Assumptions

The following is a list of current assumptions:

- Integration partners and courts have completed their LIAM process as a prerequisite to implementing data exchanges.
- Integration partners have a working proficiency with Web services and XML, and a basic understanding and knowledge of the NIEM structure and implementation concepts.

1.5 Risks

To date, there are no risks identified for this exchange.

1.6 Conventions Used in this Document

1.6.1 Exchange naming convention

During the data exchange development process, the AOC adopted a standard naming convention to describe the “action” of the exchange from the court perspective, and applied an alphanumeric categorization for various court functions. Each follows this format:

<Application>-<Interface Number><Interface Name>

Where:

- *Application* is CCMS
- *Interface Number* consists of code name of functional area (two or three letters (e.g., “DOJ” for Department of Justice-related data exchanges)), and a three-digit number:
 - If the first digit is “8” then CCMS is receiving the data from an integration partner.
 - If the first digit is “9” then CCMS is sending the data to an integration partner.
 - The remaining two digits identify the unique integer ID sequentially assigned to the data exchange.
- *Interface Name* is descriptive name of the data exchange.

Examples:

- CCMS-V4-DOJ802 Receive Disposition Error Report Notification
 - CCMS receives data from an integration partner.
- CCMS-V4-DOJ901 Send Initial, Subsequent Disposition Notification
 - CCMS sends data to an integration partner.
 - CCMS sends data to the integration partner.

2.0 Exchange Description

This section outlines the requirements and functional design for the DSP917 Send Restraining Order Issuance/Cancel/Update Notification data exchange. A trial court uses this NIEM-based data exchange to send restraining order issuances, modifications, and removals to an integration partner when a restraining order is issued, modified, or removed by the trial court.

On success, the response to this data exchange is returned from the integration partner indicating whether the restraining order issuance, modification, or removal notification has been accepted or rejected. When the integration partner is the California Department of Justice, restraining order information is returned (e.g., restraining order file control number) when the notification is accepted. On error, the response is returned from the integration partner containing a rejection indicator and reason.

2.1 Capabilities

This service provides the ability for a trial court (service provider) to **send** restraining order issuances, modifications, and removals to an integration partner (service consumer).

2.2 Real World Effects

This service allows various integration partners (service consumer) to **receive** restraining order issuances, modifications, and removals from the courts (service provider).

2.3 Related Forms and Exchanges

2.3.1 Business response exchanges

All exchanges subject to a court clerk review have corresponding “business response” exchanges that describe the outcome of the court clerk’s review.

- This data exchange is not subject to a clerk review; consequently, there are no business responses for this data exchange.

2.3.2 Related exchanges

The related exchanges identify associated exchanges integration partners may use to modify, update, or complete a correlated business process.

- There are no related exchanges.

2.3.3 Related forms

“Related forms” refers to forms, reports, or other documents currently used by courts and integration partners for the types of documents that may be included in this data exchange. This list is not exhaustive and is not an authoritative list of documents replaced by the data exchange; it is only for informational purposes.

- Order - CH - Restraining Order
 - CH125 - Reissue Temporary Restraining Order (Civil Harassment)
 - CH140 - Restraining Order After Hearing To Stop Harassment
- Order - DVEARO - DV Orders
 - DV130 - Restraining Order After Hearing (CLETS-OAH) (Order of Protection) (Domestic Violence Protection)
 - EA130 - Order After Hearing Restraining Elder or Dependent Adult Abuse (CLETS-EAR or EAF)(Elder or Dependent Adult Abuse Prevention)
- Order - DVEARO - EA Orders
 - DV130 - Restraining Order After Hearing (CLETS-OAH) (Order of Protection) (Domestic Violence Protection)
 - EA130 - Order After Hearing Restraining Elder or Dependent Adult Abuse (CLETS-EAR or EAF)(Elder or Dependent Adult Abuse Prevention)
- Order - DVEATRO - Common Orders
 - DV110 - Temporary Restraining Order and Notice of Hearing (CLETS—TRO)(Domestic Violence Prevention)
 - EA120 - Notice Of Hearing And Temporary Restraining Order (CLET-TEA or TEF) (Elder or Dependent Adult Abuse Protection)
- Order - DVEATRO - DV Orders
 - DV110 - Temporary Restraining Order and Notice of Hearing (CLETS—TRO)(Domestic Violence Prevention)
 - EA120 - Notice Of Hearing And Temporary Restraining Order (CLET-TEA or TEF) (Elder or Dependent Adult Abuse Protection)
- Order - DVEATRO - EA Orders
 - DV110 - Temporary Restraining Order and Notice of Hearing (CLETS—TRO)(Domestic Violence Prevention)
 - EA120 - Notice Of Hearing And Temporary Restraining Order (CLET-TEA or TEF) (Elder or Dependent Adult Abuse Protection)
- Order - Modify CH – Reissuance
 - CH125 - Reissue Temporary Restraining Order (Civil Harassment)
- Order - Modify CH - Restraining Order
 - CH140 - Restraining Order After Hearing To Stop Harassment
- Order - Modify DVEARO - Common Information
 - DV110 - Temporary Restraining Order and Notice of Hearing (CLETS—TRO)(Domestic Violence Prevention)
 - DV130 - Restraining Order After Hearing (CLETS-OAH) (Order of Protection) (Domestic Violence Protection)
 - EA120 - Notice Of Hearing And Temporary Restraining Order (CLET-TEA or TEF) (Elder or Dependent Adult Abuse Protection)

- EA130 - Order After Hearing Restraining Elder or Dependent Adult Abuse(CLETS-EAR or EAF)(Elder or Dependent Adult Abuse Prevention)
- Order - Modify DVEARO - Common Orders
 - DV130 - Restraining Order After Hearing (CLETS-OAH) (Order of Protection)(Domestic Violence Protection)
 - EA130 - Order After Hearing Restraining Elder or Dependent Adult Abuse(CLETS-EAR or EAF)(Elder or Dependent Adult Abuse Prevention)
- Order - Modify DVEARO - DV Orders
 - DV130 - Restraining Order After Hearing (CLETS-OAH) (Order of Protection)(Domestic Violence Protection)
 - EA130 - Order After Hearing Restraining Elder or Dependent Adult Abuse(CLETS-EAR or EAF)(Elder or Dependent Adult Abuse Prevention)
- Order - Modify DVEARO - EA Orders
 - DV130 - Restraining Order After Hearing (CLETS-OAH) (Order of Protection)(Domestic Violence Protection)
 - EA130 - Order After Hearing Restraining Elder or Dependent Adult Abuse(CLETS-EAR or EAF)(Elder or Dependent Adult Abuse Prevention)
- Order - Modify DVEATRO - Common Orders
 - DV110 - Temporary Restraining Order and Notice of Hearing (CLETS—TRO)(Domestic Violence Prevention)
 - EA120 - Notice Of Hearing And Temporary Restraining Order (CLET-TEA or TEF) (Elder or Dependent Adult Abuse Protection)
- Order - Modify DVEATRO - DV Orders
 - DV110 - Temporary Restraining Order and Notice of Hearing (CLETS—TRO)(Domestic Violence Prevention)
 - EA120 - Notice Of Hearing And Temporary Restraining Order (CLET-TEA or TEF) (Elder or Dependent Adult Abuse Protection)
- Order - Modify DVEATRO - EA Orders
 - DV110 - Temporary Restraining Order and Notice of Hearing (CLETS—TRO)(Domestic Violence Prevention)
 - EA120 - Notice Of Hearing And Temporary Restraining Order (CLET-TEA or TEF) (Elder or Dependent Adult Abuse Protection)
- Order - Modify Reissuance – DVEA
 - CH125 - Reissue Temporary Restraining Order (Civil Harassment)
 - DV125 - Reissue Temporary Restraining Order (Domestic Violence Prevention)
 - EA125 - Request and Order for Reissuance of Temporary Restraining Order(CLETS-TEA, or TEF) (Elder or Dependent Adult Abuse Protection)
- Order - Modify Reissuance – OSC
 - CH140 - Restraining Order After Hearing To Stop Harassment
- Order - Reissuance – DVEA

- DV125 - Reissue Temporary Restraining Order (Domestic Violence Prevention)
 - EA125 - Request and Order for Reissuance of Temporary Restraining Order(CLETS-TEA, or TEF) (Elder or Dependent Adult Abuse Protection)
- Order - Reissuance – OSC
 - FL306 - Application and Order for Reissuance of Order to Show Cause (Family Law-Governmental-Uniform Parentage-Custody And Support-Juvenile)
- Order - Additional Protective Order text
 - CR-160 - Criminal Protective Order - Domestic Violence (CLETS - CPO) (Penal Code, §§ 136.2 and 1203.097(a)(2), 273.5(i), and 646.9(k).)
- Order - Application / Affidavit for Restraining Order
 - JV245- Application and Affidavit For Restraining Order – Juvenile Order - Juvenile Restraining Order - Child is Ward / Subject of 602
 - JV-250 - Restraining Order - Juvenile (CLETS - JUV)
- Order - Juvenile Restraining Order - Child is Ward / Subject of 602
 - JV-251 - Application and Order for Reissuance of Order to Show Cause (Family Law-Governmental-Uniform Parentage-Custody And Support-Juvenile)Order - Juvenile Restraining Order - Child Visitation
 - JV-250 - Restraining Order - Juvenile (CLETS - JUV)
- Order - Juvenile Restraining Order - Must not remove the children
 - JV-250 - Restraining Order - Juvenile (CLETS - JUV)
- Order - Juvenile Restraining Order - Stay Away
 - JV-250 - Restraining Order - Juvenile (CLETS - JUV)
- Order - Modify Protective Order
 - CR-160 - Criminal Protective Order - Domestic Violence (CLETS - CPO) (Penal Code, §§ 136.2 and 1203.097(a)(2), 273.5(i), and 646.9(k).)
- Order - Protective Order Granted
 - CR-160 - Criminal Protective Order - Domestic Violence (CLETS - CPO) (Penal Code, §§ 136.2 and 1203.097(a)(2), 273.5(i), and 646.9(k).)
 - CR-161 - Criminal Protective Order - Other Than Domestic Violence (CLETS - CPO) (Pen. Code, §§ 136.2 and 646.9(k))
 - CR-165 - Notice of Termination of Protective Order in Criminal Proceedings(CLETS) (Penal Code, §§ 136.2, 1203.097(a)(2), 273.5(i), and 646.9(k))
- Order - Protective Order Safe Exchange
 - CR-160 - Criminal Protective Order - Domestic Violence (CLETS - CPO) (Penal Code, §§ 136.2 and 1203.097(a)(2), 273.5(i), and 646.9(k).)
- Order - Restraining Orders
 - JV-250 - Restraining Order - Juvenile (CLETS – JUV)
- Order - Order to Show Cause / Temporary Restraining Order

- WV-120 – Order to Show Cause and Temporary Restraining Order (CLETS)Violence or Threats of Violence Against Employee (CLETS)
- Order - Injunction Prohibiting Violence / Threats Against Employees
 - WV-140 – Order After Hearing on Petition of Employer for Injunction Prohibiting Violence or Threats of Violence Against Employee (CLETS)
- Order - Workplace Violence Temporary Restraining Order - Personal Conduct Orders
 - WV-120 – Order to Show Cause and Temporary Restraining Order (CLETS)
 - WV-140 – Order After Hearing on Petition of Employer for Injunction Prohibiting Violence or Threats of Violence Against Employee (CLETS)
- Order - Workplace Violence Temporary Restraining Order - Protected Person
 - WV-120 – Order to Show Cause and Temporary Restraining Order (CLETS)
 - WV-140 – Order After Hearing on Petition of Employer for Injunction Prohibiting Violence or Threats of Violence Against Employee (CLETS)
- Order - Workplace Violence Temporary Restraining Order - Protected Person Family Members
 - WV-120 – Order to Show Cause and Temporary Restraining Order (CLETS)
 - WV-140 – Order After Hearing on Petition of Employer for Injunction Prohibiting Violence or Threats of Violence Against Employee (CLETS)
- Order - Workplace Violence Temporary Restraining Order - Stay Away Orders
 - WV-120 – Order to Show Cause and Temporary Restraining Order (CLETS)
 - WV-140 – Order After Hearing on Petition of Employer for Injunction Prohibiting Violence or Threats of Violence Against Employee (CLETS)
- Miscellaneous - Law Enforcement Agencies to Receive Copies of Restraining Orders
 - WV-120 – Order to Show Cause and Temporary Restraining Order (CLETS)
 - WV-140 – Order After Hearing on Petition of Employer for Injunction Prohibiting Violence or Threats of Violence Against Employee (CLETS)
- Order - Order to Surrender Firearms in Domestic Violence Case.
 - CR-162 - Order to Surrender Firearms in Domestic Violence Case
- Order - Order to Surrender Firearms in Domestic Violence Case.
 - CR-162 - Order to Surrender Firearms in Domestic Violence Case Order - CH - TRO.
 - CR-120 – Notice of Hearing and Temporary Restraining Order
- Order - Modify CH - TRO.
 - CR-120 – Notice of Hearing and Temporary Restraining Order

2.4 Assumptions and Dependencies

The data exchange specification package includes a data mapping specification based on the NIEM- and CCMS-specific definitions used in this exchange. Each integration partner is responsible for mapping, or performing data translations if necessary, for all content (including coded values) sent and received through this exchange.

3.0 Primary and Alternate Information Flows

This section provides a basic description of the exchange sequence and flow between an integration partner and CCMS; it explains the primary scenario for successful delivery and receipt of data exchange content, and the “alternate” flow of information for error and exception handling scenarios. Additional diagrams and descriptions of information flows are found in the *“Data Exchange Functional Design Guidelines.”*

3.1 Primary Flow

1. CCMS sends a restraining order issuance, cancelation, or update request to the ISB.
2. The ISB receives the restraining order issuance, cancelation, or update request, performs schema validation, facilitates data mapping to the NIEM standard, and forwards the notification to the integration partner.
3. The integration partner receives the message and performs business validations on the data exchange per the rules outlined in [Section 6.0, Additional Business Rules and Processes](#).
4. The integration partner sends the success or failure response to the ISB.
5. The ISB receives the response message, performs schema validation, translates to the California Judicial Branch XML schema standard, and forwards the response to CCMS.
6. CCMS receives the response and takes appropriate action.

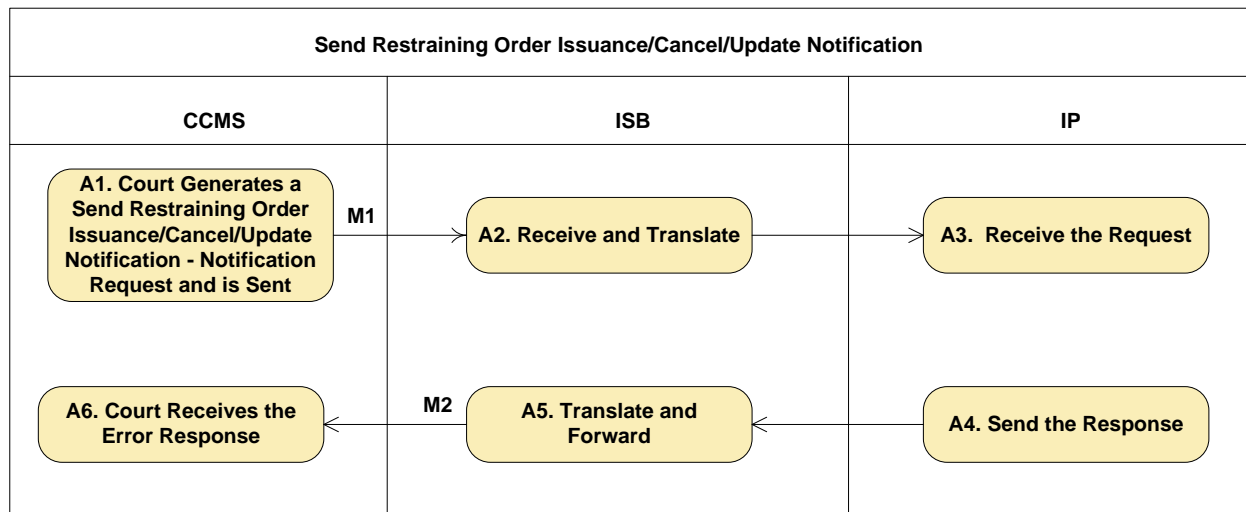


Figure 2. Court Sends Restraining Order Issuance/Cancel/Update Notification Activity Diagram

3.2 Alternate Flow

This exchange includes three possible alternate flows, depending upon the nature of the problem.

- The ISB returned a positive acknowledgement to the source system (CCMS), and an exception occurs within the ISB, (e.g., schema validation) before the request is forwarded to the target system (integration partner). The ISB handles the exception and sends a response (containing failure reason) to the source system (CCMS).
- The ISB returned a positive acknowledgement to the source system (CCMS), and an exception occurs when the ISB attempts to forward the request to the target system (integration partner). The ISB handles the exception and sends a response (containing failure reason) to the source system (CCMS).
- The ISB forwards the request to the target system (integration partner) and receives a negative acknowledgement, (e.g., syntactic data error) from the target system. The ISB handles the exception and sends a response (containing failure reason) to the source system (CCMS).

3.3 Messages

A data exchange message⁴ is a complete package of information sent between the courts and an integration partner. This exchange includes two types of messages.

1. Request message
 - a. The Request message contains the notification – restraining order information, (e.g., protected party, restrained party, restraining order type) sent by a court to an integration partner.
2. Response messages
 - a. The Success Response message contains the action response – restraining order response, (e.g., restraining order file control number) sent by the integration partner to the court.
 - b. The Error Response message containing one or more errors and their description is sent by the IPs to the court. This message informs the court that the request was not successful and corrective action is required.

⁴ As defined in the Justice Reference Architecture v1.8 February 2010.

4.0 Exchange Context

This section provides integration partners with specific information regarding the context of the exchange.

4.1 Triggering Events

The trial court issues, cancels, or updates a restraining order by processing any of the following:

- Order - Protective Order Granted.
- Order - Additional Protective Order text.
- Order - Protective Order Safe Exchange.
- Order - Modify Protective Order.
- Order - Remove Protective Order - (Entered in Error).
- Order - Terminate Protective Order.
- Order - Remove Termination of Protective Order (Entered in Error).
- Order - Temporary Protective Order - Findings.
- Order - Modify Temporary Protective Order - Findings.
- Order - Remove Temporary Protective Order - Findings.
- Order - Temporary Protective Order – Order.
- Order - Modify Temporary Protective Order – Order
- Order - Remove Temporary Protective Order – Order.
- Order - Extend Restraining Order.
- Order - Order to Show Cause/Temporary Restraining Order.
- Order - Workplace Violence Temporary Restraining Order - Protected Person.
- Order - Workplace Violence Temporary Restraining Order - Protected PersonFamily Members.
- Order - Workplace Violence Temporary Restraining Order - Personal ConductOrders.
- Order - Workplace Violence Temporary Restraining Order - Stay Away Orders.
- Order - Injunction Prohibiting Violence / Threats Against Employees
- Miscellaneous - Law Enforcement Agencies to Receive Copies of RestrainingOrders.
- Order - Juvenile Restraining Order.
- Order - Juvenile Restraining Order - Stay Away.
- Order - Juvenile Restraining Order - Child Visitation.
- Order - Juvenile Restraining Order - Must not remove the children.
- Order - Juvenile Restraining Order - Child is Ward/Subject of 602.
- Order - DVEARO – Common Orders.
- Order - DVEARO – DV Orders.
- Order – DVEARO – EA Orders.
- Order – DVEATRO – Common Orders.

- Order – DVEATRO – EA Orders.
- Order – DVEATRO – DV Orders.
- Order – CH - Restraining Order.
- Order – CH Reissuance.
- Order – Reissuance DVEA (PP).
- Order – Reissuance OSC.
- Order – Modify CH - Restraining Order.
- Order – Modify CH – Reissuance.
- Order – Modify DVEARO - Common Information.
- Order – Modify DVEARO - Common Orders.
- Order – Modify DVEARO - EA Orders.
- Order – Modify DVEARO - DV Orders.
- Order – Modify DVEATRO - Common Orders.
- Order – Modify DVEATRO - EA Orders.
- Order – Modify DVEATRO - DV Orders.
- Order – Modify Reissuance – DVEA.
- Order – Modify Reissuance – OSC.
- Miscellaneous – Application/Affidavit for Restraining Order.
- Miscellaneous – Modify -Application/Affidavit for Restraining Order.
- Order - Order to Surrender Firearms in Domestic Violence Case.
- Order – CH – TRO.
- Order – Modify CH – TRO.

The above triggering events have no associated conditions.

4.2 Subsequent Events

The integration partner is notified and updates its system with the restraining order information.

- Conditions = None

5.0 Data Exchange Errors and Exceptions

The document titled “*CCMS Data Exchange Errors*” contains all exchange specific errors that may occur between an integration partner and CCMS. It includes three sections that list error codes, names, and descriptions for each type below.

- **Transient and Non-Transient Errors** may occur while the message is processed by the ISB.
- **Functional Errors** may occur while processing messages in the ISB or CCMS.
- **Transactional Errors** may occur while processing a message in CCMS according to the Business Rule validations identified in [Section 6.0 Additional Business Rules and Processes](#).

6.0 Additional Business Rules and Processes

This section contains additional business rules and process requirements for an integration partner to successfully send or receive information from CCMS. The content of this section reflects specific rules that either cannot or are not enforced in the technical specifications that accompany the onboarding documents, specifically the mapping spreadsheets, exchange schemas, and code schemas. Integration partners must rely on this information to produce and consume valid messages exchanged with CCMS.

6.1 Business Rules

Table 1. Business Rules

Referenced Element	Business Rule Description
Add/Update/Remove Indicator	Allowable values are: <ul style="list-style-type: none"> A = Add R = Remove U = Update
Calendar Type	<ul style="list-style-type: none"> Not applicable when event is "Reserved" Available Calendar Types are determined by the case category of the case selected. Determines the available Event Type values
Caution and Medical Conditions	Can occur up to 9 times in one record.
Court Name	Required for ERO.
Date of Birth	YYYY-MM-DD
Date of Cancellation	YYYY-MM-DD
Date of Death	YYYY-MM-DD
Expiration Date	<ul style="list-style-type: none"> Required for ERO. YYYY-MM-DD
Firearm Provisions Indicator	Allowable values are: <ul style="list-style-type: none"> N P S B (text field)
First Name	Branch: Court. Case. Restraining Order. Server <ul style="list-style-type: none"> Applicable only when the RO is served in court. (This is the bailiff's information.)
ID Expiry Date	YYYY-MM-DD
ID Type	Include Social Security Number
Issue Date	<ul style="list-style-type: none"> ISS is required for ERO. YYYY-MM-DD
Last Name	Branch: Court. Case. Restraining Order. Server <ul style="list-style-type: none"> Required when Participant is not an Entity/Organization. Applicable only when the RO is served in court. (This is the bailiff's information.) Branch: Court. Case. Participant. Protected. Person <ul style="list-style-type: none"> Required when Participant is not an Entity/Organization.

Referenced Element	Business Rule Description
License Plate State	<ul style="list-style-type: none"> LIS is entered positionally as part of the LIG field. LIC, LIY, and LIT are required when LIS is entered.
Middle Name	Branch: Court. Case. Restraining Order. Server <ul style="list-style-type: none"> Applicable only when the RO is served in court. (This is the bailiff's information.)
Organization Name	Required when Participant is not a "Person"
Participant ID	Branch: Court. Case. Restraining Order. Server <ul style="list-style-type: none"> Applicable only when the RO is served in court. (This is the bailiff's information.)
Restraining Protective Order Type	Required for ERO.
Served Date	<ul style="list-style-type: none"> Required for SRO. When entered with ERO or MRO, SRB is required. YYYY-MM-DD
Suffix	Branch: Court. Case. Restraining Order. Server <ul style="list-style-type: none"> Applicable only when the RO is served in court. (This is the bailiff's information.)
Year	Must be in YYYY format

6.2 Allowable Values

This section provides additional information regarding individual allowable values for elements contained in this data exchange. Essentially, allowable values come in two forms—AOC codes or Boolean types. This section includes subsections that list the elements by type with specific instructions for each type.

6.2.1 AOC code values

Table 2 contains element names and the corresponding AOC Code Schema Table name.

- The AOC Code Schema contains the actual coded values and descriptions required for each element used in this exchange.
- The AOC Code Schema is provided in the exchange schema file under the "AOC Code" folder.

Integration partners should refer to the AOC Code Schema for all element-allowable values listed in this table.

As a reference, the AOC created the "AOC Codes" document, which lists all AOC code tables, values, and descriptions in alphabetical order. At the time of this writing, "AOC Codes" reflects the current values and should not be used as the authoritative source for validation purposes.

Table 2. AOC Code Values

Element Name	AOC Code Schema Table Name
Request	
Address Type	AddressCodeSimpleType
Birth Type	DOBCodeSimpleType
Country	CountryCodeSimpleType
Event Status	EventStatusCodeSimpleType

Element Name	AOC Code Schema Table Name
External Case Xref Type	ExternalCaseCodeSimpleType
Eye Color	EyeColorCodeSimpleType
Gender	SexCodeSimpleType
Hair Color	HairColorCodeSimpleType
ID Issuing State	StateCodeSimpleType
ID Type	IdentificationCodeSimpleType
Item	ScarsMarksTattoosItemCodeSimpleType
Participant Case Name Type	NameCodeSimpleType
Participant Role	ParticipantRoleCodeSimpleType
Participant Type	ParticipantCodeSimpleType
Race	RaceCodeSimpleType
Side of Body	ScarsMarksTattoosSideCodeSimpleType
Skin Tone	SkinToneCodeSimpleType
State	StateCodeSimpleType
Street Direction	StreetDirectionCodeSimpleType
Street Type	StreetCodeSimpleType
Error Response	
Error Code	See “CCMS Data Exchange Errors” for a list of all errors.
Error Description	See “CCMS Data Exchange Errors” for a list of all errors.

6.2.2 Court configurable elements

Each local court has the ability to create, edit, and remove the allowable values for the following data elements within this exchange:

- Calendar Type

In practice, many of these values are standard across courts, but integration partners should contact their local court administrator for an authoritative list of the court-specific allowable values. These values will be contained in the Court Policy File, which describes specific court business and operational rules (e.g., hours of operation, code lists, and fee schedules) in a machine-readable format. The Court Policy File for each local court will be developed as part of the CCMS deployment of that court. Integration partners can learn more about the Court Policy File by referring to the “*Court Policy File Overview*.”

6.2.3 Indicator element allowable values

This exchange includes numerous “Indicator” elements that provide additional information related to a specific condition or scenario. Following is a list of indicator elements contained in this exchange. The allowable values for each element must be either “true” or “false” or “1” = true or “0” = false. Integration partners should not rely on the exchange mapping spreadsheets for the indicator element allowable values, but rather the exchange schemas contained in the appropriate schema folder.

These schemas are the authoritative source for the indicator allowable values:

- Contact Person Indicator
- Inactive Indicator

- Legacy Case Indicator
- Present In Court Indicator
- Primary Indicator

6.3 Business Processes

There are no additional business processes that impact the exchange.

6.4 Data Classification

At the time of this writing, no security classifications or restrictions to the data contained in this exchange have been identified.

6.4.1 Privacy considerations

At the time of this writing, no specific privacy considerations for the content contained in this exchange have been identified.

7.0 ISB Message Processing

7.1 Routing

The ISB performs message routing for this exchange. Routing rules are based on the content contained in the Common Service Header, described in the “*CCMS Data Exchange: Common Technical Requirements*.” In addition, AOC will use the following data elements’ rules to route this exchange to an integration partner:

- Court Code
- Data Exchange Name

7.2 Message Interactions

All messages sent from the ISB are processed synchronously in real time. This means messages received by the trial court are validated, translated to the appropriate format, and routed to the destination immediately.

- A message is retransmitted every 10 minutes up to 3 times before being declared unsuccessful.

Refer to the “*Data Exchange Functional Design Guidelines*” for an additional description of the message interactions with the ISB and CCMS.

Appendix A. Acronyms

Table 3. Acronyms

Acronym	Name
ACCMS	Appellate Court Case Management System
AOC	Administrative Office of the Courts
CCMS	California Case Management System
CCPOR	California Courts Protective Order Registry
CCTC	California Courts Technology Center
CEB	Common Element Block
DI	Data Integration
F&F	Fees and Fines
FTA	Failure To Appear
IPs	Integration Partners
ISB	Integration Services Backbone
LIAM	Local Integration Assessment Methodology
NIEM	National Information Exchange Model
OWSM	Oracle Web Services Management
RRA	Request Reply Asynchronous
RRS	Request Reply Synchronous
SDD	Service Description Document
SLA	Service Level Agreement
SME	Subject Matter Experts
URL	Universal Resource Locator
WSDL	Web Services Description Language

