



# Service Description Document: CCMS Data Exchange EFL801

---

COURT RECEIVES ACCOUNTING  
RECONCILIATION REPORT FROM EFSPS  
NOTIFICATION  
JUNE 2011



ADMINISTRATIVE OFFICE  
OF THE COURTS

---

INFORMATION SERVICES DIVISION

Judicial Council of California  
Administrative Office of the Courts  
Information Services Division  
455 Golden Gate Avenue  
San Francisco, California 94102-3688  
415-865-4200  
*www.courts.ca.gov*

Copyright © 2011 by Judicial Council of California/Administrative Office of the Courts. All rights reserved.

Except as permitted under the Copyright Act of 1976 and as otherwise expressly provided herein, no part of this publication may be reproduced in any form or by any means, electronic or mechanical, including the use of information storage and retrieval systems, without permission in writing from the copyright holder. Permission is hereby granted to nonprofit institutions to reproduce and distribute this publication for educational purposes if the copies credit the copyright holder.

## Revision History

Version	Date	Author	Description of Changes
1.0.0	June 2011	M. West	First release

## Reference Documents

Version #	Date	Document Title	Author
9.0	June 2011	<a href="#">ISB and CCMS Data Exchange Overview</a>	Deloitte Consulting
9.0	June 2011	<a href="#">Data Exchange Functional Design Guidelines</a>	Deloitte Consulting
2.0.0	September 2011	<a href="#">Data Exchange Common Technical Requirements</a>	AOC
1.0.0	September 2011	<a href="#">EFL801 Data Exchange Specification</a>	Deloitte Consulting/AOC/SEARCH
9.0	July 2011	<a href="#">CCMS Data Exchange Errors</a>	Deloitte Consulting
1.0	July 2010	<a href="#">Court Policy File Overview</a>	AOC
N/A	September 2011	<a href="#">AOC Codes</a>	AOC/SEARCH
1.0	September 2011	<a href="#">Local Integration Assessment Methodology (LIAM)</a>	AOC
2.0	June 2010	<a href="#">LIAM Light</a>	AOC



## Table of Contents

<b>1.0</b>	<b>Executive Summary .....</b>	<b>1</b>
1.1	Purpose .....	1
1.2	Audience.....	3
1.3	CCMS Data Exchange Overview.....	3
1.4	Assumptions .....	3
1.5	Risks .....	3
1.6	Conventions Used in this Document .....	4
1.6.1	Exchange naming convention .....	4
<b>2.0</b>	<b>Exchange Description .....</b>	<b>5</b>
2.1	Capabilities .....	5
2.2	Real World Effects .....	5
2.3	Related Forms and Exchanges .....	5
2.3.1	Business response exchanges.....	5
2.3.2	Related exchanges.....	5
2.3.3	Related forms .....	5
2.4	Assumptions and Dependencies.....	6
<b>3.0</b>	<b>Primary and Alternate Information Flows.....</b>	<b>7</b>
3.1	Primary Flow .....	7
3.2	Alternate Flow .....	8
3.3	Messages .....	8
<b>4.0</b>	<b>Exchange Context.....</b>	<b>9</b>
4.1	Triggering Events .....	9
4.2	Subsequent Events.....	9
<b>5.0</b>	<b>Data Exchange Errors and Exceptions .....</b>	<b>11</b>
<b>6.0</b>	<b>Additional Business Rules and Processes.....</b>	<b>12</b>
6.1	Business Rules.....	12
6.2	Allowable Values .....	12
6.2.1	AOC code values .....	12
6.2.2	Court configurable elements .....	12
6.2.3	Indicator element allowable values.....	12
6.3	Business Processes .....	12
6.4	Data Classification .....	13
6.4.1	Privacy considerations .....	13
<b>7.0</b>	<b>ISB Message Processing.....</b>	<b>15</b>
7.1	Routing .....	15
7.2	Message Interactions .....	15
<b>Appendix A.</b>	<b>Acronyms .....</b>	<b>17</b>

## List of Figures

Figure 1. Implementation Phases .....	2
Figure 2. Court Receives Accounting Reconciliation Report (EFSPs) Notification Activity Diagram.....	7

## List of Tables

Table 1. AOC Code Values .....	12
Table 2. Acronyms.....	17





## 1.0 Executive Summary

### 1.1 Purpose

The purpose of this document is to provide integration partners with descriptive information regarding the context and business processes when preparing to implement data exchanges with the California Court Case Management System (CCMS). This document details the exchange content requirements and related business requirements needed for a trial court to successfully receive accounting reconciliation report payment information from an integration partner.

Integration partners most likely to use this data exchange include:

- Electronic filing service providers

This document reflects agency business rules and policies that have a direct impact on the system interactions among court and integration partners. This is a companion to the exchange specifications contained in the exchange eXtensible Markup Language (XML) schemas, Web Service Description Language (WSDL) files, and the “*CCMS Data Exchange Common Technical Requirements*,” and should be reviewed along with those documents when preparing for deployment. The XML schemas, WSDLs, and Common Technical Requirements provide specific technical details regarding message structures and implementation requirements, including infrastructure, security, and deployment information. Collectively, these documents provide all of the information an integration partners requires to send and receive data with CCMS for this exchange.

The information contained here compiles court-specific information from a number of AOC documents and resources, including the “*CCMS Data Exchange Functional Design*,” “*CCMS Core Application Functionality*,” and the “*CCMS Technical Architecture*.” The content of this Service Description Document provides integration partners with a concise, detailed explanation of data exchange content and related business processes, and includes the following topics:

- Exchange description
- Events and conditions
- CCMS business processes and rules
- CCMS data requirements
- Message patterns
- Exceptions, acknowledgements, errors
- Other descriptive information

This document is based on the [Global Justice Reference Architecture’s Service Specifications Guidelines](http://www.it.ojp.gov/default.aspx?area=nationalInitiatives&page=1015#RefSSPs)<sup>1</sup>.

---

<sup>1</sup> <http://www.it.ojp.gov/default.aspx?area=nationalInitiatives&page=1015#RefSSPs>

Prior to implementing data exchanges with CCMS, it is strongly advised that each integration partner participate in a readiness assessment prepared by the AOC in partnership with the courts. This assessment, called the “*Local Integration Assessment Methodology (LIAM)*,” consists of four phases that provide integration partners and the courts with necessary information prior to implementation activities. Figure 1 describes this process in more detail.

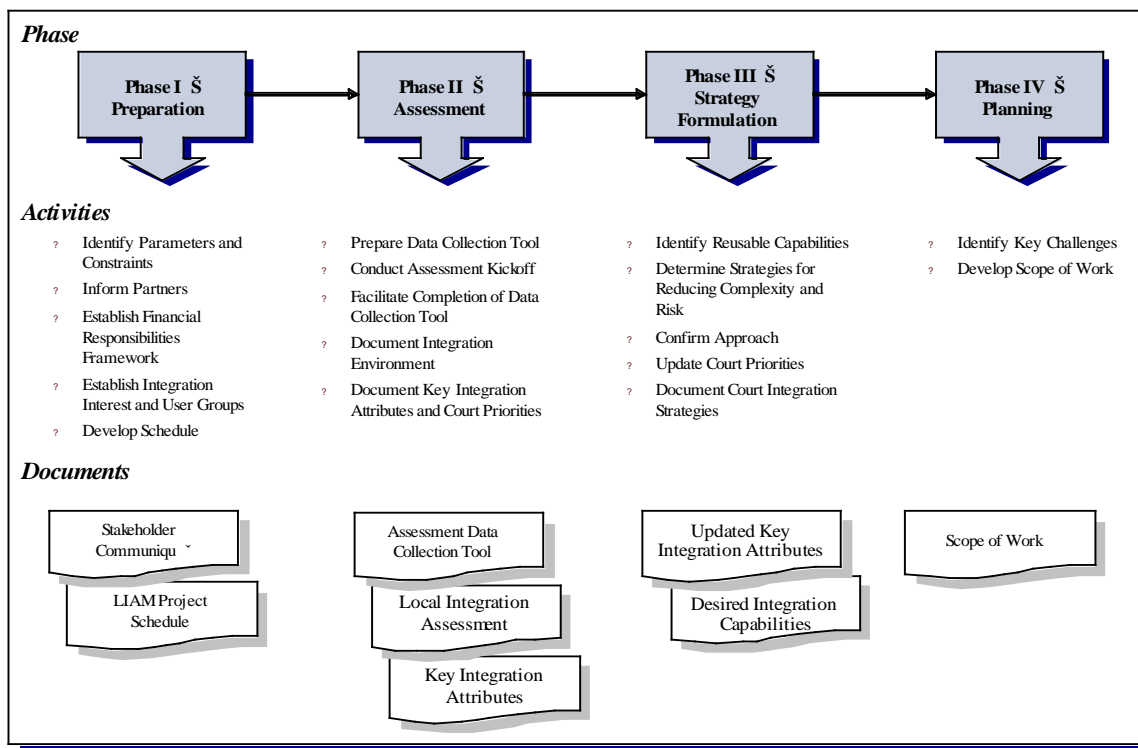


Figure 1. Implementation Phases

Alternatively, an integration partner can choose to participate in the “*LIAM Light*” assessment, which focuses on replacing existing electronic exchanges instead of automating new exchanges.

After CCMS is deployed with the replaced existing exchanges, integration partners may want to use the full LIAM to assess other business processes that can be automated using other exchanges.

## 1.2 Audience

Audiences for this document are subject matter experts (SMEs) and technical staff, who need to understand how this data exchange works in order to implement it between an integration partner and CCMS. Known audiences include:

- Integration partner CCMS Data Exchange Implementation Team
- CCMS Deployment Team
- AOC Data Integration staff, including business analysts, developers, and architects, etc.
- Integrated Services Backbone (ISB) vendors
- CCMS vendors
- Court CCMS project managers and SMEs

## 1.3 CCMS Data Exchange Overview

As part of the CCMS project, 121 data exchanges servicing all case types were developed to enable courts and their integration partners to exchange information using CCMS. Sixty-three exchanges are based on data exchange standards established in the [National Information Exchange Model](#)<sup>2</sup> (NIEM), and 58 exchanges are based on California judicial branch XML schema. It is important to note that each of the 121 exchanges is actually a set of exchanges that includes individual exchanges for Request, Response, and Error Handling. A complete list of CCMS data exchanges is available on the [Integration Partners website](#)<sup>3</sup>.

## 1.4 Assumptions

The following is a list of current assumptions:

- Integration partners and courts have completed their LIAM process as a prerequisite to implementing data exchanges.
- Integration partners have a working proficiency with Web services and XML, and a basic understanding and knowledge of the NIEM structure and implementation concepts.

## 1.5 Risks

To date, there are no risks identified for this exchange.

---

<sup>2</sup> <http://niem.gov/>

<sup>3</sup> <http://www.courts.ca.gov/partners/482.htm>

## **1.6 Conventions Used in this Document**

### **1.6.1 Exchange naming convention**

During the data exchange development process, the AOC adopted a standard naming convention to describe the “action” of the exchange from the court perspective, and applied an alphanumeric categorization for various court functions. Each follows this format:

<Application>-<Interface Number><Interface Name>

Where:

- Application is CCMS
- *Interface Number* consists of code name of functional area (two or three letters (e.g., “DOJ” for Department of Justice-related data exchanges)), and a three-digit number:
  - If the first digit is “8” then CCMS is receiving the data from an integration partner.
  - If the first digit is “9” then CCMS is sending the data to an integration partner.
  - The remaining two digits identify the unique integer ID sequentially assigned to the data exchange.
- *Interface Name* is descriptive name of the data exchange.

Examples:

- CCMS-V4-DOJ802 Receive Disposition Error Report Notification
  - CCMS receives data from an integration partner.
- CCMS-V4-DOJ901 Send Initial, Subsequent Disposition Notification
  - CCMS sends data to an integration partner.

## **2.0 Exchange Description**

This section outlines the requirements and functional design for the EFL801 Receive Accounting Reconciliation Report from EFSPs Notification data exchange. A trial court uses this California judicial branch XML schema-based data exchange to receive accounting reconciliation report payment information from an integration partner.

This data exchange does not include a functional success response message, but integration partners may return an error response message to the court if an error is encountered.

### **2.1 Capabilities**

This service provides a trial court (service provider) with the ability to **receive** the accounting reconciliation report information, sent from an integration partner (service consumer), to resolve recorded payment data with the payments forwarded by the integration partner on electronically filed cases.

### **2.2 Real World Effects**

This service provides an integration partner (service consumer) with the ability to **send** payment information to a trial court (service provider) on electronically filed cases.

### **2.3 Related Forms and Exchanges**

#### **2.3.1 Business response exchanges**

All exchanges subject to a court clerk review have corresponding business response exchanges that describe the outcome of the court clerk review.

- This data exchange is not subject to a clerk review and, consequently, there are no business responses for this data exchange.

#### **2.3.2 Related exchanges**

The related exchanges identify associated exchanges integration partners may use to modify, update, or complete a correlated business process.

- There are no related exchanges.

#### **2.3.3 Related forms**

“Related forms” refers to forms, reports, or other documents currently used by courts and integration partners for the types of documents that may be included in this data exchange. This list is not exhaustive and is not an authoritative list of documents replaced by the data exchange; it is only for informational purposes.

- There are no related forms.

## ***2.4 Assumptions and Dependencies***

The on-boarding documentation includes a data mapping specification based on CCMS-specific definitions used in this exchange. Each integration partner is responsible for mapping, or performing data translations if necessary, for all content (including coded values) sent and received through this exchange.

## 3.0 Primary and Alternate Information Flows

This section provides a basic description of the exchange sequence and flow between an integration partner and CCMS; it explains the primary scenario for successful delivery and receipt of data exchange content, and the “alternate” flow of information for error and exception handling scenarios. Additional diagrams and descriptions of information flows are found in the “*Data Exchange Functional Design Guidelines*.”

### 3.1 Primary Flow

1. The integration partner sends the accounting reconciliation report notification message to the Integration Services Backbone (ISB).
2. The ISB receives the accounting reconciliation report message, performs schema validation, and forwards the message to CCMS.
3. CCMS acknowledges receipt of the message.
4. CCMS performs business validations on the data exchange per the rules outlined in [Section 6.0, Additional Business Rules and Processes](#). If encountered, CCMS sends the error response to the ISB.
5. The ISB receives the error response message, performs schema validation, and forwards the error response message to the integration partner.
6. The integration partner receives the error response message and takes the appropriate action.

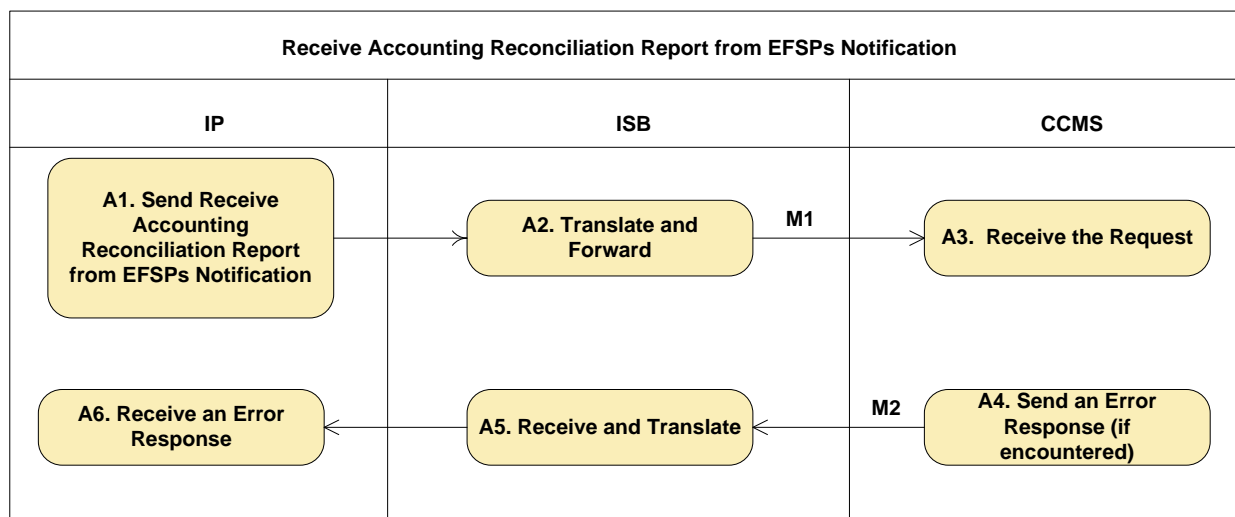


Figure 2. Court Receives Accounting Reconciliation Report from EFSPs Notification Activity Diagram

## 3.2 Alternate Flow

This exchange includes three possible alternate flows, depending upon the nature of the problem.

- The ISB returned a positive acknowledgement to the source system (integration partner,) and an exception occurs within the ISB, (e.g., schema validation) before the request is forwarded to the target system (CCMS). The ISB handles the exception and sends a response (containing the failure reason) to the source system (integration partner system.)
- The ISB returned a positive acknowledgement to the source system (integration partner system), and an exception occurs when the ISB attempts to forward the request to the target system (CCMS). The ISB handles the exception and sends a response (containing the failure reason) to the source system (integration partner.)
- The ISB forwards the request to the target system (CCMS) and receives a negative acknowledgement, (e.g., syntactic data error) from the target system. The ISB handles the exception and sends a response (containing the failure reason) to the source system (integration partner system.)

## 3.3 Messages

A data exchange message<sup>4</sup> is a complete package of information sent between the courts and an integration partner. This exchange includes two types of messages.

1. Request message
  - a. The Request message contains the request for accounting reconciliation information (e.g. receipt number, payment date, and amount paid, etc.) sent by the integration partner to the court.
2. Response message
  - a. The Error Response message contains error and error description information indicating the accounting reconciliation information message was not successful and corrective action is required.

---

<sup>4</sup> As defined in the Justice Reference Architecture v1.8 February 2010.



## **4.0 Exchange Context**

This section provides integration partners with specific information regarding the context of the exchange.

### **4.1 Triggering Events**

An integration partner sends the trial court accounting reconciliation information for electronically filed cases.

- Conditions = The integration partner has electronically filed one or more cases and sent payment to the trial court on these cases.

### **4.2 Subsequent Events**

CCMS is updated with the received reconciliation payment information.

- Conditions = None



## 5.0 Data Exchange Errors and Exceptions

The document titled “*CCMS Data Exchange Errors*” contains all exchange specific errors that may occur between an integration partner and CCMS. It includes three sections that list error codes, names, and descriptions for each type below.

- **Transient and Non-Transient Errors** may occur while the message is processed by the ISB.
- **Functional Errors** may occur while processing messages in the ISB or CCMS.
- **Transactional Errors** may occur while processing a message in CCMS according to the Business Rule validations identified in [Section 6.0, Additional Business Rules and Processes](#).

## 6.0 Additional Business Rules and Processes

This section contains additional business rules and process requirements for an integration partner to successfully send or receive information from CCMS. The content of this section reflects specific rules that either cannot or are not enforced in the technical specifications that accompany the onboarding documents, specifically the mapping spreadsheets, exchange schemas, and code schemas. Integration partners must rely on this information to produce and consume valid messages exchanged with CCMS.

### 6.1 Business Rules

There are no business rules identified for this exchange.

### 6.2 Allowable Values

There are no allowable values for this data exchange.

#### 6.2.1 AOC code values

Table 1. AOC Code Values

Element Name	Schema Name
Error Message	
Error Code	See “CCMS Data Exchange Errors” for a list of all errors.
Error Description	See “CCMS Data Exchange Errors” for a list of all errors.

#### 6.2.2 Court configurable elements

Local courts have the ability to create, edit, and remove allowable values for the following data elements within this exchange:

- There are no court configurable data elements in this data exchange.

In practice, many of these values are standard across courts, but integration partners should contact their local court administrator for an authoritative list of the court-specific allowable values. These values will be contained in the Court Policy File, which describes specific court business and operational rules (e.g., hours of operation, code lists, and fee schedules) in a machine-readable format. The Court Policy File for each local court will be developed as part of the CCMS deployment of that court. Integration partners can learn more about the Court Policy File by referring to the “*Court Policy File Overview*.”

#### 6.2.3 Indicator element allowable values

There are no indicator element allowable values for this exchange.

## 6.3 Business Processes

There are no additional business processes, which impact this exchange.

## **6.4 Data Classification**

At the time of this writing, no security classifications or restrictions to the data contained in this data exchange have been identified.

### **6.4.1 Privacy considerations**

At the time of this writing, no specific privacy considerations for the content contained in this data exchange have been identified.



## **7.0 ISB Message Processing**

### **7.1 Routing**

The ISB performs message routing for this data exchange. Routing rules are based on the content contained in the Common Service Header, which is described in the “*CCMS Data Exchange Common Technical Requirements*.”

- No additional routing rules apply to this exchange.

### **7.2 Message Interactions**

All messages sent from the ISB are processed synchronously in real time. This means messages received by the trial court are validated, translated to the appropriate format, and routed to the destination immediately.

- A message is retransmitted every 10 minutes up to three times before being declared unsuccessful.

Refer to the “*Data Exchange Functional Design Guidelines*” for an additional description of the message interactions within the ISB and CCMS.





## Appendix A. Acronyms

*Table 2. Acronyms*

<b>Acronym</b>	<b>Name</b>
ACCMS	Appellate Court Case Management System
AOC	Administrative Office of the Courts
CCMS	California Case Management System
CCTC	California Courts Technology Center
CEB	Common Element Block
DI	Data Integration
F&F	Fees and Fines
FTA	Failure To Appear
IPs	Integration Partners
ISB	Integration Services Backbone
LIAM	Local Integration Assessment Methodology
NIEM	National Information Exchange Model
OWSM	Oracle Web Services Management
RRA	Request Reply Asynchronous
RRS	Request Reply Synchronous
SDD	Service Description Document
SLA	Service Level Agreement
SME	Subject Matter Experts
URL	Universal Resource Locator
WSDL	Web Services Description Language
XML	Extensible Markup Language

