



Service Description Document: CCMS Data Exchange FCC802

COURT RECEIVES TRAFFIC SCHOOL
EXTENSION REQUEST
JUNE 2011



ADMINISTRATIVE OFFICE
OF THE COURTS

INFORMATION SERVICES DIVISION

Judicial Council of California
Administrative Office of the Courts
Information Services Division
455 Golden Gate Avenue
San Francisco, California 94102-3688
415-865-4200
www.courts.ca.gov

Copyright © 2011 by Judicial Council of California/Administrative Office of the Courts. All rights reserved.

Except as permitted under the Copyright Act of 1976 and as otherwise expressly provided herein, no part of this publication may be reproduced in any form or by any means, electronic or mechanical, including the use of information storage and retrieval systems, without permission in writing from the copyright holder. Permission is hereby granted to nonprofit institutions to reproduce and distribute this publication for educational purposes if the copies credit the copyright holder.

Version	Date	Author	Description of Changes
1.0.0	June 2011	M. West	First release

Reference Documents

Version	Date	Document Title	Author
9.0	June 2011	ISB and CCMS Data Exchange Overview	Deloitte Consulting
9.0	June 2011	Data Exchange Functional Design Guidelines	Deloitte Consulting
2.0.0	September 2011	Data Exchange Common Technical Requirements	AOC
1.0.0	September 2011	FCC802 Data Exchange Specification	Deloitte Consulting/AOC/SEARCH
9.0	July 2011	CCMS Data Exchange Errors	Deloitte Consulting
1.0	July 2010	Court Policy File Overview	AOC
N/A	September 2011	AOC Codes	AOC/SEARCH
1.0	September 2011	Local Integration Assessment Methodology (LIAM)	AOC
2.0	June 2010	LIAM Light	AOC

Table of Contents

1.0	Executive Summary	1
1.1	Purpose	1
1.2	Audience.....	2
1.3	CCMS Data Exchange Overview	3
1.4	Assumptions	3
1.5	Risks	3
1.6	Conventions Used in this Document	3
1.6.1	Exchange naming convention	3
2.0	Exchange Description	5
2.1	Capabilities	5
2.2	Real World Effects	5
2.3	Related Forms and Exchanges	5
2.3.1	Business response exchanges	5
2.3.2	Related exchanges	5
2.3.3	Related forms	6
2.4	Assumptions and Dependencies	6
3.0	Primary and Alternate Information Flows.....	7
3.1	Primary Flow	7
3.2	Alternate Flow	8
3.3	Messages	8
4.0	Exchange Context.....	9
4.1	Triggering Events	9
4.2	Subsequent Events.....	9
5.0	Data Exchange Errors and Exceptions	11
6.0	Additional Business Rules and Processes	13
6.1	Business Rules.....	13
6.2	Allowable Values	13
6.2.1	AOC code values	13
6.2.2	Court configurable elements	14
6.2.3	Indicator element allowable values	14
6.3	Business Processes	14
6.4	Data Classification	14
6.4.1	Privacy considerations.....	14
7.0	ISB Message Processing.....	15
7.1	Routing	15
7.2	Message Interactions	15
Appendix A.	Acronyms	17

List of Figures

Figure 1. Implementation Phases	2
Figure 2. Court Receives Traffic School Extension Request Activity Diagram	7

List of Tables

Table 1. Business Rules	13
Table 2. AOC Code Values	13
Table 3. Acronyms.....	17

1.0 Executive Summary

1.1 Purpose

The purpose of this document is to provide integration partners with descriptive information regarding the context and business processes when preparing to implement data exchanges with the California Court Case Management System (CCMS). This document details the exchange content requirements and related business requirements needed for the trial court to receive a traffic school extension request from an integration partner who is attempting to extend the date by which a case participant must complete traffic school.

Integration partners most likely to use this data exchange include:

- Traffic school vendors

This document reflects agency business rules and policies that have a direct impact on the system interactions among court and integration partners. This is a companion to the exchange specifications contained in the exchange eXtensible Markup Language (XML) schemas, Web Service Description Language (WSDL) files, and the “*CCMS Data Exchange Common Technical Requirements*,” and should be reviewed along with those documents when preparing for deployment. The XML schemas, WSDLs, and Common Technical Requirements provide specific technical details regarding message structures and implementation requirements, including infrastructure, security, and deployment information. Collectively, these documents provide all of the information an integration partners requires to send and receive data with CCMS for this exchange.

The information contained here compiles court-specific information from a number of AOC documents and resources, including the “*CCMS Data Exchange Functional Design*,” “*CCMS Core Application Functionality*,” and the “*CCMS Technical Architecture*.” The content of this Service Description Document provides integration partners with a concise, detailed explanation of data exchange content and related business processes, and includes the following topics:

- Exchange description
- Events and conditions
- CCMS business processes and rules
- CCMS data requirements
- Message patterns
- Exceptions, acknowledgements, errors
- Other descriptive information

This document is based on the [Global Justice Reference Architecture’s Service Specifications Guidelines](#)¹.

¹ <http://www.it.ojp.gov/default.aspx?area=nationalInitiatives&page=1015#RefSSPs>

Prior to implementing data exchanges with CCMS, it is strongly advised that each integration partner participate in a readiness assessment prepared by the AOC in partnership with the courts. This assessment, called the “*Local Integration Assessment Methodology (LIAM)*,” consists of four phases that provide integration partners and the courts with necessary information prior to implementation activities. Figure 1 describes this process in more detail.

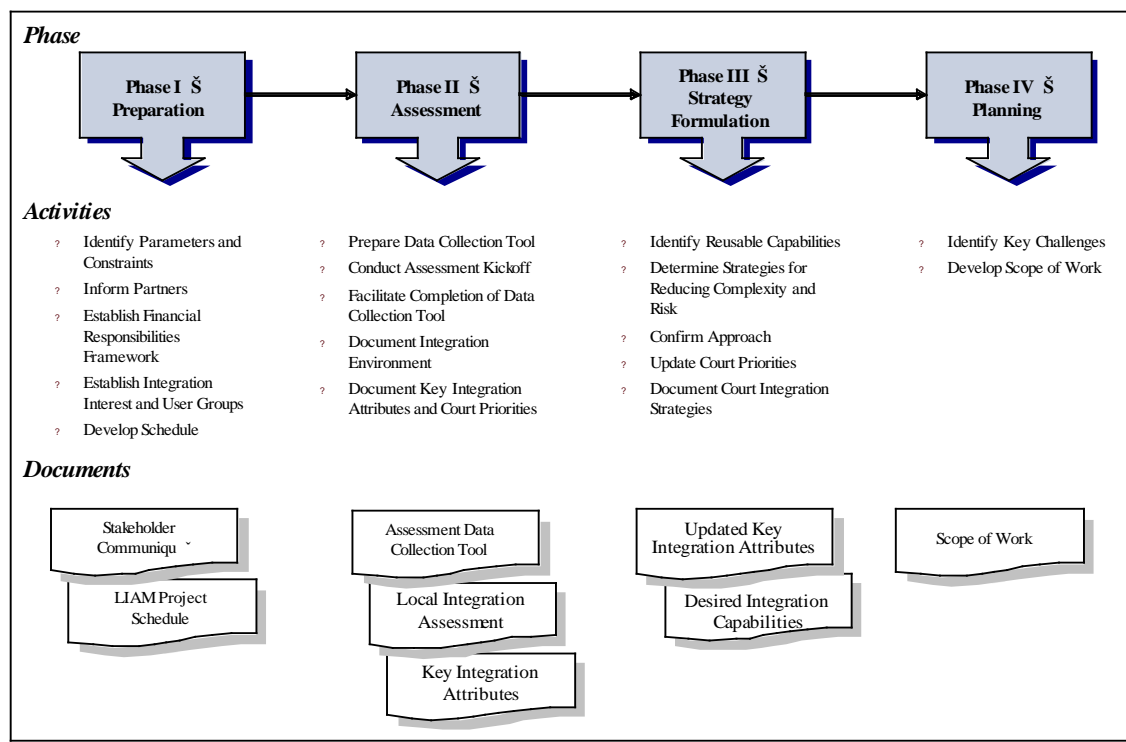


Figure 1. Implementation Phases

Alternatively, an integration partner can choose to participate in the “*LIAM Light*” assessment, which focuses on replacing existing electronic exchanges instead of automating new exchanges.

After CCMS is deployed with the replaced existing exchanges, integration partners may want to use the full LIAM to assess other business processes that can be automated using other exchanges.

1.2 Audience

Audiences for this document are subject matter experts (SMEs) and technical staff, who need to understand how this data exchange works in order to implement it between an integration partner and CCMS. Known audiences include:

- Integration partner CCMS Data Exchange Implementation Team
- CCMS Deployment Team
- AOC Data Integration staff, including business analysts, developers, and architects, etc.

- Integrated Services Backbone (ISB) vendors
- CCMS vendors
- Court CCMS project managers and SMEs

1.3 CCMS Data Exchange Overview

As part of the CCMS project, 121 data exchanges servicing all case types were developed to enable courts and their integration partners to exchange information using CCMS. Sixty-three exchanges are based on data exchange standards established in the [National Information Exchange Model](#)² (NIEM), and 58 exchanges are based on California judicial branch XML schema. It is important to note that each of the 121 exchanges is actually a set of exchanges that includes individual exchanges for Request, Response, and Error Handling. A complete list of CCMS data exchanges is available on the [Integration Partners website](#)³.

1.4 Assumptions

The following is a list of current assumptions:

- Integration partners and courts have completed their LIAM process as a prerequisite to implementing data exchanges.
- Integration partners have a working proficiency with Web services and XML, and a basic understanding and knowledge of the NIEM structure and implementation concepts.

1.5 Risks

To date, there are no risks identified for this exchange.

1.6 Conventions Used in this Document

1.6.1 Exchange naming convention

During the data exchange development process, the AOC adopted a standard naming convention to describe the “action” of the exchange from the court perspective, and applied an alphanumeric categorization for various court functions. Each follows this format:

<Application>-<Interface Number><Interface Name>

² <http://niem.gov/>

³ <http://www.courts.ca.gov/partners/integration.htm>

Where:

- *Application* is CCMS
- *Interface Number* consists of code name of functional area (two or three letters (e.g., “DOJ” for Department of Justice-related data exchanges)), and a three-digit number:
 - If the first digit is “8” then CCMS is receiving the data from an integration partner.
 - If the first digit is “9” then CCMS is sending the data to an integration partner.
 - The remaining two digits identify the unique integer ID sequentially assigned to the data exchange.
- *Interface Name* is descriptive name of the data exchange.

Examples:

- CCMS-V4-DOJ802 Receive Disposition Error Report Notification
 - CCMS receives data from an integration partner.
- CCMS-V4-DOJ901 Send Initial, Subsequent Disposition Notification
 - CCMS sends data to an integration partner.
 - CCMS sends data to the integration partner.

2.0 Exchange Description

This section outlines the requirements and functional design for the FCC802 Receive Traffic School Extension Request data exchange. A trial court uses this California judicial branch XML schema-based data exchange to receive a traffic school extension request from an integration partner who is attempting to extend the date by which a case participant must complete traffic school. Integration partners for this data exchange are traffic school vendors.

On success, the response to this data exchange is returned to the integration partner indicating whether the traffic school extension request has been accepted or rejected. If the request is accepted, traffic school information is returned, (e.g., CCMS case number and new traffic school complete by date). On error, the response to this data exchange is returned to the integration partner containing a rejection indicator and reason.

2.1 Capabilities

This service provides the ability for a trial court (service provider) to **receive** a traffic school extension request from an integration partner (service consumer) who is attempting to extend the date by which a case participant must complete traffic school.

2.2 Real World Effects

This service provides the ability for an integration partner (service consumer) to **send** a traffic school extension request to a trial court (service provider) when there is a need to extend the date by which a case participant must complete traffic school.

2.3 Related Forms and Exchanges

2.3.1 Business response exchanges

All exchanges subject to a court clerk review have corresponding "business response" exchanges that describe the outcome of the court clerk's review.

- This data exchange is not subject to a clerk review; consequently, there are no business responses for this data exchange.

2.3.2 Related exchanges

The related exchanges identify associated exchanges integration partners may use to modify, update, or complete a correlated business process.

- There are no related exchanges.

2.3.3 Related forms

“Related forms” refers to forms, reports, or other documents currently used by courts and integration partners for the types of documents that may be included in this data exchange. This list is not exhaustive and is not an authoritative list of documents replaced by the data exchange; it is only for informational purposes.

- There are no related forms.

2.4 Assumptions and Dependencies

The data exchange specification package includes a data mapping specification based on the CCMS-specific definitions used in this exchange. Each integration partner is responsible for mapping or performing data translations if necessary, for all content (including coded values) sent and received using this exchange.

3.0 Primary and Alternate Information Flows

This section provides a basic description of the exchange sequence and flow between an integration partner and CCMS; it explains the primary scenario for successful delivery and receipt of data exchange content, and the “alternate” flow of information for error and exception handling scenarios. Additional diagrams and descriptions of information flows are found in the *“Data Exchange Functional Design Guidelines.”*

3.1 Primary Flow

1. An integration partner sends the traffic school extension request to the ISB.
2. The ISB receives the traffic school extension request, performs schema validation, and forwards the message to CCMS.
3. CCMS receives the message and performs business validations, per the rules outlined in [Section 6.0, Additional Business Rules and Processes](#).
4. CCMS sends a success or failure response to the ISB.
5. The ISB receives the response message, performs schema validation and forwards the response to the integration partner.
6. The integration partner receives the response and takes appropriate action.

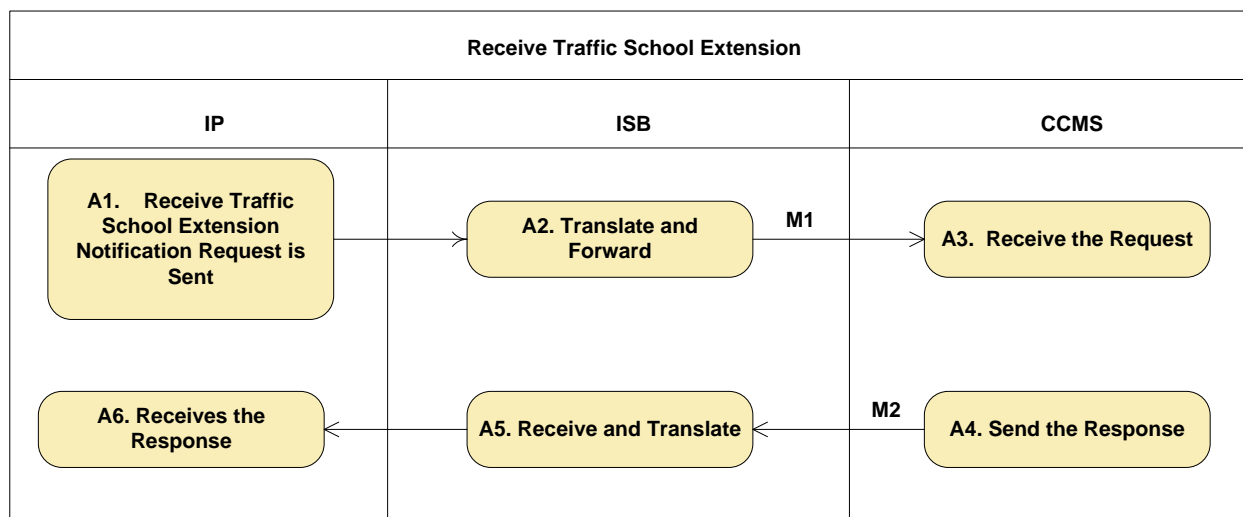


Figure 2. Court Receives Traffic School Extension Request Activity Diagram

3.2 Alternate Flow

This exchange includes three possible alternate flows, depending upon the nature of the problem.

- The ISB returned a positive acknowledgement to the source system (integration partner,) and an exception occurs within the ISB, (e.g., schema validation) before the request is forwarded to the target system (CCMS). The ISB handles the exception and sends a response (containing the failure reason) to the source system (integration partner system.)
- The ISB returned a positive acknowledgement to the source system (integration partner system), and an exception occurs when the ISB attempts to forward the request to the target system (CCMS). The ISB handles the exception and sends a response (containing the failure reason) to the source system (integration partner.)
- The ISB forwards the request to the target system (CCMS) and receives a negative acknowledgement, (e.g., syntactic data error) from the target system. The ISB handles the exception and sends a response (containing the failure reason) to the source system (integration partner system.)

3.3 Messages

A data exchange message⁴ is a complete package of information sent between the courts and an integration partner. This exchange includes two types of messages.

1. Request message
 - a. The Request message contains the traffic school extension information, (e.g., CCMS case number and participant) sent from the integration partner to the court.
2. Response messages
 - a. The Success Response message contains the traffic school extension response, (e.g., CCMS case number and new traffic school complete by date) sent to the integration partner from the court.
 - b. The Error Response message contains error and error description information (rejection indicator and reason) indicating the traffic school extension response message was not successful and corrective action is required.

⁴ As defined in the Justice Reference Architecture v1.8 February 2010.

4.0 Exchange Context

This section provides integration partners with specific information regarding the context of the exchange.

4.1 Triggering Events

An integration partner sends the trial court a traffic school extension request.

- Conditions = None

4.2 Subsequent Events

The received traffic school extension request and new traffic school completion date are posted to CCMS.

- Condition = The case participant has not exceeded the maximum number of traffic school extensions.
- Condition = Traffic school due date plus the configurable traffic school grace period on the case has not lapsed.
- Condition = The case participant must have submitted a traffic school enrollment request and been approved for traffic school.
- Condition = The request for traffic school must not have been ordered in court.

5.0 Data Exchange Errors and Exceptions

The document titled “*CCMS Data Exchange Errors*” contains all exchange specific errors that may occur between an integration partner and CCMS. It includes three sections that list error codes, names, and descriptions for each type below.

- **Transient and Non-Transient Errors** may occur while the message is processed by the ISB.
- **Functional Errors** may occur while processing messages in the ISB or CCMS.
- **Transactional Errors** may occur while processing a message in CCMS according to the Business Rule validations identified in [Section 6.0 Additional Business Rules and Processes](#).

6.0 Additional Business Rules and Processes

This section contains additional business rules and process requirements for an integration partner to successfully send or receive information from CCMS. The content of this section reflects specific rules that either cannot or are not enforced in the technical specifications that accompany on-boarding documents, specifically the mapping spreadsheets, exchange schemas, and code schemas. Integration partners must rely on this information in order to produce and consume valid messages exchanged with CCMS.

6.1 Business Rules

Table 1. Business Rules

Referenced Element	Business Rule Description
Date of Birth	Either the Participant ID or the Participant Name information is required
First Name	Either the Participant ID or the Participant Name information is required
Last Name	<ul style="list-style-type: none"> Required when participant is not an Entity/Organization Either the Participant ID or the Participant Name information is required
Middle Name	Either the Participant ID or the Participant Name information is required
Participant ID	Either the Participant ID or the Participant Name information is required
Suffix	Either the Participant ID or the Participant Name information is required

6.2 Allowable Values

This section provides additional information regarding individual allowable values for elements contained in this data exchange. Essentially, allowable values come in two forms—AOC codes or Boolean types. This section includes subsections that list the elements by type with specific instructions for each type.

6.2.1 AOC code values

This section provides the schema location for the allowable values and description of elements contained in this exchange. Table 2 identifies the element name as it appears in the mapping spreadsheet, and the name of the specific schema that contains the values and descriptions. All allowable value schemas are found by following this path in the exchange .zip file:

- FCC802/SchemaDefinitions/CAJUD/CommonEnumeration

Table 2. AOC Code Values

Element Name	Schema Name
Request	
ID Issuing State	State.xsd
Success Response	
Traffic School Status	TrafficSchoolStatus.xsd
Error Response	
Error Code	See “CCMS Data Exchange Errors” for a list of all errors.
Error Description	See “CCMS Data Exchange Errors” for a list of all errors.

6.2.2 Court configurable elements

Each local court has the ability to create, edit, and remove the allowable values for the following data elements within this exchange:

- There are no court configurable data elements

In practice, many of these values are standard across courts, but integration partners should contact their local court administrator for an authoritative list of the court-specific allowable values. These values will be contained in the Court Policy File, which describes specific court business and operational rules (e.g., hours of operation, code lists, and fee schedules) in a machine-readable format. The Court Policy File for each local court will be developed as part of the CCMS deployment of that court. Integration partners can learn more about the Court Policy File by referring to the “*Court Policy File Overview*.”

6.2.3 Indicator element allowable values

This exchange includes numerous ‘Indicator’ elements that provide additional information related to a specific condition or scenario. The following is a list of indicator elements contained in this exchange. The allowable values for each element must be either ‘Y’ = yes or ‘N’ = no. Integration partners should not rely on the exchange mapping spreadsheets for the indicator element allowable values, but rather the exchange schemas contained in the appropriate schema folder.

These schemas are the authoritative source for the indicator allowable values:

- Legacy Case Indicator

6.3 Business Processes

There are no additional business processes that impact the exchange.

6.4 Data Classification

At the time of this writing, no security classifications or restrictions to the data contained in this exchange have been identified.

6.4.1 Privacy considerations

At the time of this writing, no specific privacy considerations for the content contained in this exchange have been identified.

7.0 ISB Message Processing

7.1 Routing

The ISB performs message routing for this data exchange. Routing rules are based on the content contained in the Common Service Header, which is described in the “*CCMS Data Exchange Common Technical Requirements*.”

- No additional routing rules apply.

7.2 Message Interactions

All messages sent from the ISB are processed asynchronously in real-time. This means messages received by the trial court are validated, translated to the appropriate format, and routed to the destination immediately.

- This message is retransmitted every 10 minutes, up to three times, before being declared unsuccessful.

Refer to the “*Data Exchange Functional Design Guidelines*” for an additional description of the message interactions with the ISB and CCMS.

Appendix A. Acronyms

Table 3. Acronyms

Acronym	Name
ACCMS	Appellate Court Case Management System
AOC	Administrative Office of the Courts
CCMS	California Case Management System
CCTC	California Courts Technology Center
CEB	Common Element Block
DI	data integration
F&F	Fees and Fines
FTA	Failure To Appear
IP	integration partner
ISB	Integrated Services Backbone
LIAM	Local Integration Assessment Methodology
NIEM	National Information Exchange Model
OWSM	Oracle Web Services Management
RRA	request/reply-asynchronous
RRS	request/reply-synchronous
SDD	Service Description Document
SLA	service level agreement
SME	subject matter experts
URL	Universal Resource Locator
WSDL	Web Services Description Language
XML	eXtensible Markup Language

