



Service Description Document: CCMS Data Exchange PHX802

COURT RECEIVES DISBURSEMENT
UPDATE NOTIFICATION
JUNE 2011



ADMINISTRATIVE OFFICE
OF THE COURTS

INFORMATION SERVICES DIVISION

Judicial Council of California
Administrative Office of the Courts
Information Services Division
455 Golden Gate Avenue
San Francisco, California 94102-3688
415-865-4200
www.courts.ca.gov

Copyright © 2011 by Judicial Council of California/Administrative Office of the Courts. All rights reserved.

Except as permitted under the Copyright Act of 1976 and as otherwise expressly provided herein, no part of this publication may be reproduced in any form or by any means, electronic or mechanical, including the use of information storage and retrieval systems, without permission in writing from the copyright holder. Permission is hereby granted to nonprofit institutions to reproduce and distribute this publication for educational purposes if the copies credit the copyright holder.

Revision History

Version	Date	Author	Description of Changes
1.0.0	June 2011	M. West	First release

Reference Documents

Version	Date	Document Title	Author
9.0	June 2011	Executive Summary	Deloitte Consulting
9.0	June 2011	ISB and CCMS Data Exchange Overview	Deloitte Consulting
9.0	June 2011	Data Exchange Functional Design Guidelines	Deloitte Consulting
2.0.0	September 2011	Data Exchange Common Technical Requirements	AOC
1.0.0	September 2011	PHX802 Data Exchange Specification	Deloitte Consulting/AOC/SEARCH
9.0	July 2011	CCMS Data Exchange Errors	Deloitte Consulting
1.0	July 2010	Court Policy File Overview	AOC
N/A	September 2011	AOC Codes	AOC/SEARCH
1.0	September 2011	Local Integration Assessment Methodology (LIAM)	AOC
2.0	June 2010	LIAM Light	AOC

Table of Contents

1.0	Executive Summary	1
1.1	Purpose	1
1.2	Audience.....	2
1.3	CCMS Data Exchange Overview	3
1.4	Assumptions	3
1.5	Risks	3
1.6	Conventions Used in this Document	3
1.6.1	Exchange naming convention	3
2.0	Exchange Description	5
2.1	Capabilities	5
2.2	Real World Effects	5
2.3	Related Forms and Exchanges	5
2.3.1	Business response exchanges	5
2.3.2	Related exchanges	5
2.3.3	Related forms	6
2.4	Assumptions and Dependencies	6
3.0	Primary and Alternate Information Flows	7
3.1	Primary Flow	7
3.2	Alternate Flow	7
3.3	Messages	8
4.0	Exchange Context.....	9
4.1	Triggering Events	9
4.2	Subsequent Events.....	9
5.0	Data Exchange Errors and Exceptions	11
6.0	Additional Business Rules and Processes	13
6.1	Business Rules.....	13
6.2	Allowable Values	13
6.2.1	AOC code values	13
6.2.2	Court configurable elements	14
6.2.3	Indicator element allowable values	14
6.3	Business Processes	14
6.4	Data Classification	14
6.4.4	Privacy considerations.....	14
7.0	ISB Message Processing.....	15
7.1	Routing	15
7.2	Message Interactions	15
Appendix A.	Acronyms	17

List of Figures

Figure 1. Implementation Phases	2
Figure 2. Court Receives Disbursement Update Notification Activity Diagram	7

List of Tables

Table 1. Business Rules	13
Table 2. AOC Code Values	13
Table 3. Acronyms.....	17

1.0 Executive Summary

1.1 Purpose

The purpose of this document is to provide integration partners with descriptive information regarding the context and business processes when preparing to implement data exchanges with California's Court Case Management System (CCMS). This document details the exchange content requirements and related business requirements needed for a trial court to receive a disbursement update notification from an integration partner.

Integration partners most likely to use this data exchange include:

- County finance
- Probation – adult
- Probation – juvenile
- Trial Court Administrative Services Division

This document reflects agency business rules and policies that have a direct impact on the system interactions among court and integration partners. This is a companion to the exchange specifications, contained in the exchange Extensible Markup Language (XML) schemas and Web Service Description Language (WSDL) files, and the “*CCMS Data Exchange: Common Technical Requirements*,” and should be reviewed along with these documents when preparing for deployment. The schemas, WSDLs, and “*Common Technical Requirements*” documentation provide specific technical details regarding message structures and implementation requirements, including infrastructure, security, and deployment information. Collectively, these documents provide all information required for an integration partner to send and receive data for this exchange with CCMS.

The information contained here compiles court-specific information from a number of AOC documents and resources, including the “*CCMS Data Exchange Functional Design*,” “*CCMS Core Application Functionality*,” and the “*CCMS Technical Architecture*.” The content in this document provides integration partners with a concise, detailed explanation of data exchange content and related business processes, and includes the following topics:

- Exchange description
- Events and conditions
- CCMS business processes and rules
- CCMS data requirements
- Message patterns
- Exceptions, acknowledgements, errors
- Other descriptive information

This Service Description Document is based on the Global Justice Reference Architecture's Service Specifications Guidelines. More information about this initiative is available at <http://www.it.ojp.gov/default.aspx?area=nationalInitiatives&page=1015#RefSSPs>.

Prior to implementing data exchanges with CCMS, it is strongly advised that each integration partner participate in a readiness assessment prepared by the AOC in partnership with the courts. This assessment, called the "Local Integration Assessment Methodology (LIAM)," consists of four phases to provide both integration partners and the courts with necessary information prior to implementation activities. Figure 1 describes this process in more detail.

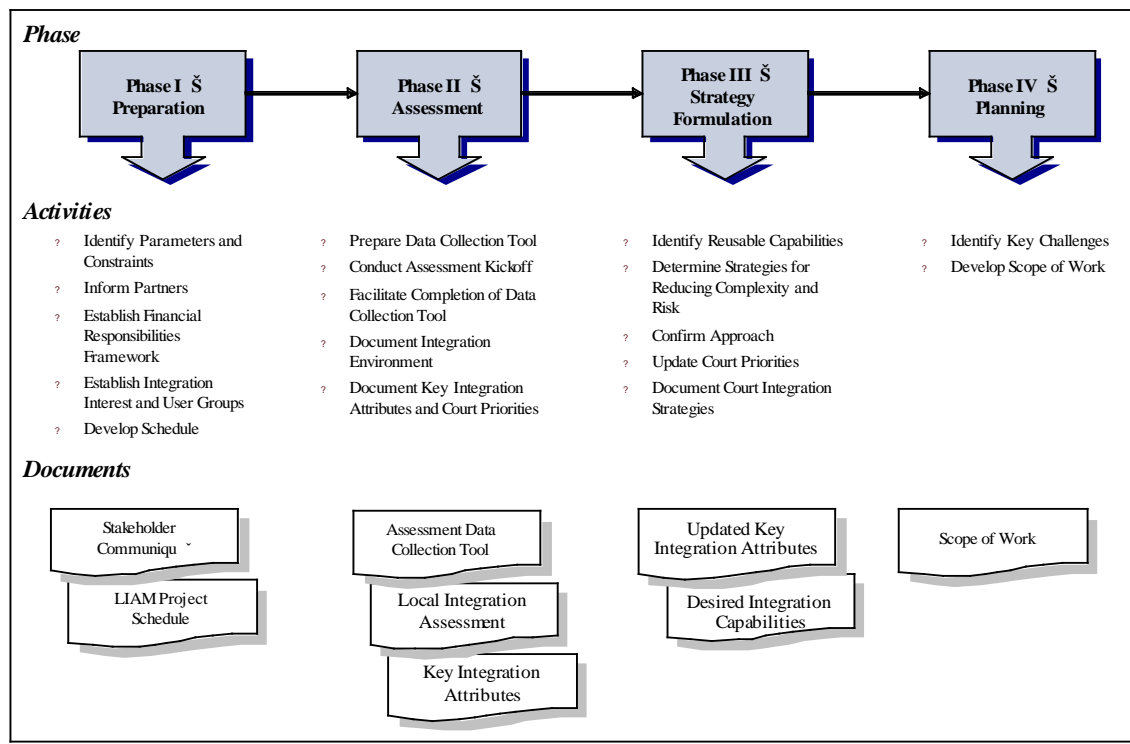


Figure 1. Implementation Phases

Alternatively, an integration partner can choose to participate in the "LIAM Light" assessment, which focuses on replacing existing electronic exchanges instead of automating new exchanges.

After CCMS is deployed with the replaced existing exchanges, integration partners may want to use the full LIAM to assess other business processes that can be automated using other exchanges.

1.2 Audience

Audiences for this document are subject matter experts (SMEs) and technical staff, who need to understand how this data exchange works in order to implement it between an integration partner and CCMS. Known audiences include:

- Integration partner CCMS Data Exchange Implementation Team

- CCMS Deployment Team
- AOC Data Integration staff, including business analysts, developers, and architects, etc.
- Integrated Services Backbone (ISB) vendors
- CCMS vendors
- Court CCMS project managers and SMEs

1.3 CCMS Data Exchange Overview

As part of the CCMS project, 121 data exchanges servicing all case types were developed to enable courts and their integration partners to exchange information using CCMS. Sixty-three exchanges are based on data exchange standards established in the [National Information Exchange Model](#)¹ (NIEM), and 58 exchanges are based on California judicial branch XML schema. It is important to note that each of the 121 exchanges is actually a set of exchanges that includes individual exchanges for Request, Response, and Error Handling. A complete list of CCMS data exchanges is available on the [Integration Partners website](#)².

1.4 Assumptions

Following is a list of current assumptions:

- Integration partners and courts have completed their LIAM process as a prerequisite to implementing data exchanges.
- Integration partners have a working proficiency with Web services and XML, and a basic understanding and knowledge of the NIEM structure and implementation concepts.

1.5 Risks

To date, there are no risks identified for this exchange.

1.6 Conventions Used in this Document

1.6.1 Exchange naming convention

During the data exchange development process, the AOC adopted a standard naming convention to describe the “action” of the exchange from the court perspective, and applied an alphanumeric categorization for various court functions. Each follows this format:

<Application>-<Interface Number><Interface Name>

¹ <http://niem.gov/>

² <http://www.courts.ca.gov/partners/integration.htm>

Where:

- *Application* is CCMS
- *Interface Number* consists of code name of functional area (two or three letters (e.g., “DOJ” for Department of Justice-related data exchanges)), and a three-digit number:
 - If the first digit is “8” then CCMS is receiving the data from an integration partner.
 - If the first digit is “9” then CCMS is sending the data to an integration partner.
 - The remaining two digits identify the unique integer ID sequentially assigned to the data exchange.
- *Interface Name* is descriptive name of the data exchange.

Examples:

- CCMS-V4-DOJ802 Receive Disposition Error Report Notification
 - CCMS receives data from an integration partner.
- CCMS-V4-DOJ901 Send Initial, Subsequent Disposition Notification
 - CCMS sends data to an integration partner.

2.0 Exchange Description

This section outlines the requirements and functional design for the PHX802 Receive Disbursement Update Notification data exchange. A trial court uses this California judicial branch XML schema-based data exchange to receive a disbursement update notification from an integration partner.

This data exchange does not include a functional success response message but integration partners may return an error message to the court if an error is encountered.

2.1 Capabilities

This service provides a trial court (service provider) with the ability to **receive** a disbursement update notification from an integration partner, including disbursement status updates, print check confirmations, cleared check notifications, and voided check notifications.

2.2 Real World Effects

This service provides integration partners (service consumers) the ability to **send** a trial court (service provider) a disbursement update notification. The following are possible situations when an integration partner may wish to use this data exchange:

- To notify a trial court that disbursement checks have been printed and mailed.
- To notify a trial court that disbursement check requests have been rejected.
- To notify a trial court that disbursement checks have cleared.
- To notify a trial court that a disbursement checks have been returned un-cashed (e.g., incorrect address, lost check).
- To notify a trial court that disbursement checks have been voided.

2.3 Related Forms and Exchanges

2.3.1 Business response exchanges

All exchanges subject to a court clerk review have corresponding “business response” exchanges that describe the outcome of the court clerk’s review.

- This data exchange is not subject to a clerk review; consequently there are no business responses for this data exchange.

2.3.2 Related exchanges

The related exchanges identify associated business exchanges integration partners may use to modify, update, or complete a correlated business process.

- There are no related exchanges.

2.3.3 Related forms

“Related forms” refers to forms, reports, or other documents currently used by courts and integration partners for the types of documents that may be included in this data exchange. This list is not exhaustive and is not an authoritative list of documents replaced by the data exchange; it is only for informational purposes. The following form is related to this exchange:

The following forms are related to this exchange:

- *FIN_AOC05 Court Receives Disbursement Status Updates from AOC Finance*: Used for AOC Finance to successfully send notification of a check’s status having changed, such as a check being voided, clearing the account, or being stale (past expiration).
- *FIN_CTY02 Court Receives Print Check Confirmation from County Auditor*: Used for the County Auditor to successfully send confirmation of check printing to the trial courts. Once the County Auditor has printed the requested checks, a confirmation is sent back to the trial courts identifying such items as check number, check print date, etc.
- *FIN_CTY03 Court Receives Cleared Check Notification from County Auditor*: Used for the County Auditor to successfully send notification of a check having cleared to the trial courts. This changes the disbursement status of the check from “Issued” to “Cleared.”
- *FIN_CTY04 Court Received Voided Check Notification from County Auditor*: Used for the County Auditor to successfully send notification to the trial court that a check was returned un-cashed to the County Auditor.

2.4 Assumptions and Dependencies

The data exchange specification package includes a data mapping specification based on the CCMS-specific definitions used in this exchange. Each law enforcement agency is responsible for mapping, or performing data translations if necessary, for all content (including coded values) sent and received through this exchange.

3.0 Primary and Alternate Information Flows

This section provides a basic description of the exchange sequence and flow between an integration partner and CCMS; it explains the primary scenario for successful delivery and receipt of data exchange content, and the “alternate” flow of information for error and exception handling scenarios. Additional diagrams and descriptions of information flows are found in the *“Data Exchange Functional Design Guidelines.”*

3.1 Primary Flow

1. An integration partner sends the disbursement update notification to the ISB.
2. The ISB receives the disbursement update notification message, performs schema validation, and forwards the message to CCMS.
3. CCMS acknowledges receipt of the message.
4. CCMS performs business validations, per the rules defined in [Section 6.0, Additional Business Rules and Processes](#). If encountered, CCMS sends the error response to the ISB.
5. The ISB receives the error message, performs schema validation, and forwards the error response message to the integration partner.
6. The integration partner receives the error response message and takes appropriate action.

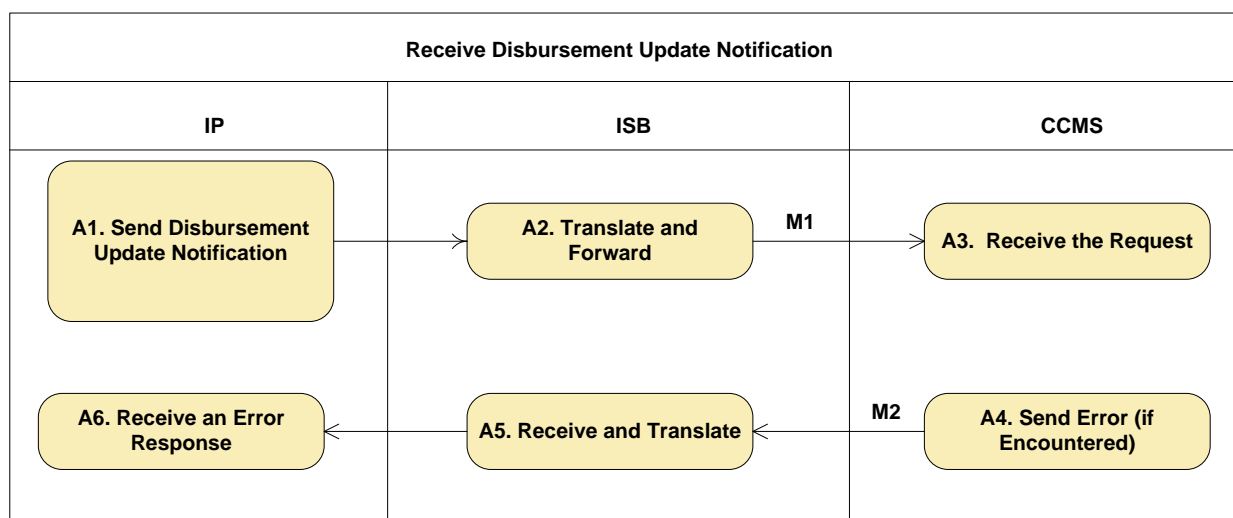


Figure 2. Court Receives Disbursement Update Notification Activity Diagram

3.2 Alternate Flow

This exchange includes three possible alternate flows, depending upon the nature of the problem.

- The ISB returned a positive acknowledgement to the source system (integration partner), and an exception occurs within the ISB, (e.g., schema validation) before the

request is forwarded to the target system (CCMS). The ISB handles the exception and sends a response (containing the failure reason) to the source system (integration partner system.)

- The ISB returned a positive acknowledgement to the source system (integration partner system), and an exception occurs when the ISB attempts to forward the request to the target system (CCMS). The ISB handles the exception and sends a response (containing the failure reason) to the source system (integration partner.)
- The ISB forwards the request to the target system (CCMS) and receives a negative acknowledgement, (e.g., syntactic data error) from the target system. The ISB handles the exception and sends a response (containing the failure reason) to the source system (integration partner system.)

3.3 Messages

A data exchange message³ is a complete package of information sent between the courts and an integration partner. This exchange includes two distinct types of messages.

1. Request message
 - a. The Request message containing the disbursement update information (e.g., CCMS case number, participant, amount, disbursement status) sent by an integration partner to the court.
2. Response message
 - a. Error Response message containing one of more errors and their description, sent by the court to the originating integration partner. This message informs the integration partner the disbursement update notification filing was not successful and corrective action is required.

³ As defined in the Justice Reference Architecture v1.8 February 2010.

4.0 Exchange Context

This section provides integration partners with specific information regarding the context of the exchange.

4.1 Triggering Events

An integration partner sends the trial court a print check confirmation.

- Condition = The *Disbursement Status* must be *Transmitted* in CCMS.

An integration partner sends the trial court the disbursement rejection.

- Condition = The *Disbursement Status* must be *Transmitted* in CCMS.

An integration partner sends the trial court the check clearance notification.

- Condition = The *Disbursement Status* must be *Issued* in CCMS.

An integration partner sends the trial court the returned/un-cashed disbursement notifications.

- Condition = The *Disbursement Status* must be *Issued* in CCMS.

An integration partner notifies the trial court that a disbursement check has been voided.

- Condition = The *Disbursement Status* must be *Issued* in CCMS.

4.2 Subsequent Events

CCMS stores the received disbursement updates and calls *Disbursement – Approve*.

- Condition = The disbursement needs to exist in CCMS.

CCMS stores the received disbursement updates and calls *Disbursement – Reject*.

- Condition = The disbursement needs to exist in CCMS.

CCMS stores the received disbursement updates and calls *Disbursement – Issue*.

- Condition = The disbursement needs to exist in CCMS.

CCMS stores the received disbursement updates and calls *Disbursement – Update Check Status*.

- Condition = The disbursement needs to exist in CCMS.

CCMS stores the received disbursement updates and calls *Disbursement – Cancel Disbursement*.

- Condition = The disbursement needs to exist in CCMS.

CCMS stores the received disbursement updates and calls *Disbursement – Update Disbursement*.

- Condition = The disbursement needs to exist in CCMS.

5.0 Data Exchange Errors and Exceptions

The document titled “*CCMS Data Exchange Errors*” contains all exchange specific errors that may occur between an integration partner and CCMS. It includes three sections that list error codes, names, and descriptions for each type below.

- **Transient and Non-Transient Errors** may occur while the message is processed by the ISB.
- **Functional Errors** may occur while processing messages in the ISB or CCMS.
- **Transactional Errors** may occur while processing a message in CCMS according to the Business Rule validations identified in [Section 6.0, Additional Business Rules and Processes](#).

6.0 Additional Business Rules and Processes

This section contains additional business rules and process requirements for an integration partner to successfully send or receive information from CCMS. The content of this section reflects specific rules that either cannot or are not enforced in the technical specifications that accompany the onboarding documents, specifically the mapping spreadsheets, exchange schemas, and code schemas. Integration partners must rely on this information to produce and consume valid messages exchanged with CCMS.

6.1 Business Rules

Table 1. Business Rules

Referenced Element	Business Rule Description
Check Clearance Date	Must be in YYYY-MM-DD format
Disbursement Date	Must be in YYYY-MM-DD format
Disbursement Interest Accrue Start Date	Must be in YYYY-MM-DD format
Disbursement Number	Required if issuing
Disbursement Principal Amount	Required if issuing
Issue Date	Required if issuing and must be in YYYY-MM-DD format
Phoenix Document ID	Required if issuing or updating a previously issued disbursement
Source Name	Allowable values are: <ul style="list-style-type: none">PhoenixCounty Auditor

6.2 Allowable Values

This section provides additional information regarding individual allowable values for elements contained in this data exchange. Essentially, allowable values come in two forms—AOC codes or Boolean types. This section includes subsections that list the elements by type with specific instructions for each type.

6.2.1 AOC code values

This section provides the schema location for the allowable values and description of elements contained in this exchange. Table 2 identifies the element name as it appears in the mapping spreadsheet, and the name of the specific schema that contains the values and descriptions. All allowable value schemas are found by following this path in the exchange .zip file:

- PHX802/SchemaDefintions/CCMS-V4/CommonEnumeration

Table 2. AOC Code Values

Element Name	Schema Name
Request	
Disbursement Check Status	DisbursementCheckStatus.xsd
Disbursement Method	DisbursementMethod.xsd
Disbursement Status	DisbursementStatus.xsd

Element Name	Schema Name
Error Response	
Error Code	See “CCMS Data Exchange Errors” for a list of all errors.
Error Description	See “CCMS Data Exchange Errors” for a list of all errors.

6.2.2 Court configurable elements

Each local court has the ability to create, edit, and remove allowable values for some data elements.

- There are no court configurable data elements.

In practice, many of these values are standard across courts, but integration partners should contact the local court administrator for a definitive and authoritative list of the court specific allowable values. These values will be contained in the Court Policy File which describes specific court business and operational rules (e.g., hours of operation, code lists, and fee schedules) in a machine readable format. At the time of this writing, the Court Policy File for each local court is under development and will be available prior to CCMS implementation. Integration partners can learn more about the Court Policy File by referring to the “*Court Policy File Overview*” document.

6.2.3 Indicator element allowable values

There are no indicator element allowable values associated with this exchange.

6.3 Business Processes

This data exchange is a batch submission to the court.

6.4 Data Classification

At the time of this writing, no security classifications or restrictions to the data contained in this exchange have been identified.

6.4.4 Privacy considerations

At the time of this writing, no specific privacy considerations for the content contained in this exchange have been identified.

7.0 ISB Message Processing

7.1 Routing

The ISB performs message routing for this exchange. Routing rules are based on the content contained in the Common Service Header, described in the “*CCMS Data Exchange: Common Technical Requirements*.”

- No additional routing rules apply.

7.2 Message Interactions

This is an asynchronous exchange; however, all messages sent to the ISB are processed in real time. This means messages received by the ISB are validated, translated to the appropriate format, and routes to the destination immediately.

- This transaction is retransmitted every 10 minutes, up to three times, before being declared unsuccessful.

Refer to the “*Data Exchange Functional Design Guidelines*” document for an additional description of the message interactions with the ISB and CCMS.

Appendix A. Acronyms

Table 3. Acronyms

Acronym	Name
ACCMS	Appellate Court Case Management System
AOC	Administrative Office of the Courts
CCMS	California Case Management System
CCTC	California Courts Technology Center
CEB	Common Element Block
DI	Data Integration
F&F	Fees and Finds
FTA	Failure To Appear
IPs	Integration Partners
ISB	Integration Services Backbone
LIAM	Local Integration Assessment Methodology
NIEM	National Information Exchange Model
OWSM	Oracle Web Services Management
RRA	Request Reply Asynchronous
RRS	Request Reply Synchronous
SDD	Service Description Document
SLA	Service Level Agreement
SME	Subject Matter Experts
URL	Universal Resource Locator
WSDL	Web Services Description Language
XML	Extensible Markup Language

