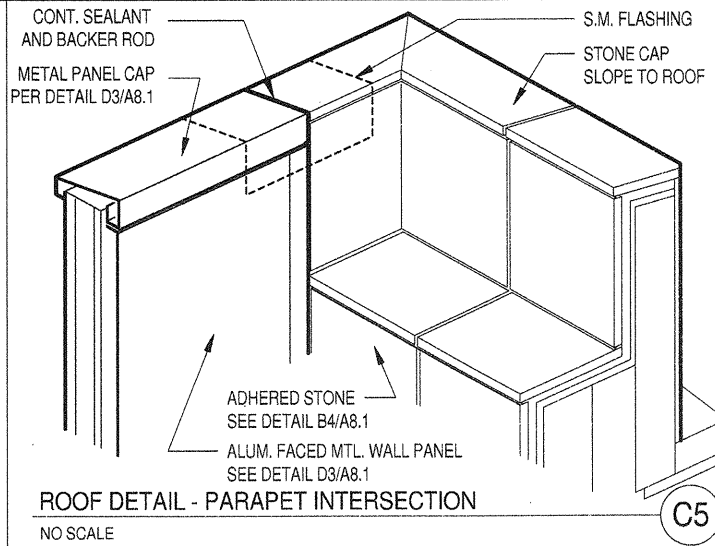
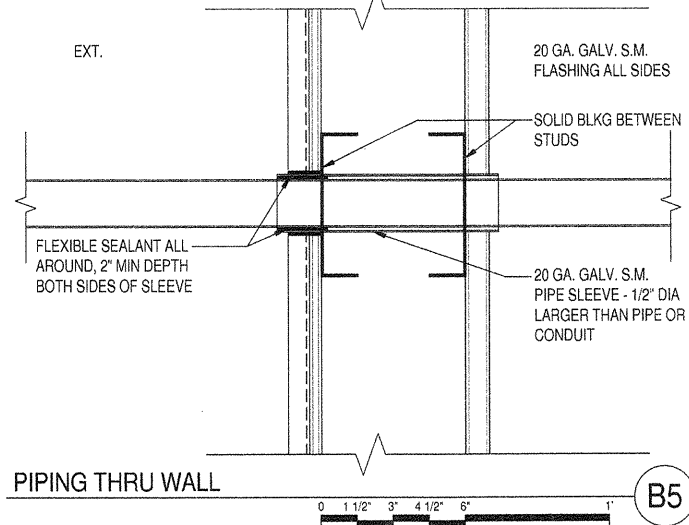
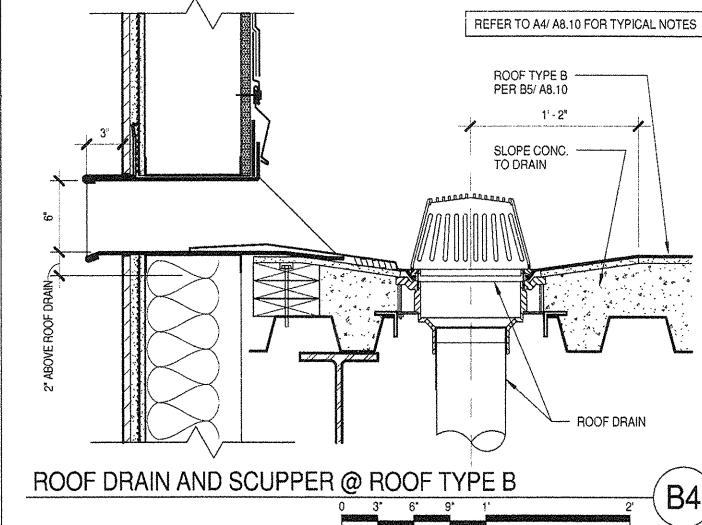
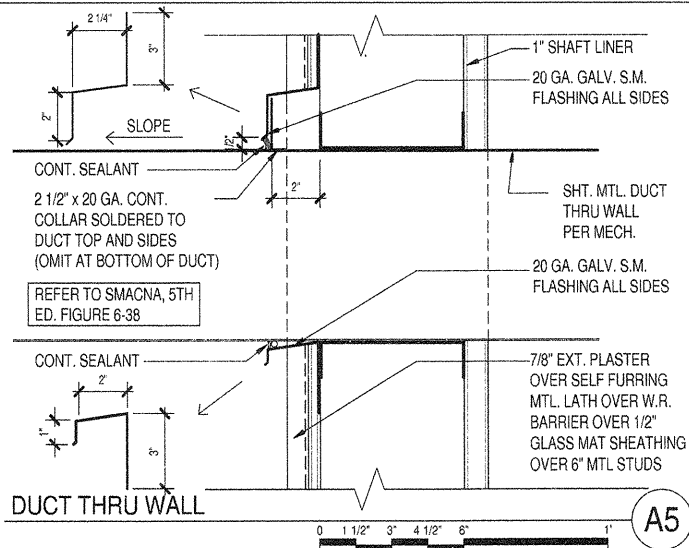
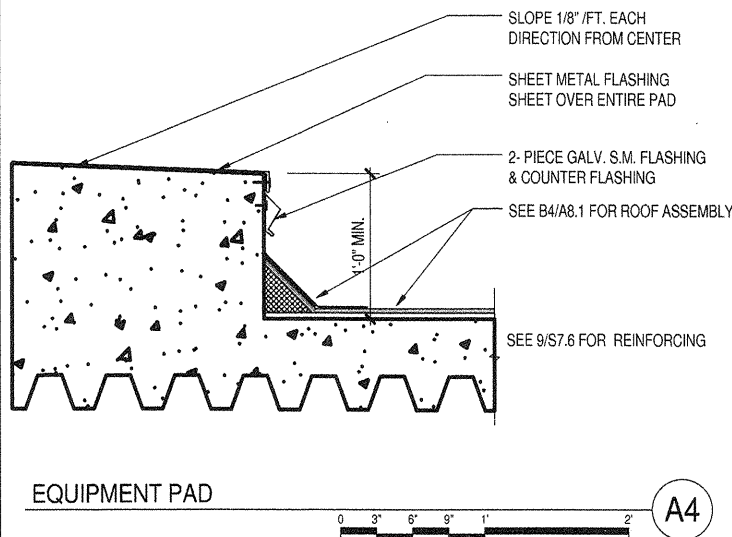
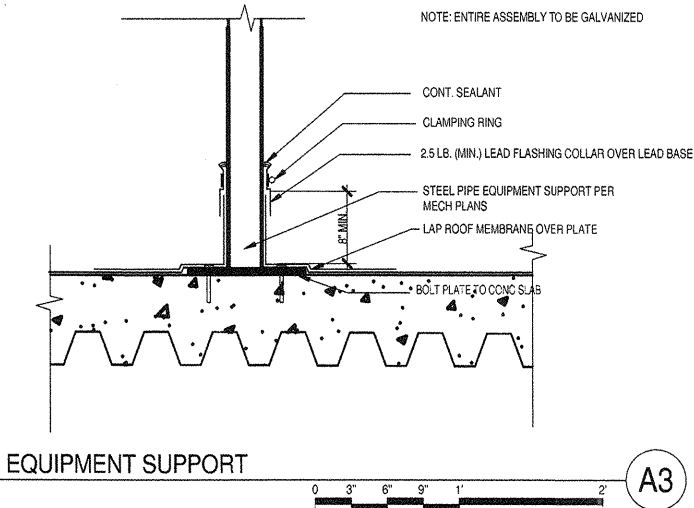
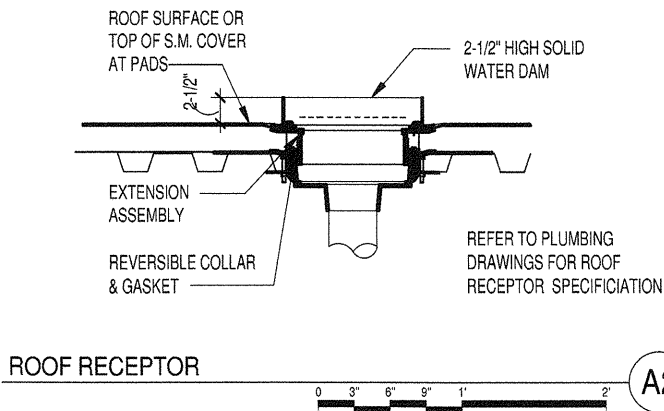
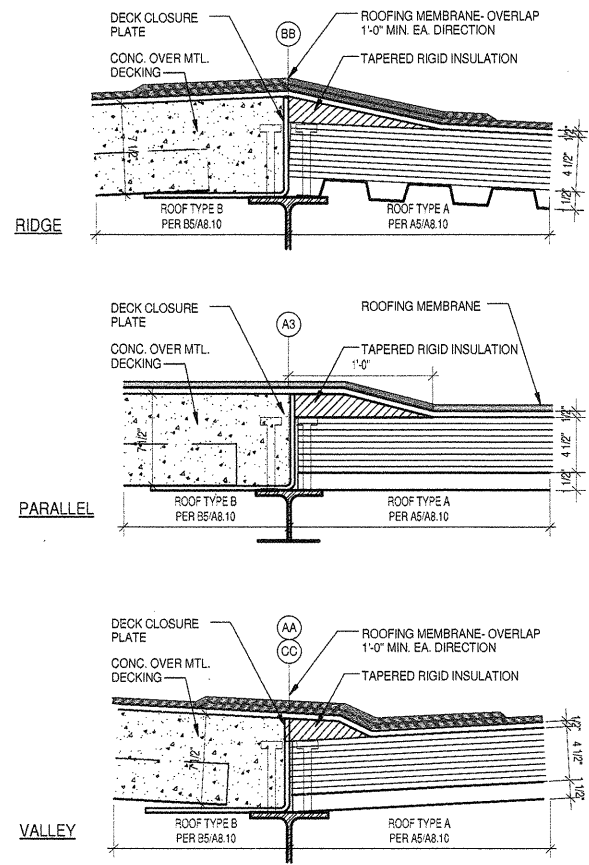


ALL IDEAS, DESIGN ARRANGEMENTS AND PLANS INDICATED OR REPRESENTED BY THIS DRAWING ARE OWNED BY, AND THE PROPERTY OF, CARRIER JOHNSON. ANY REUSE, REPRODUCTION OR USE THEREOF IS PERMITTED WITHOUT THE CONSENT OF CARRIER JOHNSON. FILING THESE DRAWINGS OR SPECIFICATIONS WITH ANY PUBLIC AGENCY IS NOT A PUBLICATION OF SAME. NO COPYING, REPRODUCTION OR USE THEREOF IS PERMITTED WITHOUT THE CONSENT OF CARRIER JOHNSON.

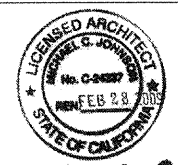


COURT OF APPEAL
FOURTH APPELLATE DISTRICT
DIVISION THREE
601 WEST SANTA ANA BOULEVARD
SANTA ANA, CA

ADMINISTRATIVE OFFICE
OF THE COURTS
OFFICE OF COURT CONSTRUCTION
AND MANAGEMENT

carrierjohnson
architecture for urban environments
1301 third avenue san diego ca 92101
phone 619.239.2353 | fax 619.239.6227

07-16-07 FOR CONSTRUCTION
ISSUES:



PROJECT NO.
4610.10
FILE NAME:
P:\4610.10\Revit\4610_central.rvt
DRAWN BY: CHECKED BY:

PLOT DATE:
TITLE:

ROOF DETAILS

DRAWING NO:

A8.9