



The Trauma Informed Court

ENGAGING YOUTH AND FAMILY WITH EFFECTIVE COMMUNICATION TO MOTIVATE CHANGE



Our Motivation

- ▶ Why should we see through a trauma informed lens?
- ▶ Jaki's Story, a perspective from the lived experience.

Delinquency & Dependency Systems

3

- ▶ Impact of trauma on youth & families
- ▶ Recognition that Systems can further or re-traumatize
- ▶ Opportunities for Change

EBP Guiding Principles

4

The science backs up what we know.

- Risk Principle (Who)**
- Need Principle (What)**
- Responsivity Principle (Matching)**
- Treatment Principle (How)**
- Fidelity Principle (How Well)**



Validated Assessment Tools

5

- ▶ CANS (Child and Adolescent Needs and Strengths)
- ▶ JAIS (Juvenile Assessment & Interventions System)
- ▶ YASI (Youth Assessment & Screening Instrument)
- ▶ SDM (Structured Decision Making)
- ▶ CFT'S (Child and Family Teams)

Judicial Engagement

6



- ▶ Link assessments and recommendations
- ▶ Lead Youth and Family Engagement
- ▶ Acknowledge "Bright Spots"
- ▶ Reduce courtroom trauma
- ▶ Focus court orders on the goals that motivate change
- ▶ Support Probation's and Child Welfare's learning curve
- ▶ Ask for data and trends in equity and disparities

7

Trauma-Status Quo	Trauma-informed/Healing
▶ Reactive	▶ Reflective
▶ Reliving/Retelling	▶ Shared Language
▶ Avoiding/Numbing	▶ Acknowledging societal Trauma/Oppression
▶ Fragmented	▶ Equity and Accountability
▶ Us v. Them	▶ Collaborative
▶ Inequity	
▶ Authoritarian	

Trauma Inducing to Trauma Reducing

8

Reflections

- ▶ Jaki's reflections
- ▶ Audience reflections



Engagement

9

- ▶ Is your system trauma informed?
- ▶ What are the strengths of your system?
- ▶ What are the needs of your system?
- ▶ Do you have a strategy to implement a paradigm change in your organization?









What works?

10

- ▶ Intake practices
- ▶ Cross-system communication
- ▶ RBL: Results based leadership tools

11

Accountability Pathway

Unaccountable for commitments to action				Accountable for commitments to action			
Unaware 	Blame others 	"I can't excuses" 	Wait & Hope 	Acknowledge reality 	Own action commitment 	Find solutions 	Make "it" happen 

12

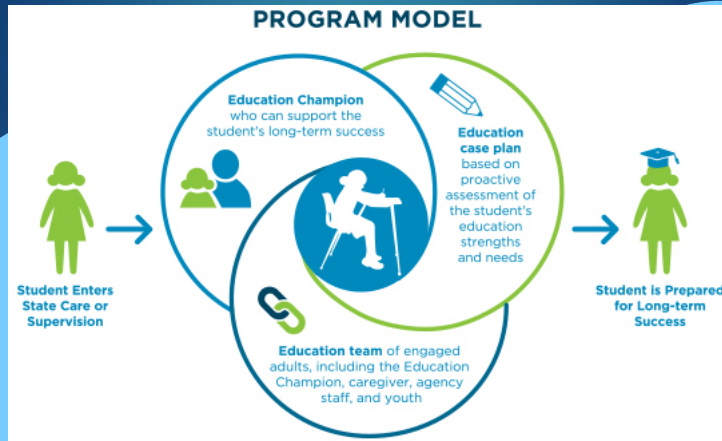
Program/Services

- ▶ FUERTE
- ▶ Evening Center
- ▶ Family Preservation Court
- ▶ FosterEd



FosterEd: Santa Cruz County Model

13



Systems Change

14

- ▶ Court Engagement Model
- ▶ Probation Engagement Model
- ▶ Dual Status Protocol
- ▶ Delinquency/Dependency System Meetings
- ▶ Shared/Cross Training

Youth Voice: Creating a Trauma Informed Courtroom Experience

15

- ▶ Did you feel you had a voice in the courtroom?
- ▶ What would have made your courtroom experience better?
- ▶ Did you think your family was engaged in the court process?
- ▶ What would have motivated you to make different choices?

Table Exercise

16

- ▶ **Topic:** Becoming Trauma Informed. **Question:** What are you doing (or will you do) to ensure you and your system partners are trauma informed?
- ▶ **Topic:** Prioritizing Youth and Family Engagement. **Question:** What are you doing (or will you do) to engage youth/family in a way that is meaningful to them?
- ▶ **Topic:** Developing a Trauma Informed Courtroom. **Question:** What can you do (or what process will you develop) to improve the courtroom experience and ensure youth/family have a voice?
- ▶ **Topic:** Systems Change. **Question:** What stakeholders need to be engaged to develop a Court Engagement Model or Systems Partnership? Who will convene the meeting?

Strong Partnership and Collaboration

17

- ▶ Essential factors in the success, sustainability, and replication of programs
- ▶ Engaging key stakeholders, community partners, subject matter experts, establishing an advisory group to provide oversight
- ▶ Strengthening capacity and linkages between systems in order to create a continuous system of services
- ▶ Communication and information sharing
- ▶ Leveraging resources and improving outcomes

Contact Information

18

Rebecca Connolly
Juvenile Judge, Dependency
Santa Cruz Superior Court
Rebecca.connolly@santacruzcourt.org

Valerie Thompson
Assistant Chief Probation Officer
Santa Cruz County Probation Department
Valerie.thompson@santacruzcounty.us

Cheryl Bonacci
Program Director, Anti-recidivism Coalition
cbonacci@antirecidivism.org

Kim Corneille
FosterEd Project Lead
kcorneille@santacruzcoe.org