

WHY DO I NEED TO KNOW ABOUT SDM?

- AS A SOCIAL WORKER
- AS A DEPENDENCY ATTORNEY



WHAT SDM IS NOT:

- 1) SUBSTITUTE FOR KNOWLEDGE OF THE LAW
- 2) SUBSTITUTE FOR COMMON SENSE
- 3) SUBSTITUTE FOR GOOD SOCIAL WORK



SAFETY, RISK, FSNA AND REASSESSMENT TOOLS

- A RIGOROUS BALANCED ASSESSMENT CAN HELP
- STRUCTURED DECISION MAKING TOOLS ARE BASED ON UNDERSTANDING THE HISTORY OF THE THINGS THAT OVER TIME CONTRIBUTE TO CHILD MALTREATMENT AND THOSE THINGS THAT CAN SUPPORT PARENT BEHAVIORS THAT KEEP CHILDREN SAFE OVER TIME.
- HELP WITH TAKING OUT BIAS AND BEING FOCUSED ON THE RIGHT THINGS.

HOW DOES BIAS ENTER INTO CHILD WELFARE DECISION-MAKING?



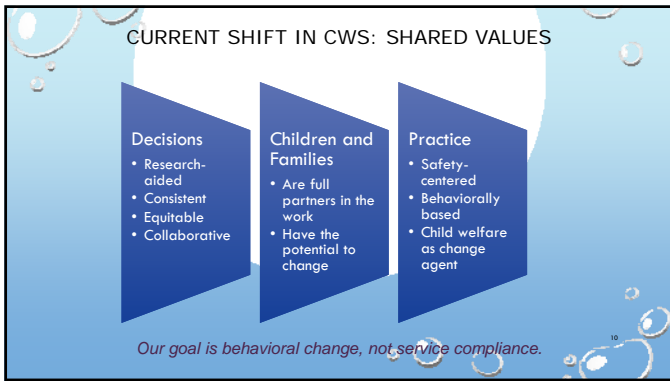
GUIDANCE FROM DECISION-SUPPORT TOOLS

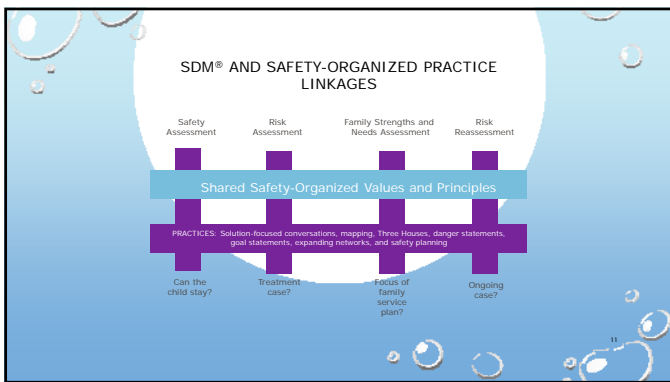
- The SDM assessments help increase equity and consistency in our work and bring the best of research to key decisions.
- They provide guidance for key decisions across our work with families.
- **"Guidance" is not the same as "ordered."** You should always consider the perspectives of your supervisor, your team -- plus your own -- when making important decisions.

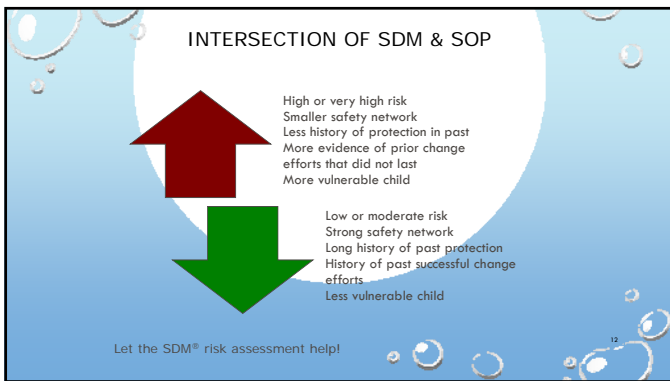


WHERE'S THE OVERRIDE?









WHERE IT FITS - SAFETY-ORGANIZED PRACTICE

GOOD WORKING RELATIONSHIPS


- Solution-focused interviewing
- Strategies for interviewing children

CRITICAL THINKING

- Mapping
- Structured Decision Making® (SDM) assessments

ENHANCING SAFETY

- Harm and danger statements
- Well-formed goals
- Building safety networks
- Collaborative planning





ORIENTING FAMILIES TO THE REUNIFICATION PROCESS

- EXPLAIN THE PROCESS (WHY, WHAT, HOW).
- REVIEW AND CLARIFY THE HARM/DANGER STATEMENTS.
- REVIEW AND CLARIFY THE SAFETY GOAL.
- TALK WITH FAMILIES ABOUT ...

Demonstrating Safety	Developing the Network	Reunification Reassessment
<ul style="list-style-type: none"> • Think together: how can the parent demonstrate acts of protection during this time? 	<ul style="list-style-type: none"> • Who cares about the child and parent? • How can we get them involved? • Share the danger statements and safety goals. 	<ul style="list-style-type: none"> • Starting risk level • Progress toward goals • Actions during visits • Changes in safety


SDM TOOLS

- **HOTLINE TOOL** – SCREENING FOR APPROPRIATENESS OF A CHILD ABUSE/NEGLECT REPORT FOR RESPONSE – DONE AT TIME OF PHONE CALL, IN-PERSON OR WRITTEN REPORT – COMMUNITY RESPONSE? IF CWS RESPONSE HOW QUICKLY? 3 PATHS – IMMEDIATE (W/IN 24 HOURS) 10 DAY, EVALUATE OUT





- **SAFETY ASSESSMENT** – (THERE ALREADY –ALREADY HAPPENED = HARM) ASSESS HOUSEHOLD FOR SAFETY THREATS USING CURRENTLY AVAILABLE DATA – HAVE TO READ DEFINITIONS AND SHOW/WRITE BEHAVIOR SPECIFIC THAT HAS BEEN DONE (PARENT BEHAVIOR ON CHILD) ENGAGE AND ASK FAMILY BUT END OF THE DAY IT'S CWS.

SDM TOOLS



- **RISK ASSESSMENT –**
 RISK ASSESSMENT IDENTIFIES FAMILIES WITH LOW, MODERATE, HIGH OR VERY HIGH PROBABILITIES OF FUTURE ABUSE OR NEGLECT –
 BASED ON RESEARCH ON FAMILIES WITH SUBSTANTIATED ABUSE OR NEGLECT THAT EXAMINED THE RELATIONSHIPS BETWEEN FAMILY CHARACTERISTICS AND THE SUBSEQUENT OUTCOMES OF SUBSTANTIATED ABUSE AND NEGLECT.
 NOT A PREDICTION JUST “MORE OR LESS LIKELY” GIVEN THE CHARACTERISTICS. PRIOR CWS PATTERN AND HISTORY ARE PART OF IT.
 HELP DEFINES SAFETY GOAL



SDM TOOLS

- **FSNA – FAMILY STRENGTHS AND NEEDS ASSESSMENT (NOT USED BY ALL COUNTIES) –** PRIORITIZES BEHAVIORS AND SAFETY TOOLS MOST HELPFUL TO FOCUS ON TO HELP THE FAMILY. IDENTIFIES STRENGTHS AND SAFE BEHAVIORS TO SUPPORT OVER TIME.
- **RISK REASSESSMENT –** (USED FOR IN-HOME/FAMILY MAINTENANCE CASES--AT A MINIMUM, EACH ONGOING FAMILY IS REVIEWED IN CONJUNCTION WITH EACH JUDICIAL REVIEW HEARING (AT LEAST EVERY SIX MONTHS) TO ASSESS PROGRESS TOWARD OBJECTIVES AND LONG-TERM GOALS INCLUDING REDUCTION OF RISK AND NEEDS. A REASSESSMENT CAN BE DONE EARLIER IF THERE HAVE BEEN SIGNIFICANT CHANGES THAT AFFECT RISK AND NEEDS. SIMILAR TO INITIAL RISK ASSESSMENT, THE RISK ASSESSMENT DETERMINES WHETHER THE CASE SHOULD REMAIN OPEN OR CLOSED. FOR CASES THAT WILL REMAIN OPEN, THE REASSESSMENT INCLUDES UPDATING THE TREATMENT PLAN BASED ON CURRENT NEEDS AND STRENGTHS AND SETS NEW CONTACT GUIDELINE LEVELS.
- **REUNIFICATION REASSESSMENT—**(USED TO GUIDE DECISION MAKING WHEN CHILD IS OUT OF THE HOME TO DETERMINE WHETHER RETURN SHOULD OCCUR OR TERMINATION OF REUNIFICATION SERVICES)

“SDM IS ONLY A TOOL”

.....but if we don't use it, its
