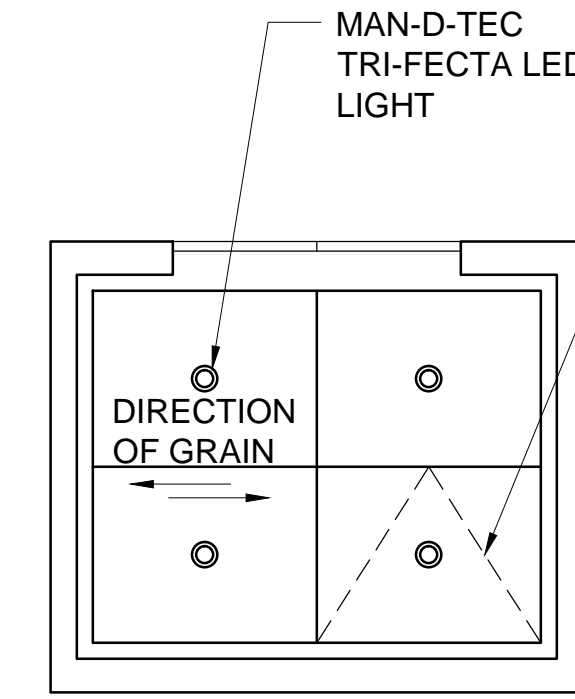
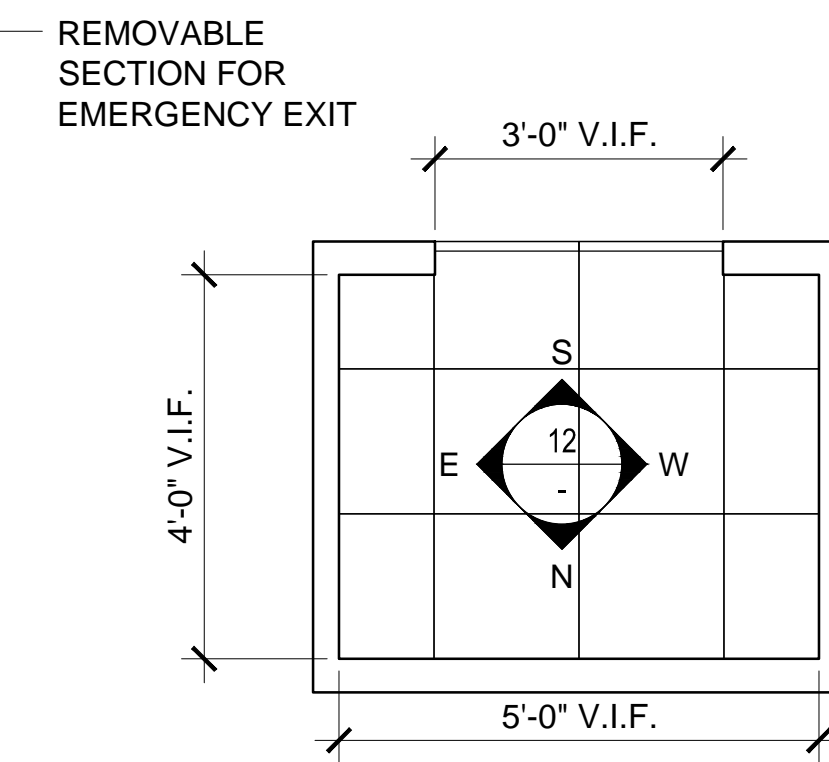


12 JUDGES ELEVATOR 5 INTERIOR CAB ELEVATIONS
1/2" = 1'-0"



6 JUDGES ELEVATOR 5 RCP
1/2" = 1'-0"



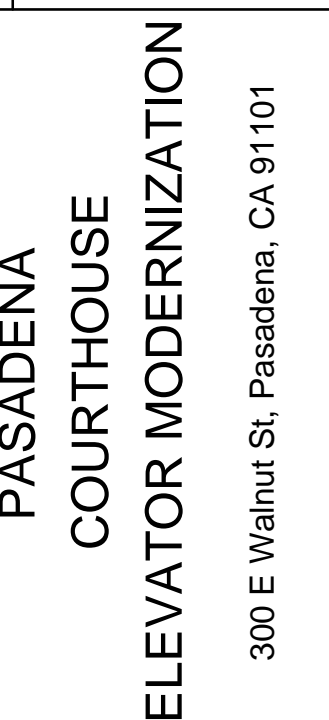
3 JUDGES ELEVATOR 5
1/2" = 1'-0"

NOTE: RETAIN EXISTING ELEVATOR PLATFORM AND SHELL



REV	DATE	DESCRIPTION
06/16/2016	100% SD	
07/14/2016	100% DD	
08/18/2016	50% CD	
10/31/2016	90% CD	
12/12/2016	REVISED 90% CD	
04/03/2017	100% CD/CONFORMED SET	
04/24/2017	BID SET	
05/09/2017	ADDENDUM 1	

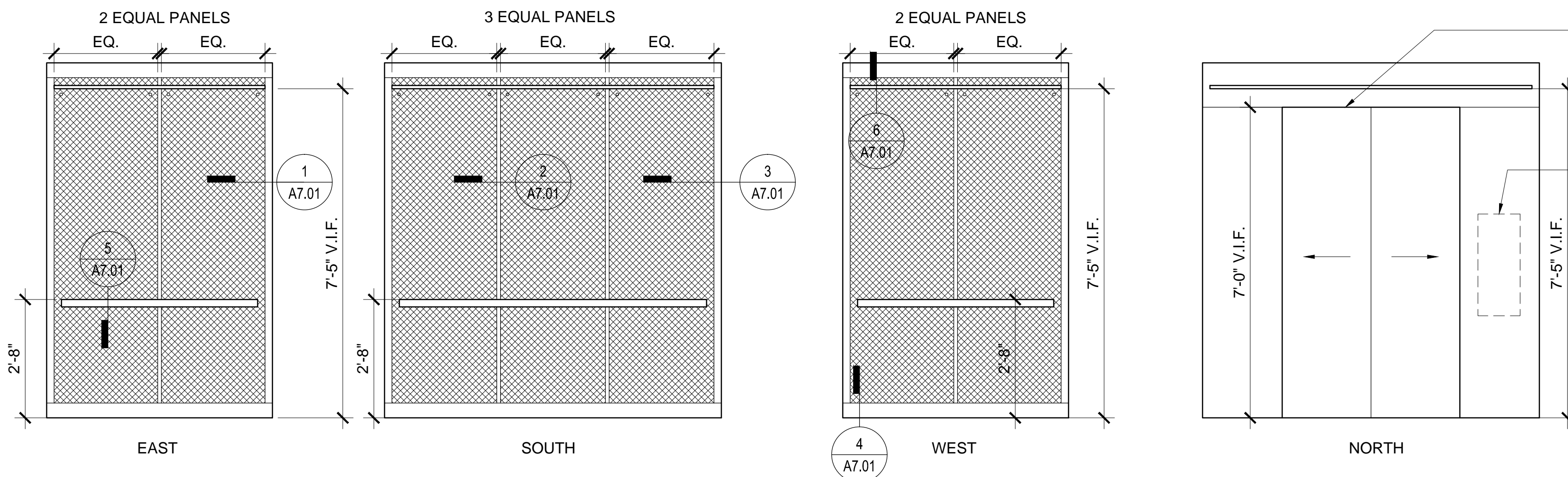
PASADENA COURTHOUSE ELEVATOR MODERNIZATION
300 E Walnut St, Pasadena, CA 91101



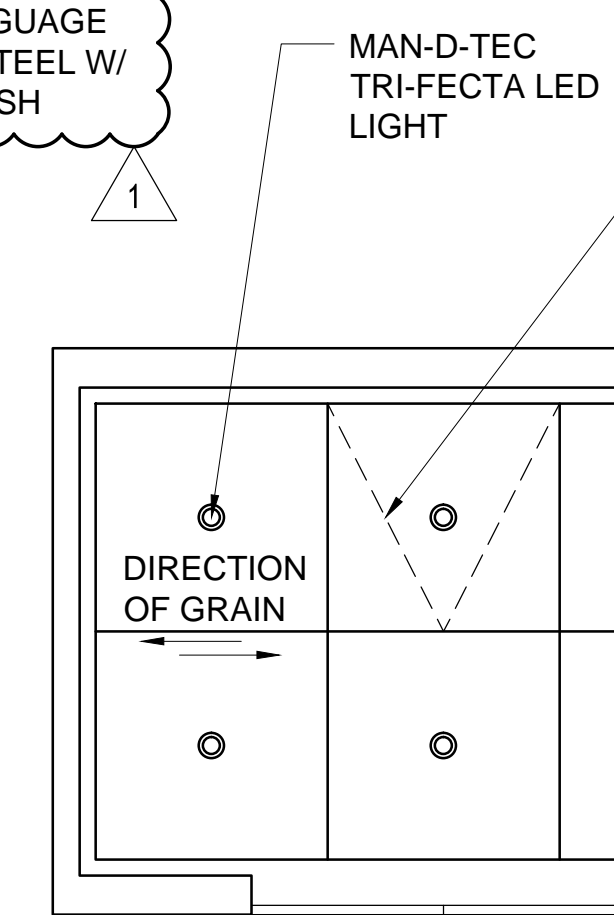
NOTE:

RETAIN EXISTING CAB FINISHES ON CUSTODY ELEVATORS #4 AND #6. PROVIDE NEW DOORS, 18-GUAGE 304 STAINLESS STEEL W/ #4 BRUSHED FINISH.

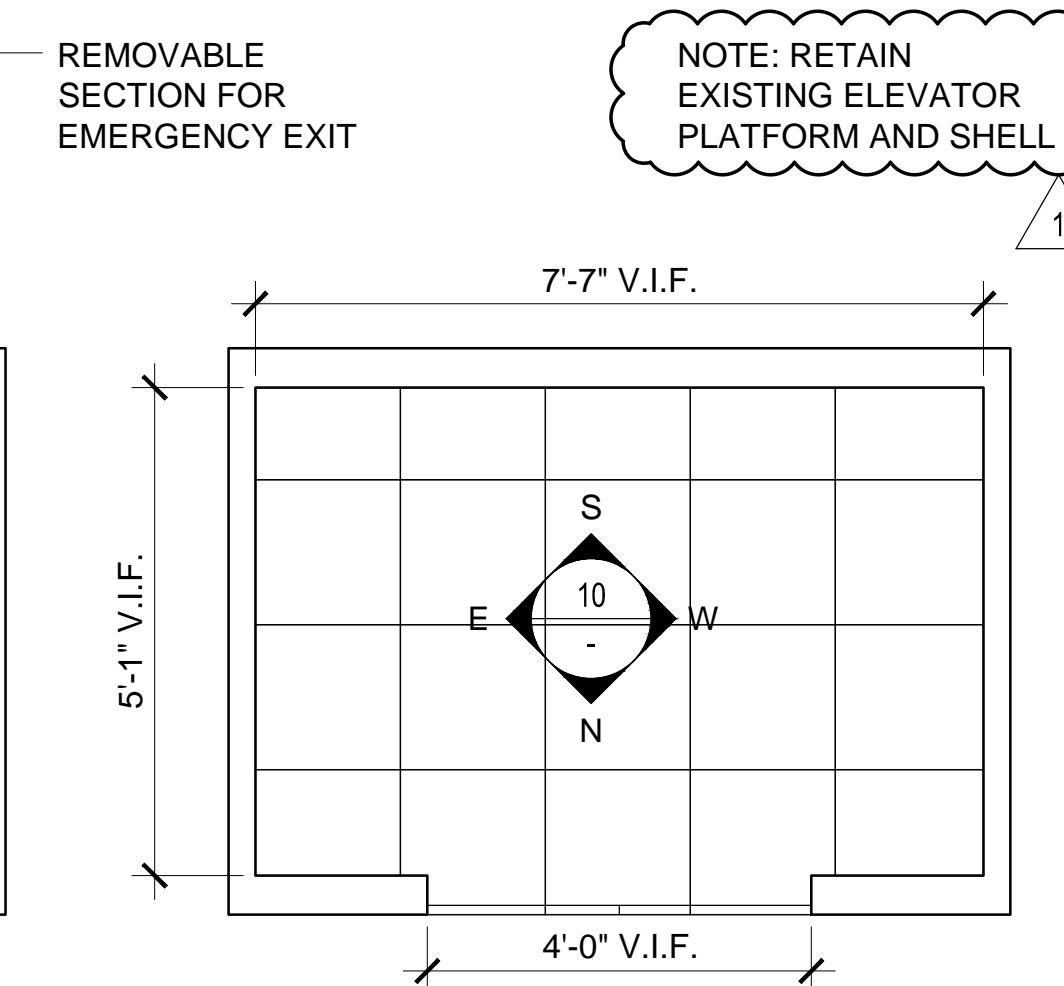
REPAINT EXISTING CAB FINISH ON ANNEX ELEVATOR #7. PROVIDE NEW DOORS, 18-GUAGE 304 STAINLESS STEEL W/ #4 BRUSHED FINISH.



10 PUBLIC ELEVATORS 1, 2, & 3 INTERIOR CAB ELEVATIONS
1/2" = 1'-0"



4 PUBLIC ELEVATORS 1, 2, & 3 RCP
1/2" = 1'-0"



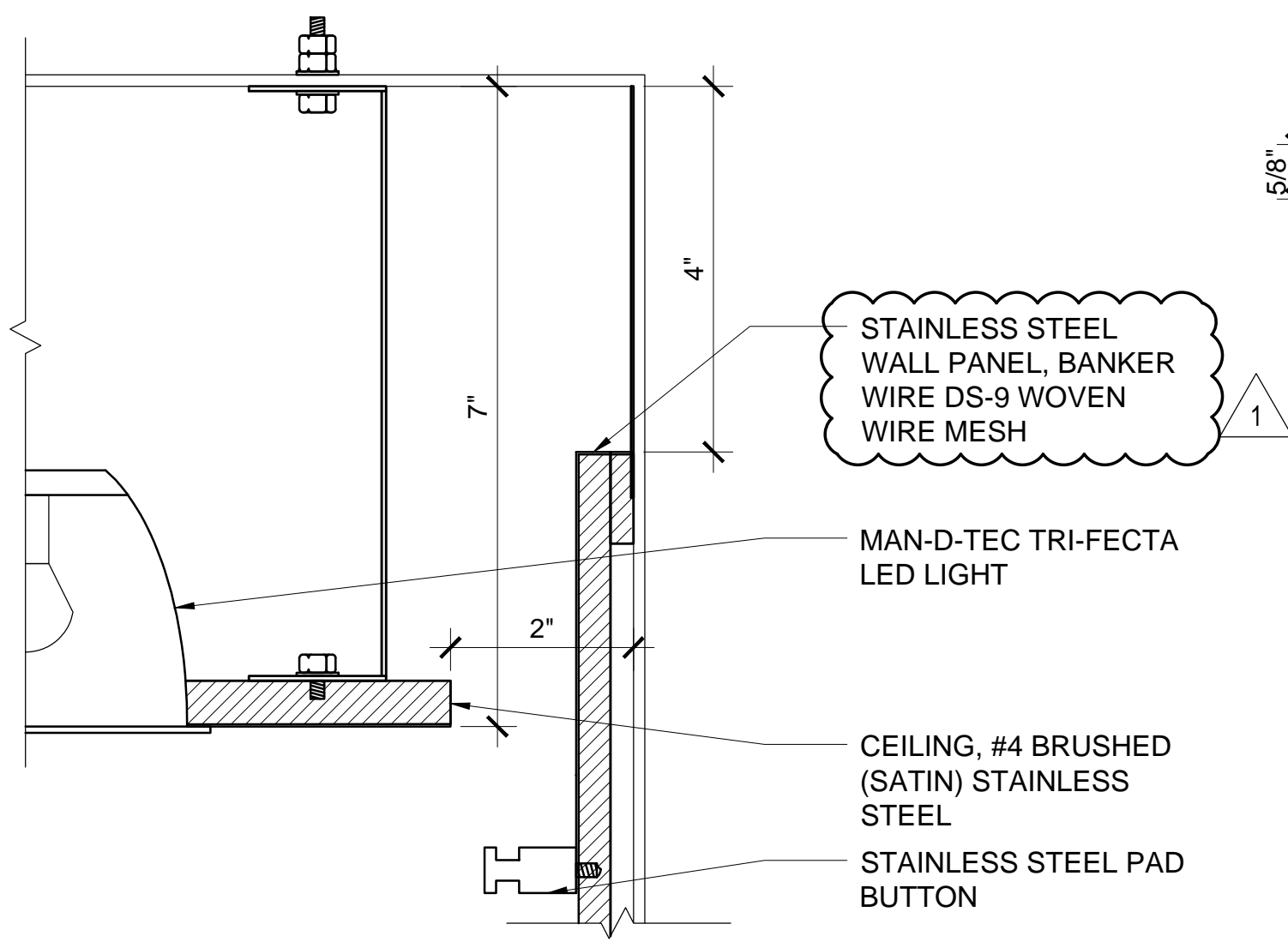
1 PUBLIC ELEVATORS 1, 2, & 3
1/2" = 1'-0"

NOTE: RETAIN EXISTING ELEVATOR PLATFORM AND SHELL

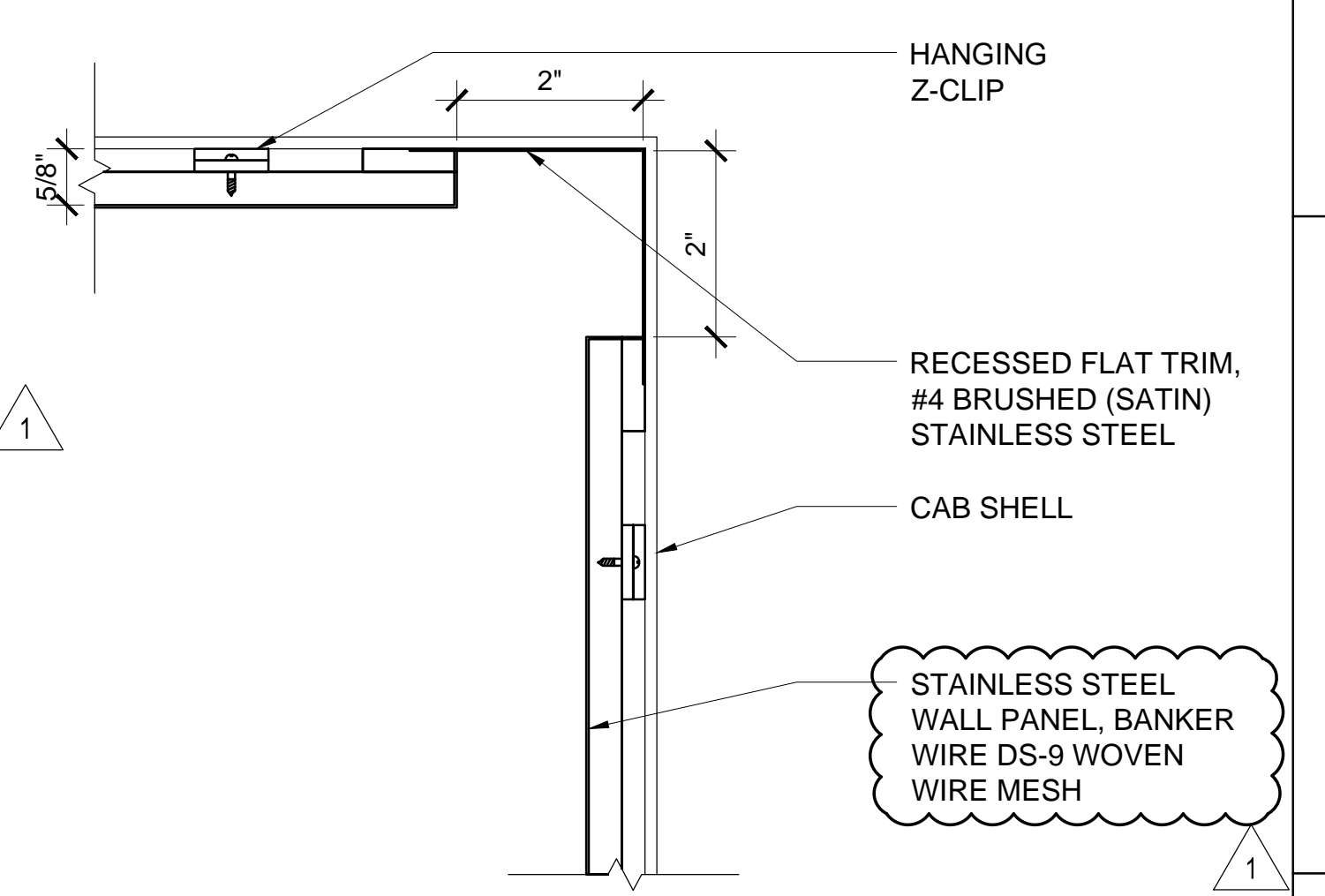


ELEVATOR DETAILS
1/2" = 1'-0"

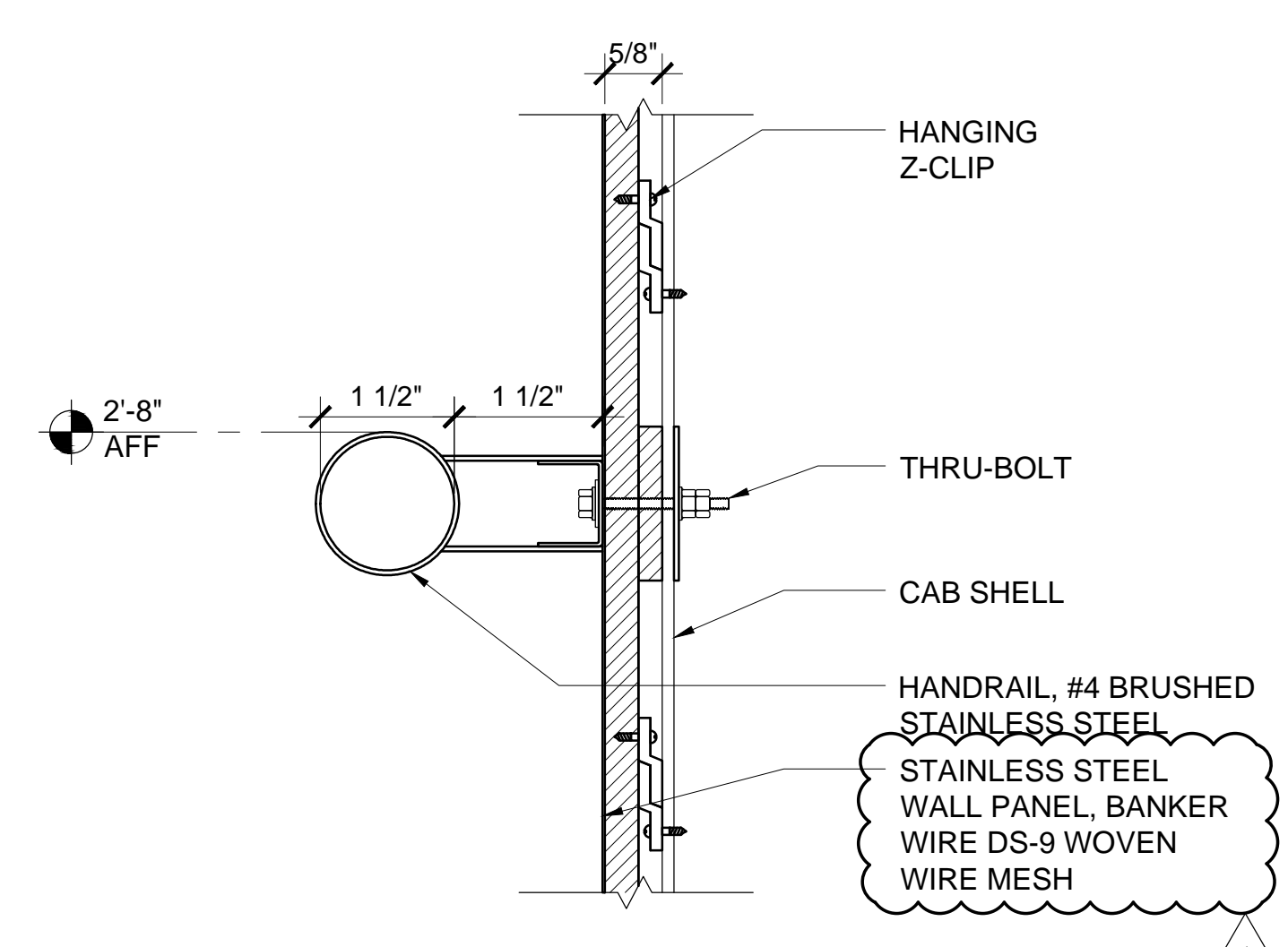
A5.01



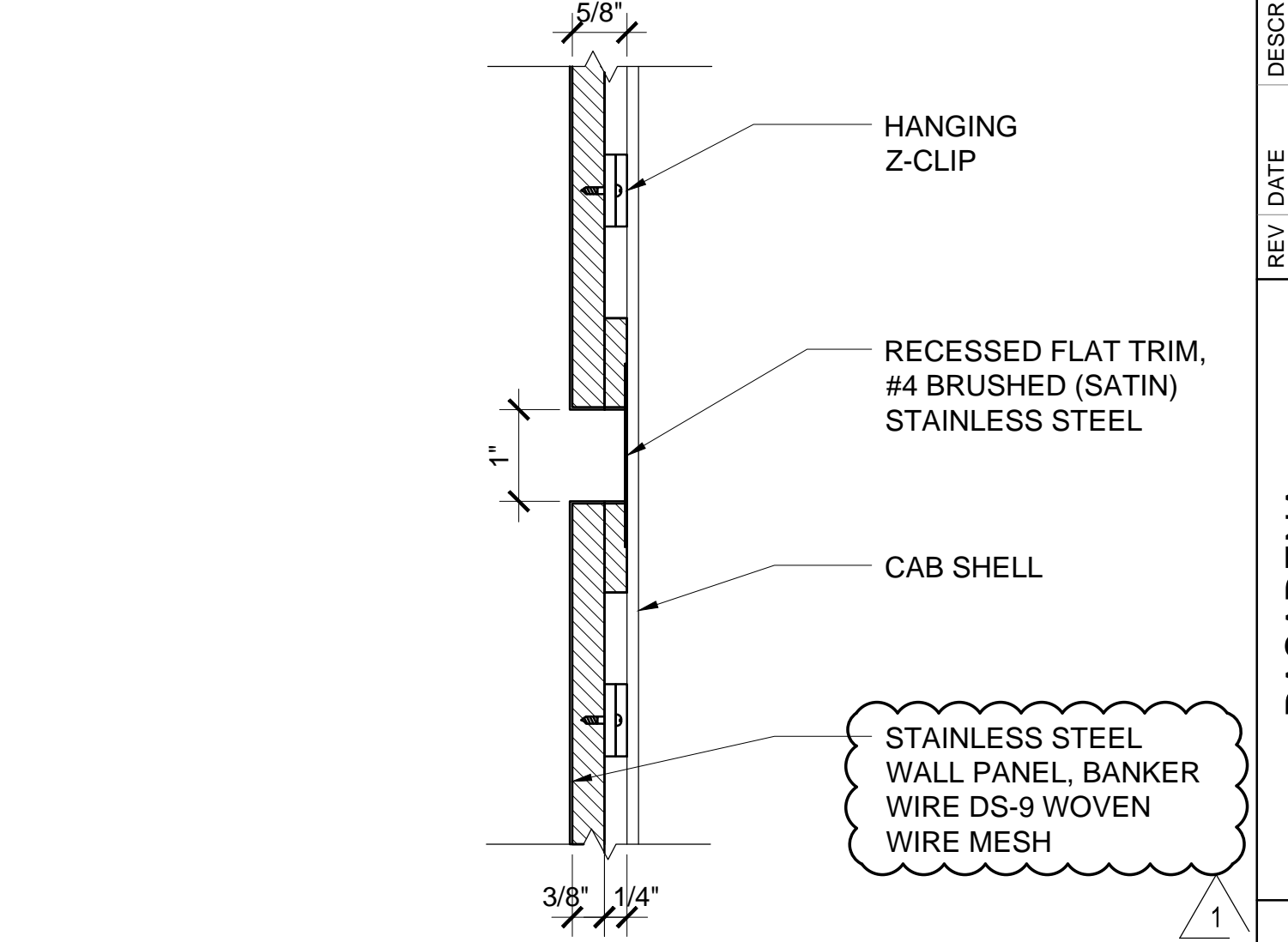
6 CEILING SECTION - PUBLIC CABS
 6" = 1'-0"



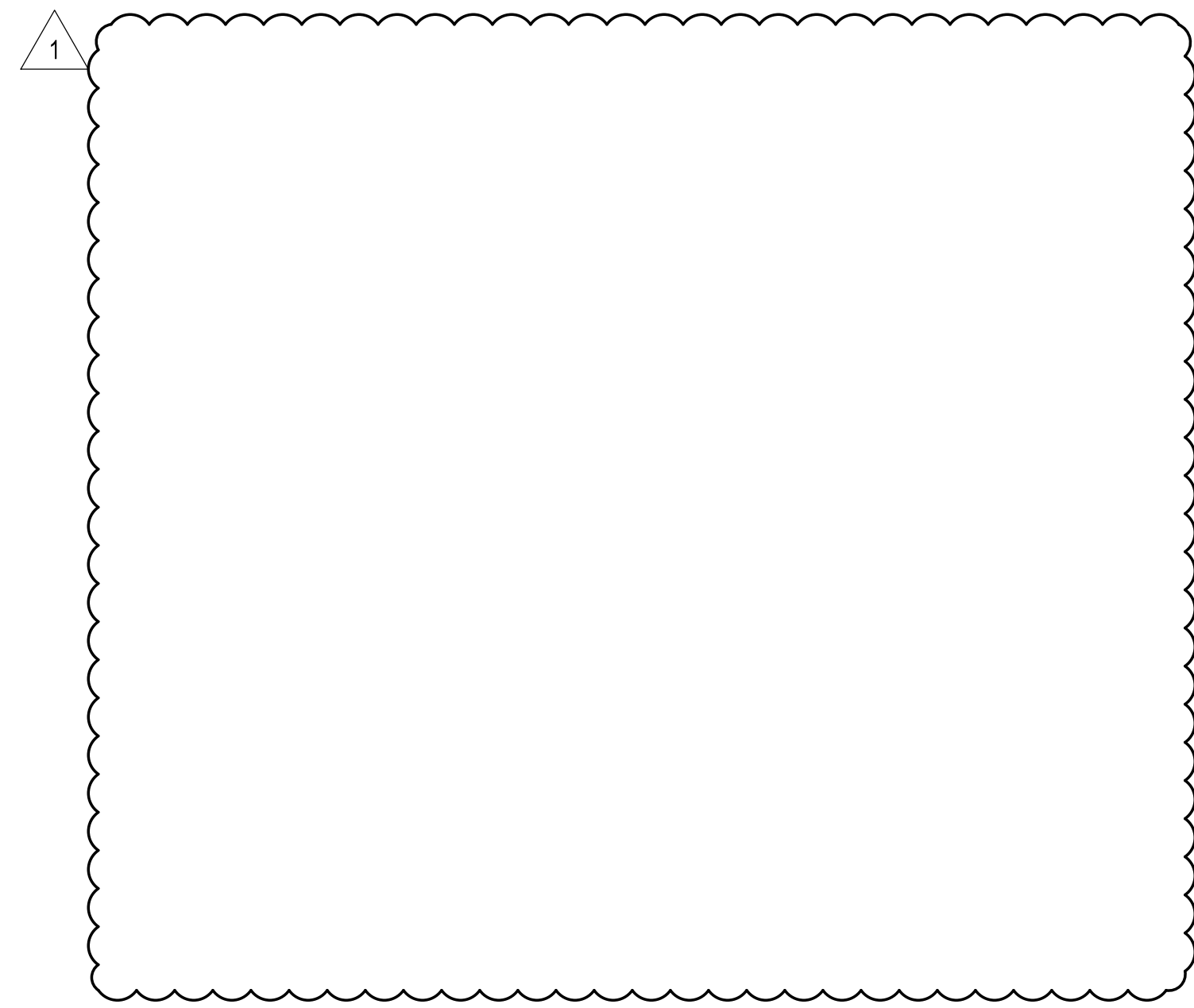
3 CORNER REVEAL
 6" = 1'-0"



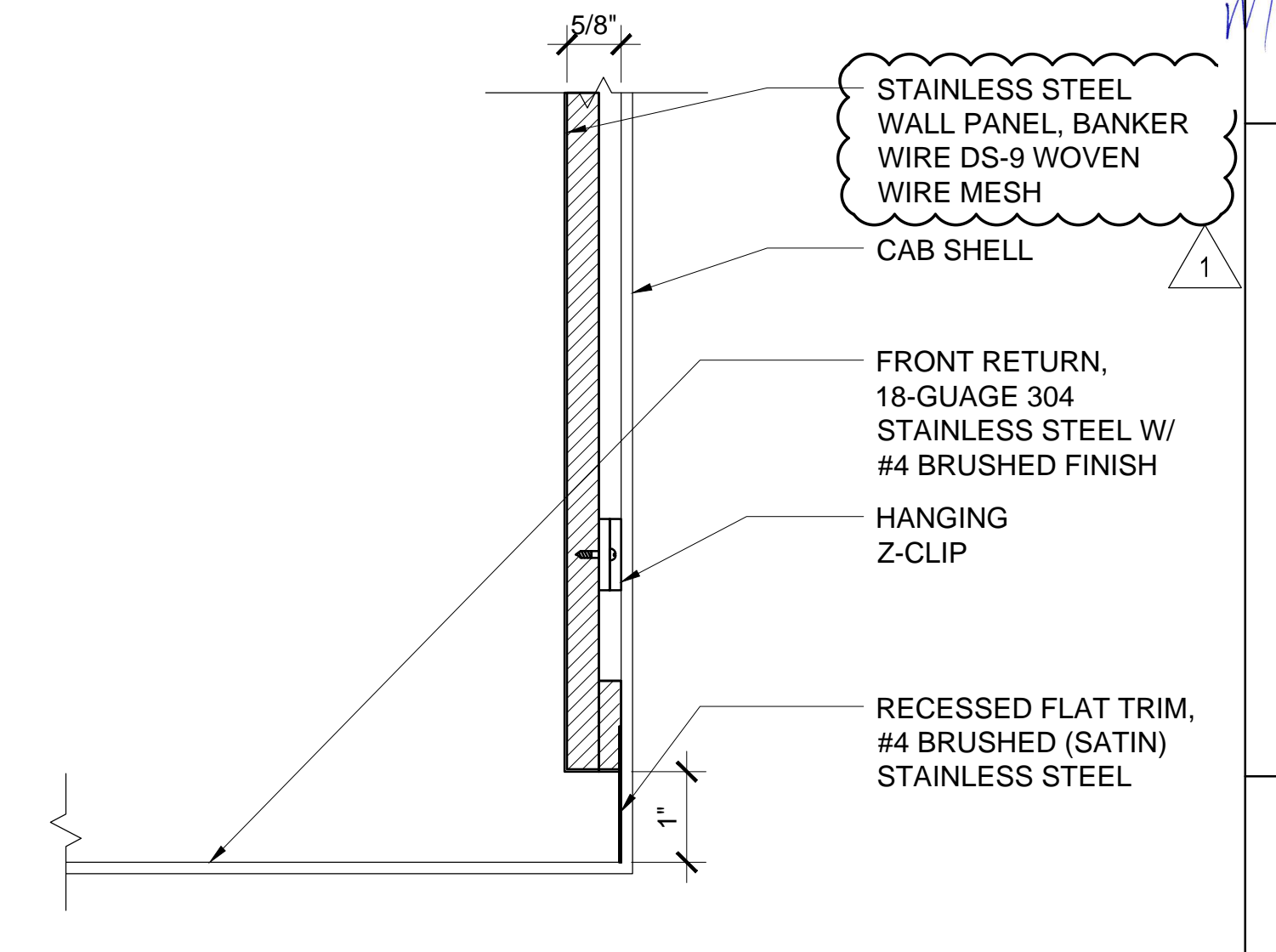
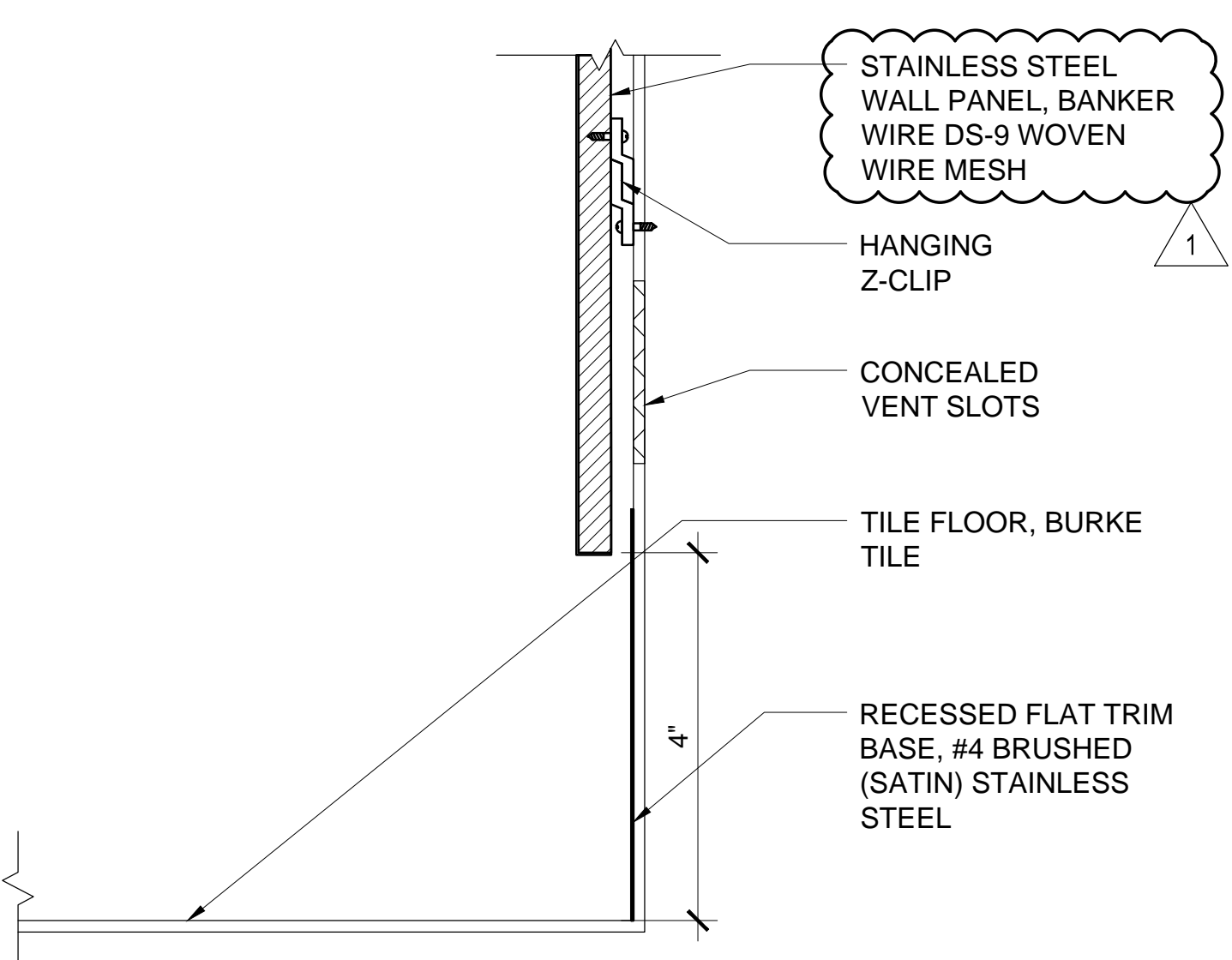
5 HANDRAIL - PUBLIC CABS
 6" = 1'-0"



2 REVEAL
 6" = 1'-0"



4 BASE
 6" = 1'-0"



1 FRONT REVEAL
 6" = 1'-0"

REV	DATE	DESCRIPTION
		100% SD
		100% DD
		50% CD
		90% CD
		REVISED 90% CD
		100% CD/CONFORMED SET
		BID SET
		ADDENDUM 1
		06/16/2016
		07/14/2016
		08/18/2016
		10/31/2016
		12/12/2016
		04/03/2017
		04/24/2017
		05/09/2017

PASADENA
 COURTHOUSE
 ELEVATOR MODERNIZATION
 300 E Walnut St, Pasadena, CA 91101

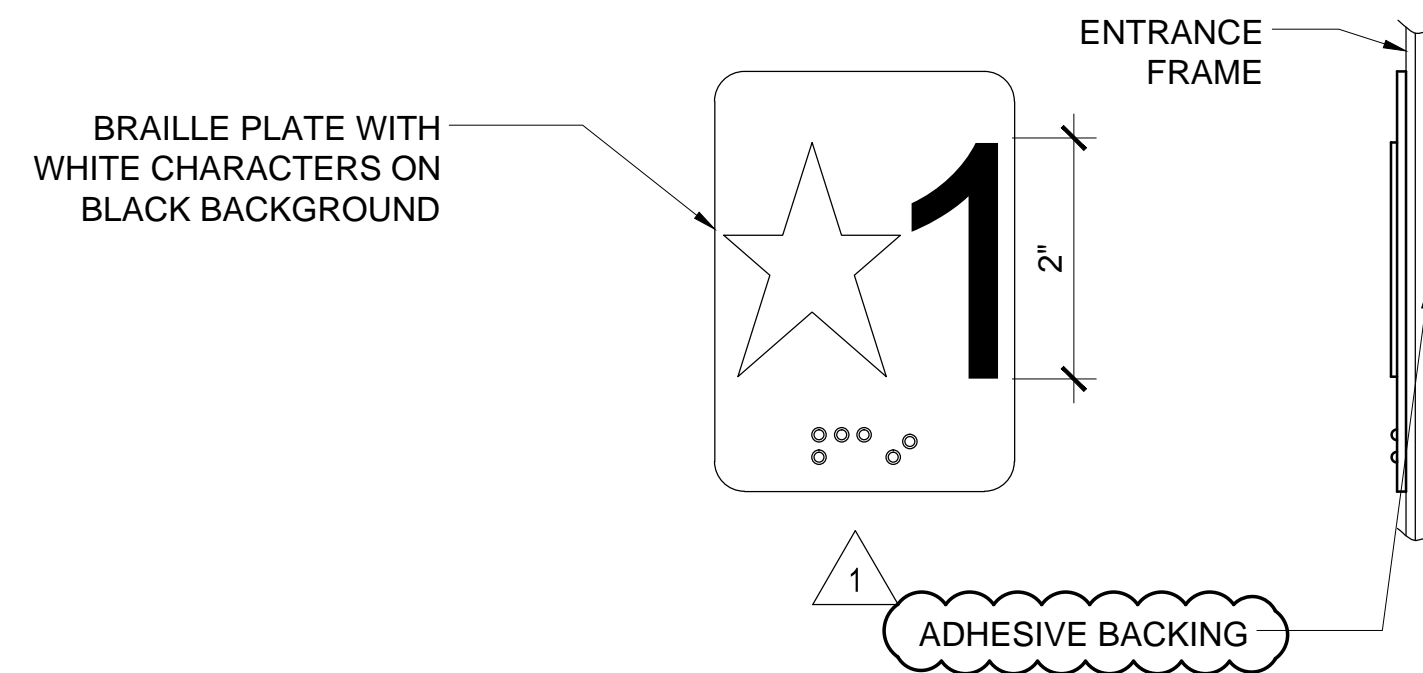


ELEVATOR DETAILS
 1/2" = 1'-0"

A7.01

HALL BRAILLE PLATES

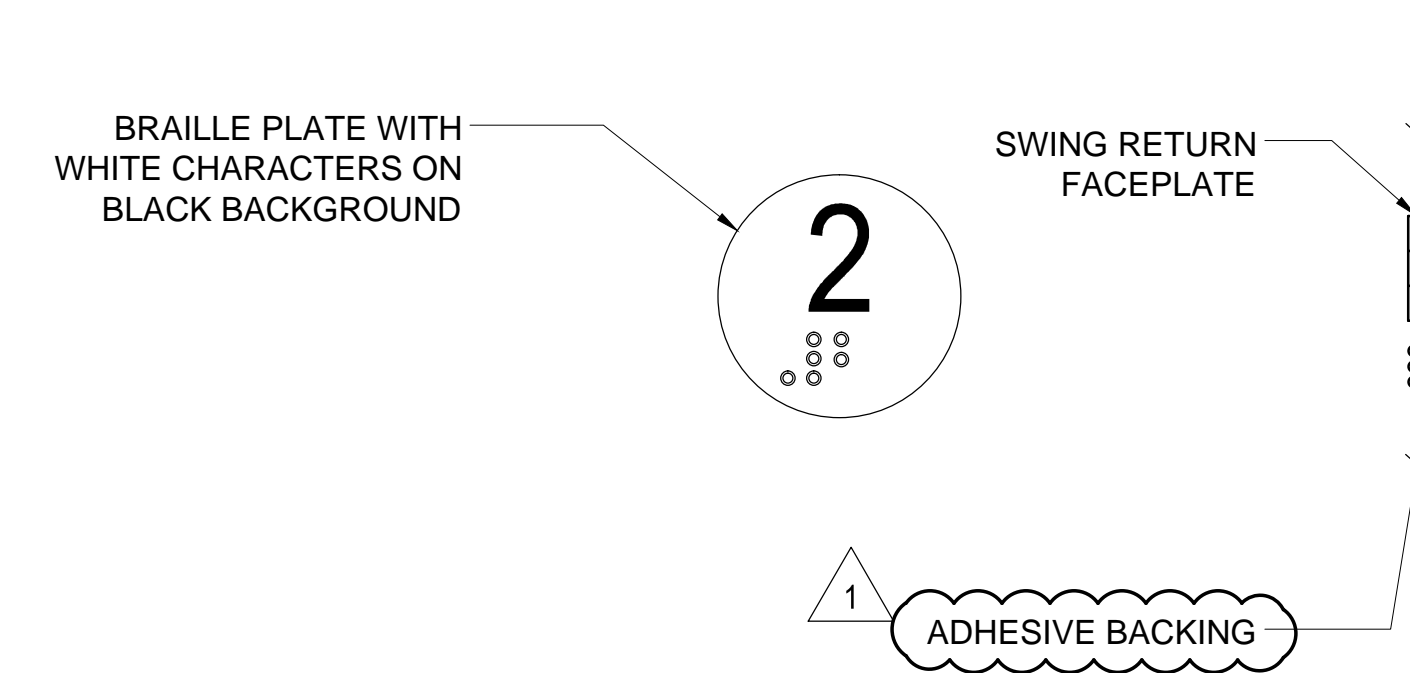
2 1/2" X 3 1/2" CAST PLATES WITH WHITE CHARACTERS ON BLACK BACKGROUND. MEETS ANSIA117.1 70% CONTRAST REQUIREMENTS. (ADHERED FROM BACK SIDE) INCLUDES ARABIC OR N.E.I.I. DESIGNATIONS AND BRAILLE. EGRESS LEVEL TO BE INDICATED WITH A 2" DIAMETER STAR TO THE LEFT OF THE CHARACTER PER CURRENT EDITION OF CBC.



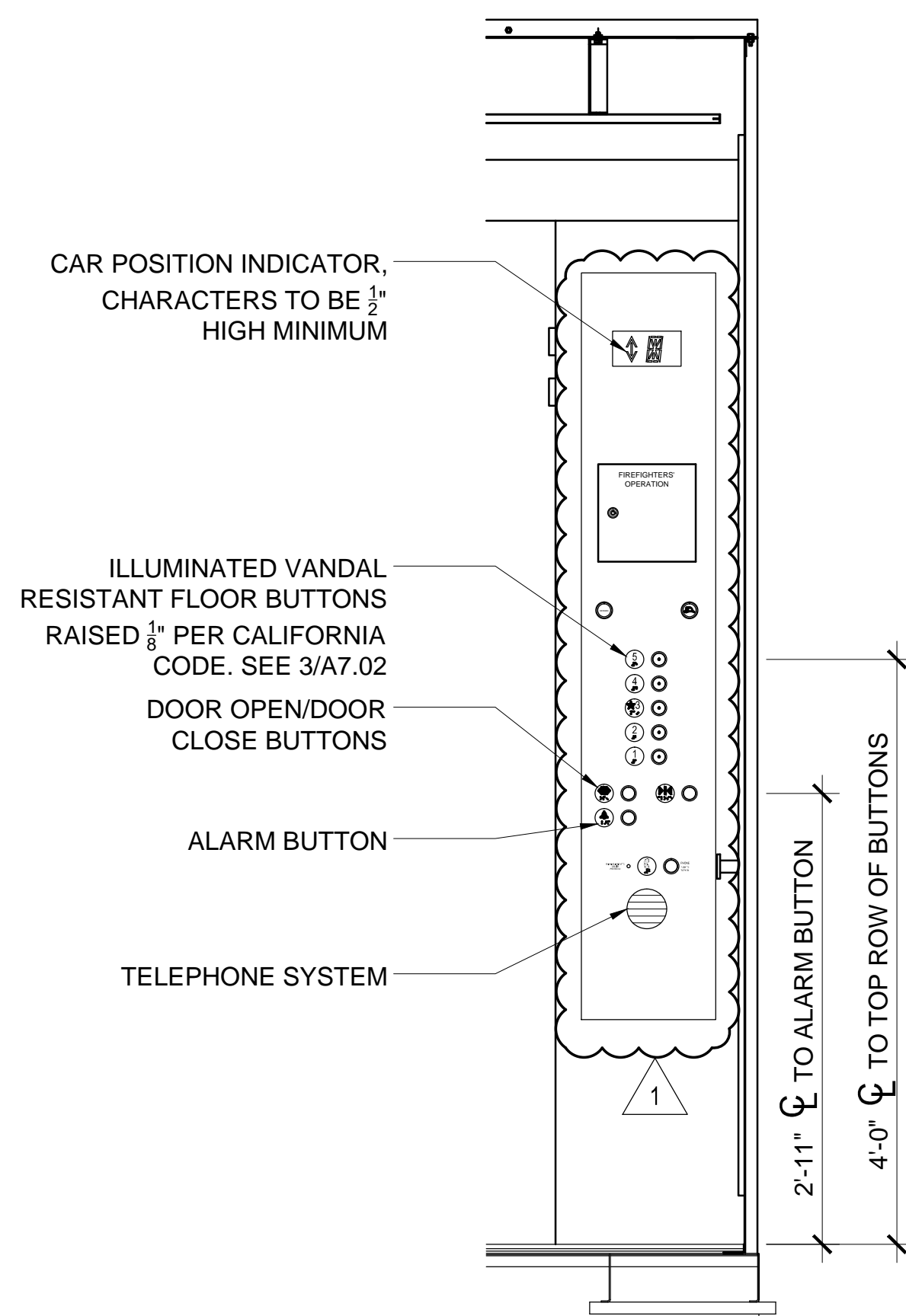
6 HALL BRAILLE DETAIL
 NTS

CAR BRAILLE PLATES

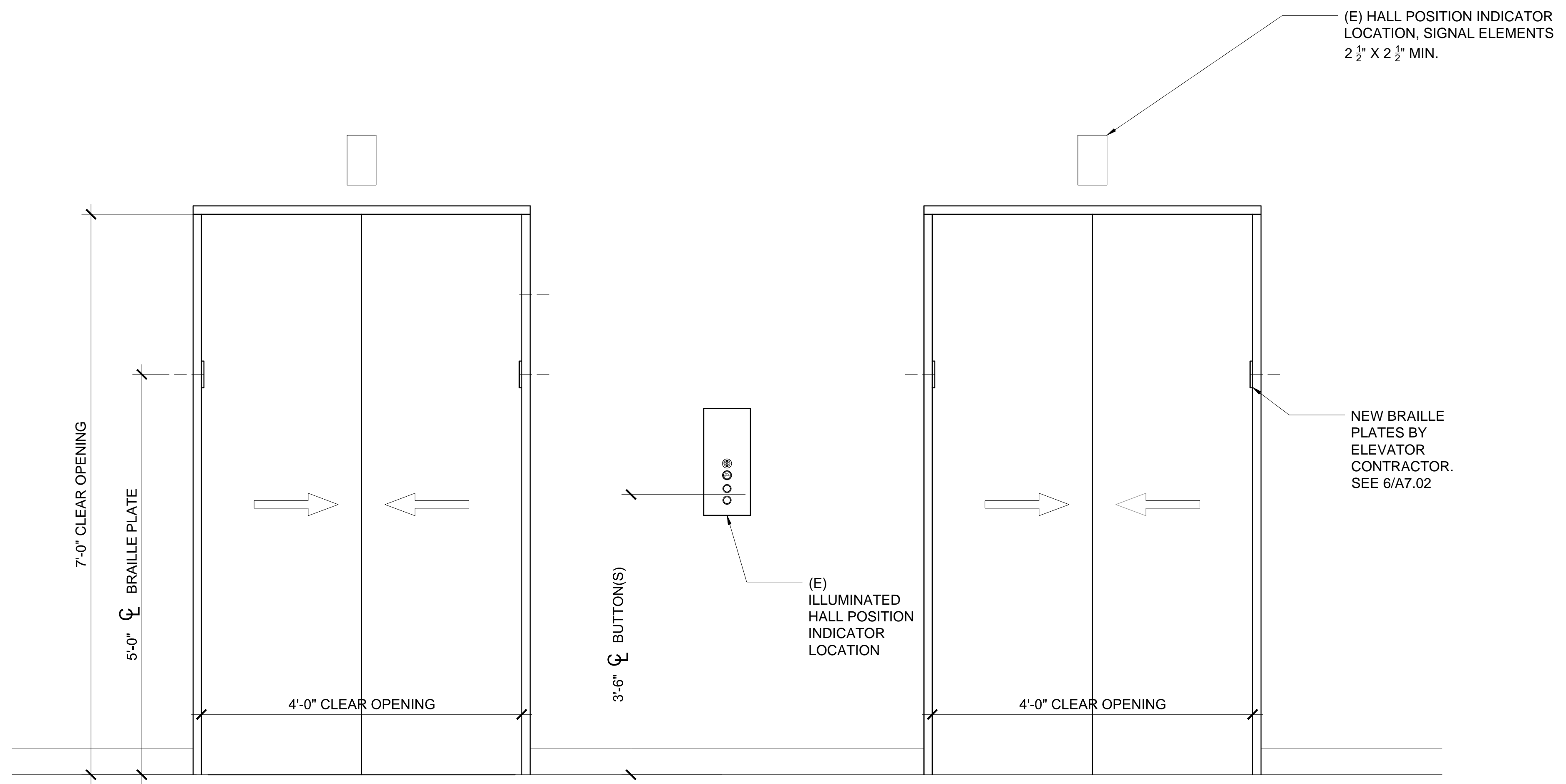
1 1/2" DIAMETER CAST PLATES WITH WHITE CHARACTERS ON BLACK BACKGROUND. MEETS ANSIA117.1 70% CONTRAST REQUIREMENTS. (ADHERED FROM BACK SIDE) INCLUDES ARABIC OR N.E.I.I. DESIGNATIONS AND BRAILLE. EGRESS LEVEL TO BE INDICATED WITH A STAR TO THE LEFT OF THE CHARACTER PER THE CURRENT EDITION OF CBC.



3 CAR BRAILLE DETAIL
 NTS



10 TYPICAL MAIN APPLIED RETURN
 1" = 1'-0"



7 TYPICAL HALL BUTTON AND BRAILLE PLATE LOCATIONS
 1" = 1'-0"

REV	DATE	DESCRIPTION
	06/16/2016	100% SD
	07/14/2016	100% DD
	08/18/2016	50% CD
	10/31/2016	90% CD
	12/12/2016	REVISED 90% CD
	04/03/2017	100% CD/CONFORMED SET
	04/24/2017	BID SET
	05/09/2017	ADDENDUM 1

PASADENA
 COURTHOUSE
 ELEVATOR MODERNIZATION
 300 E Walnut St, Pasadena, CA 91101



SIGNAGE DETAILS
 AS SHOWN

A7.02