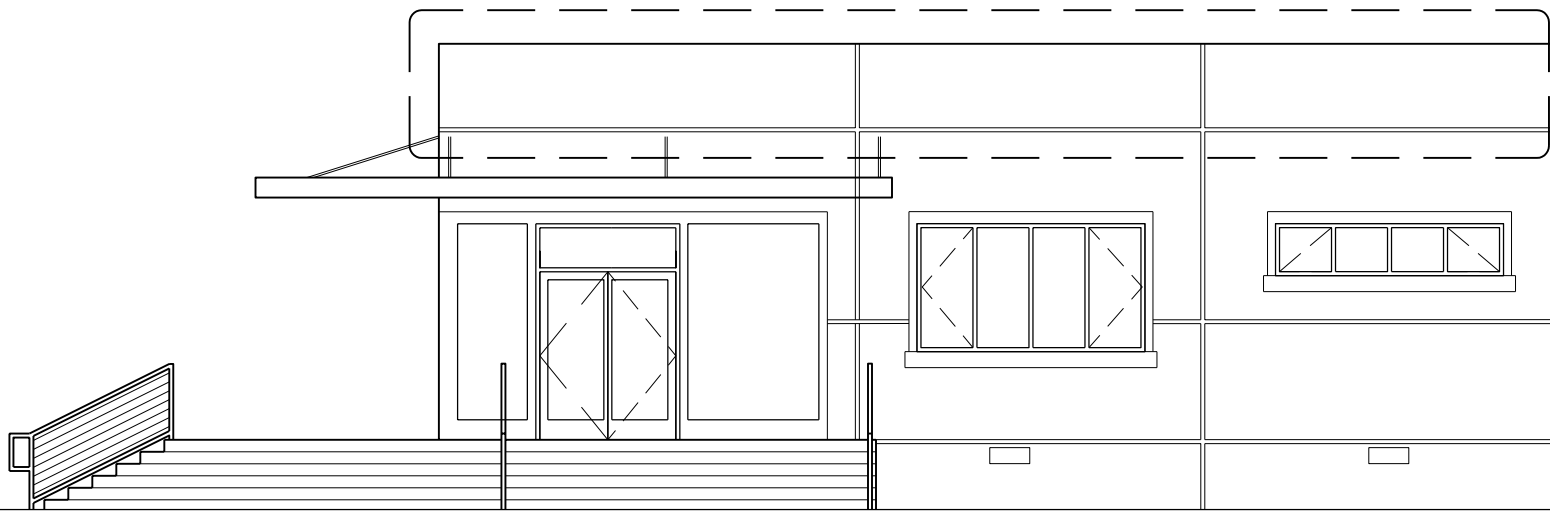


STAFF ENTRY PARTIAL ELEVATION

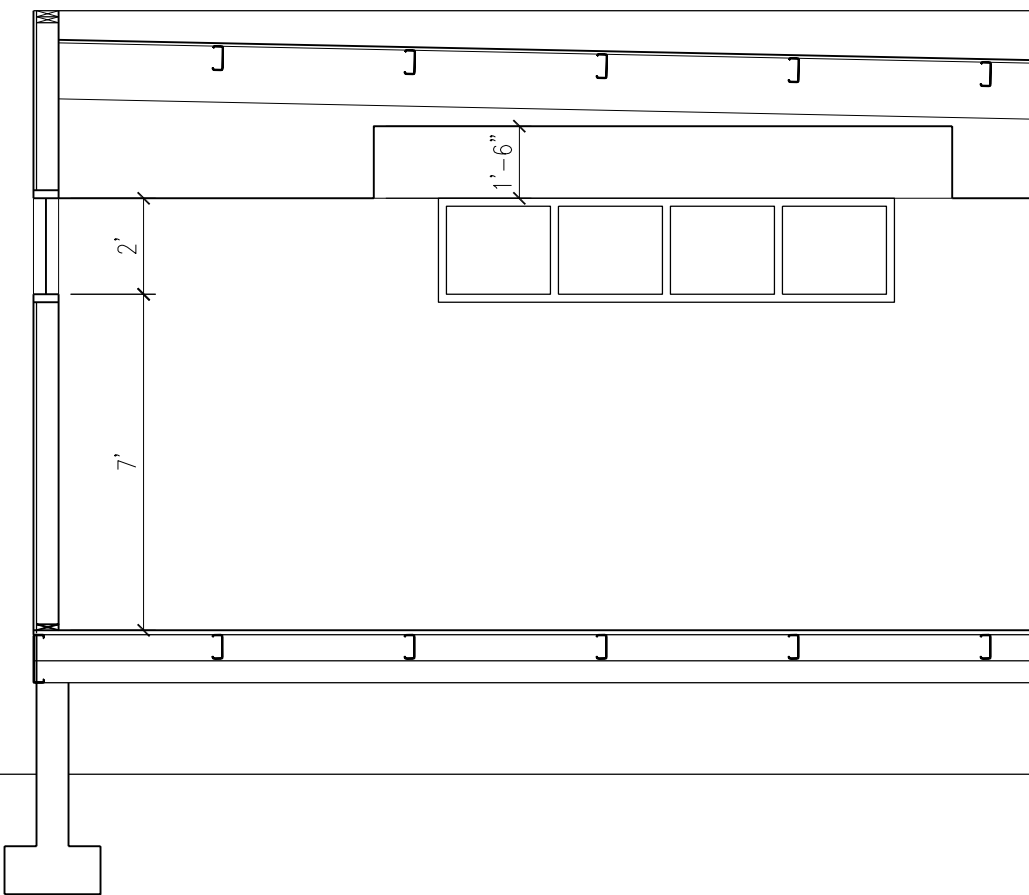
1/8" = 1'-0"



ADD ALT 1: 3' PARAPET  
TO SCREEN MECHANICAL  
UNITS

PUBLIC ENTRY PARTIAL ELEVATION

1/8" = 1'-0"

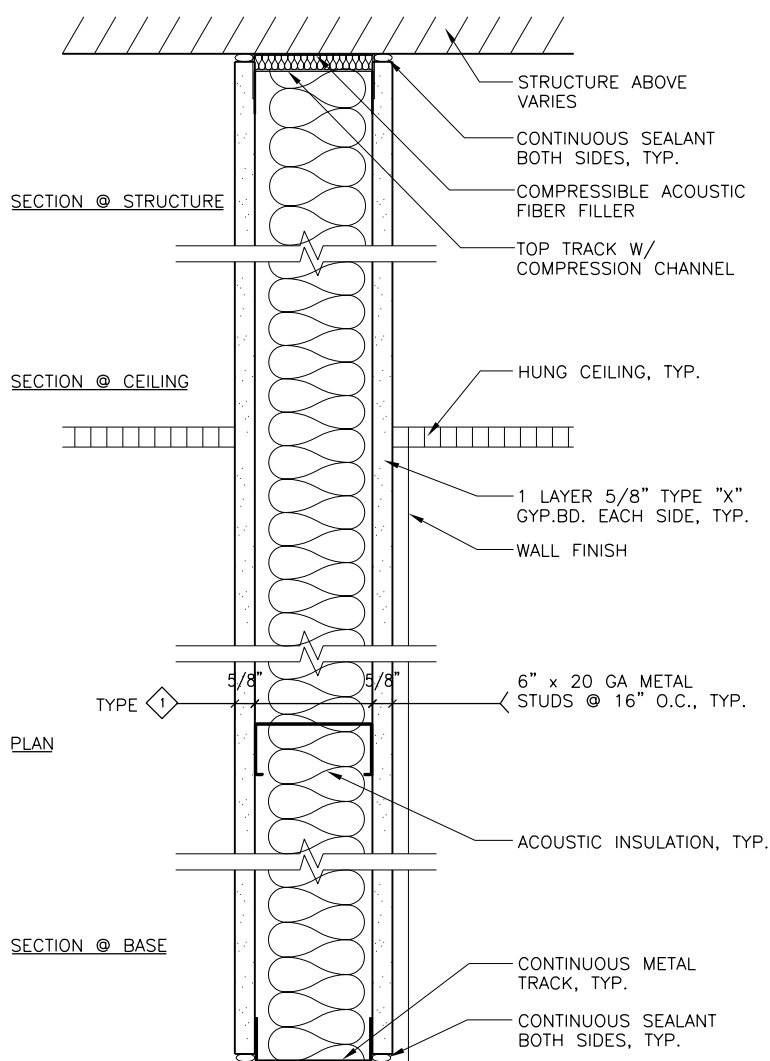


ADD ALT 2: HIGHER CEILING OVER WELL  
(SEE PLAN FOR AREA)

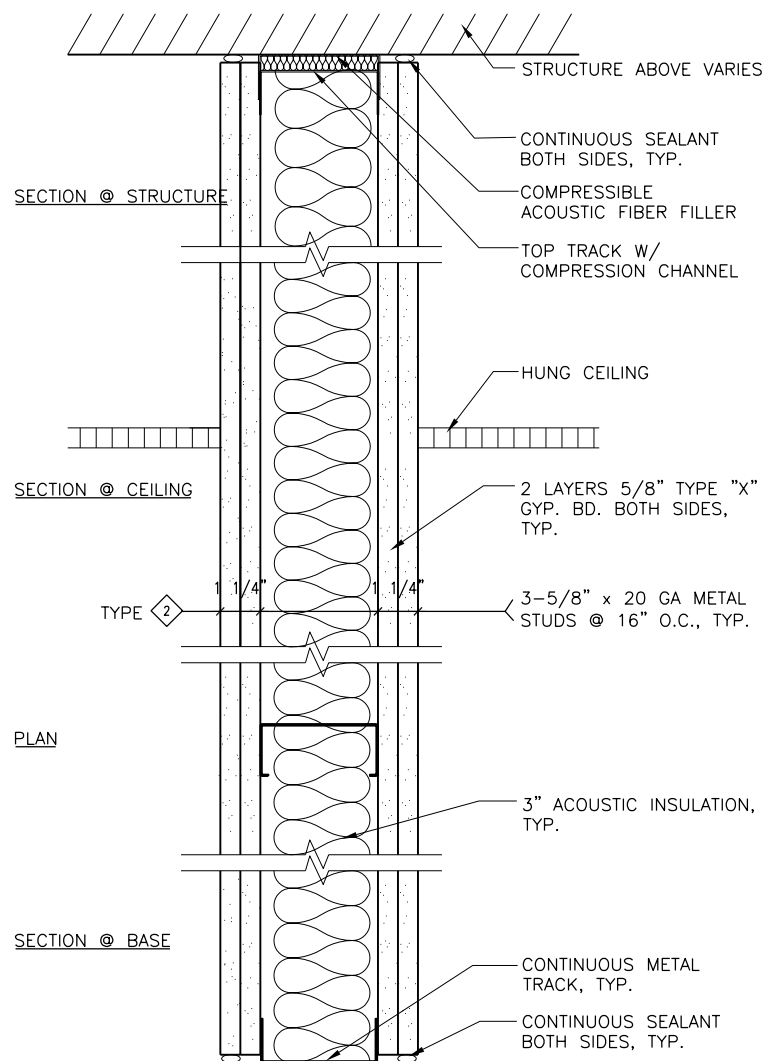
CLERESTORY WINDOWS (7' A.F.F. TO 9'  
A.F.F.) OCCUR IN COURTROOM AND JURY  
DELIBERATION/CONFERENCE ROOM. ALL  
OTHERS EXCEPT SIDELITES BY PUBLIC  
ENTRY ARE 3' A.F.F. TO 9' A.F.F.

SECTION THROUGH EXT. WALL

1/4" = 1'-0"



1 GYP. BD. PARTITION STC 44



2 GYP. BD. PARTITION 1-HR FIRE RATED STC 49

NOTE: "R" NEXT TO WALL SECTION SYMBOL ON PLAN INDICATES WALL MUST BE RATED.